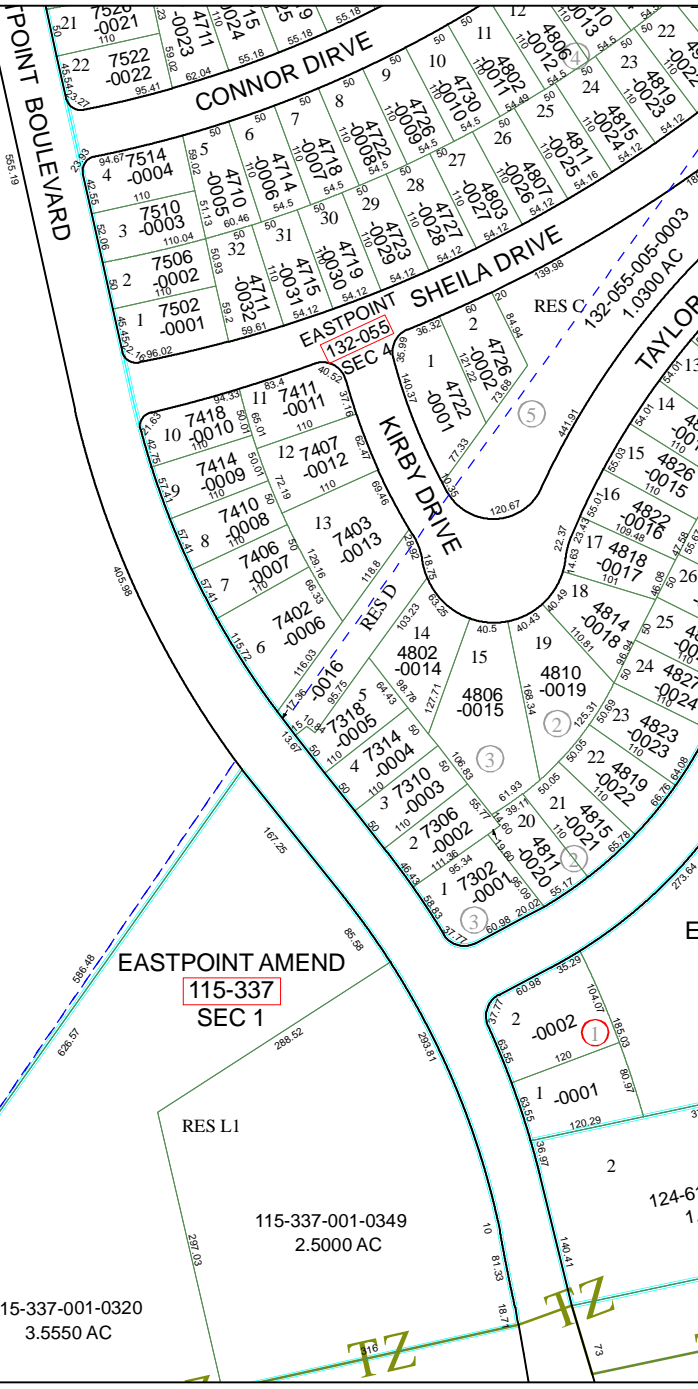


6360C6

RES G
RES G



EASTPOINT
115-337

115-337-001-0315
9.8780 AC

EASTPOINT AMEND
115-337
SEC 1

115-337-001-0349
2.5000 AC

115-337-001-0320
3.5550 AC

6359A2

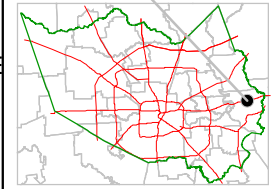
Harris County Appraisal District



0 100 200
PUBLICATION DATE:
10/1/2011

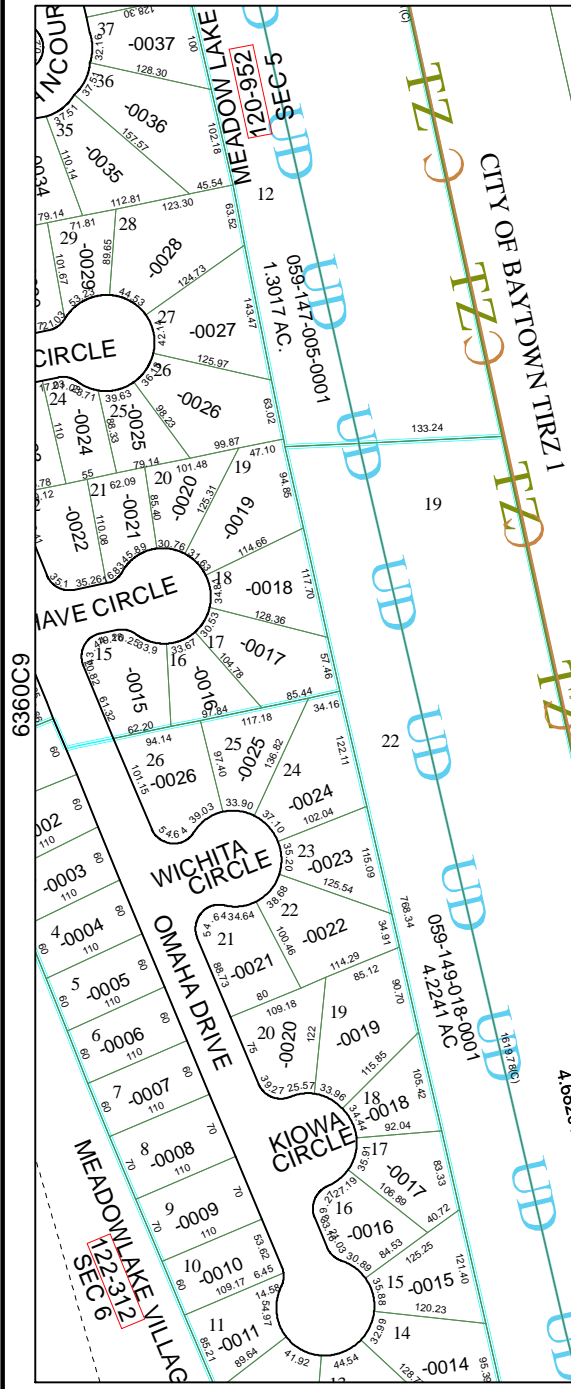
Geospatial or map data maintained by the Harris County Appraisal District is for informational purposes and may not be prepared for or be suitable for legal, engineering, or surveying purposes. It does not represent an on-the-ground survey and only represents the approximate location of property boundaries.

MAP LOCATION



FACET 6360C

1	2	3	4
5	6	7	8
9	10	11	12



122-23-12

3.17 AC

6360C3

6360C11

