

Harris County Appraisal District

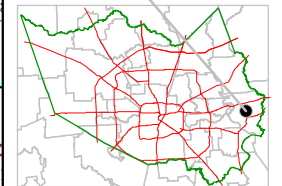


0 100 200

PUBLICATION DATE:
8/15/2011

Geospatial or map data maintained by the Harris County Appraisal District is for informational purposes and may not be suitable for legal, engineering, or surveying purposes. It does not represent an on-the-ground survey and only represents the approximate location of property boundaries.

MAP LOCATION

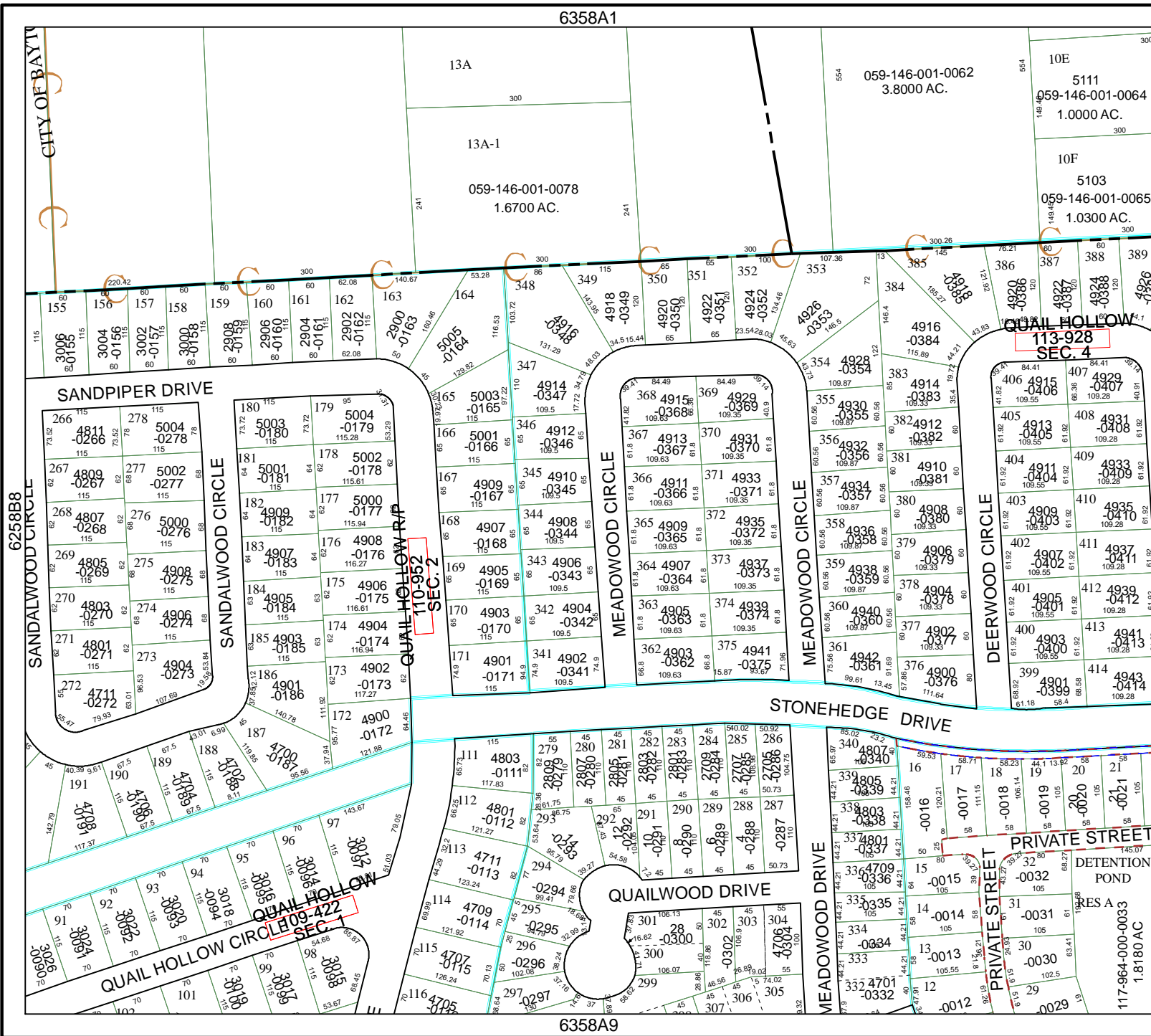


FACET 6358A

1	2	3	4
5	6	7	8
9	10	11	12

6358A1

6358A9



6358A6

117-964-000-0033
1.8180 AC

QUAIL HOLLOW
113-928
SEC. 4

QUAIL HOLLOW R/P
110-952
SEC. 2

QUAIL HOLLOW
09-422
SEC. 1

CITY OF BAYL

6258B8

059-146-001-0062
3.8000 AC.

10E
5111
059-146-001-0064
1.0000 AC.

10F
5103
059-146-001-0065
1.0300 AC.

13A
300
13A-1
059-146-001-0078
1.6700 AC.

SANDPIPER DRIVE

SANDALWOOD CIRCLE

QUAIL HOLLOW R/P

MEADOWOOD CIRCLE

STONEHEDGE DRIVE

QUAILWOOD DRIVE

MEADOWOOD DRIVE

PRIVATE STREET

DETENTION POND

RES A