

6267A6

CROSBY EASIGATE ROAD

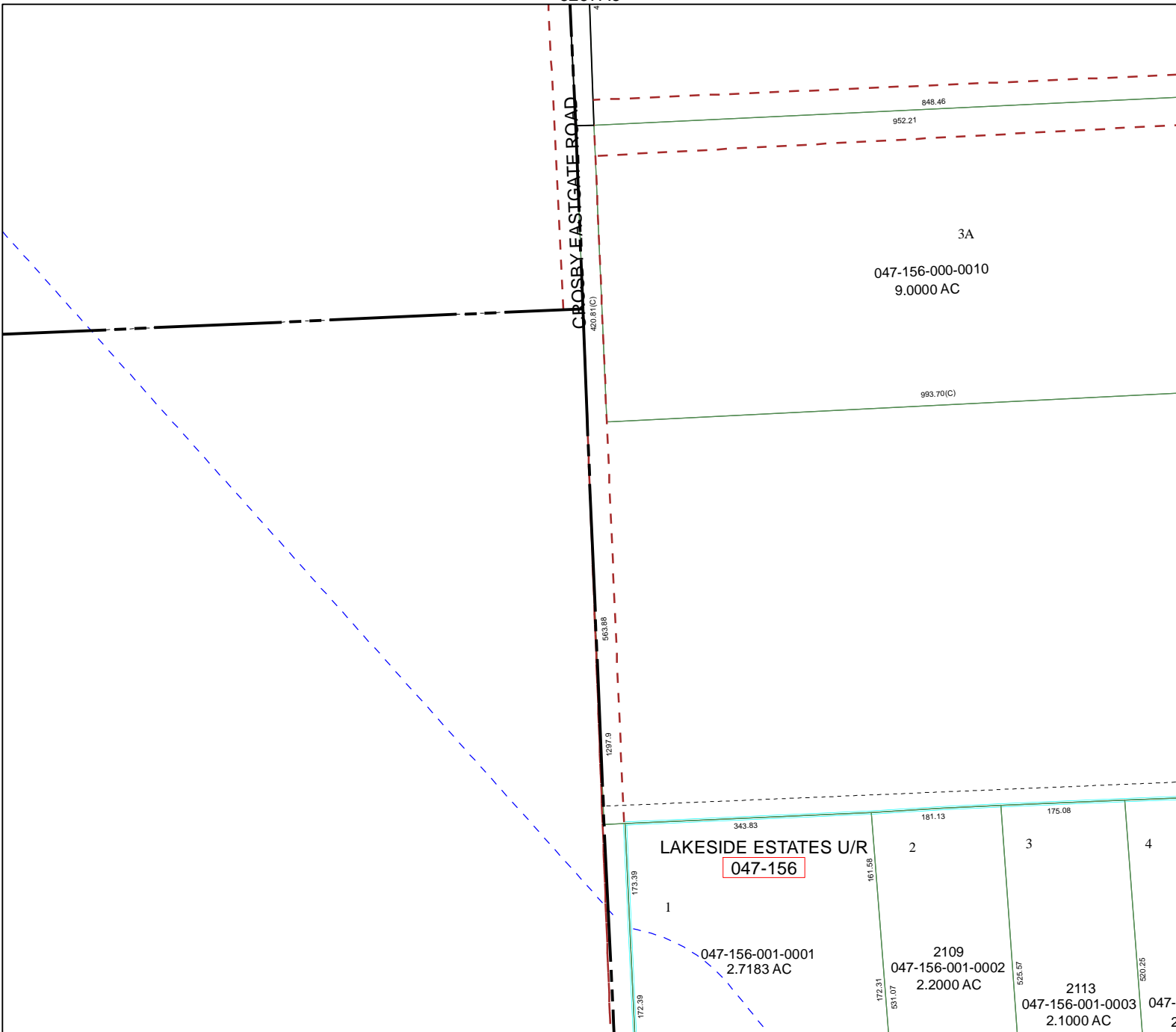
420.81(C)

563.88

1297.9

6267C2

6267A9



Harris County Appraisal District

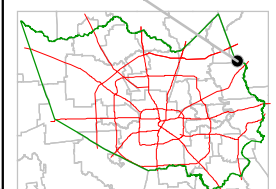


0 100 200
PUBLICATION DATE:
 11/30/2011

Geospatial or map data maintained by the Harris County Appraisal District is for informational purposes and may **not** have been prepared for or be suitable for legal, engineering, or surveying purposes. It does **not** represent an on-the-ground survey and only represents the approximate location of property boundaries.



MAP LOCATION



FACET 6267A

1	2	3	4
5	6	7	8
9	10	11	12

6267A11