

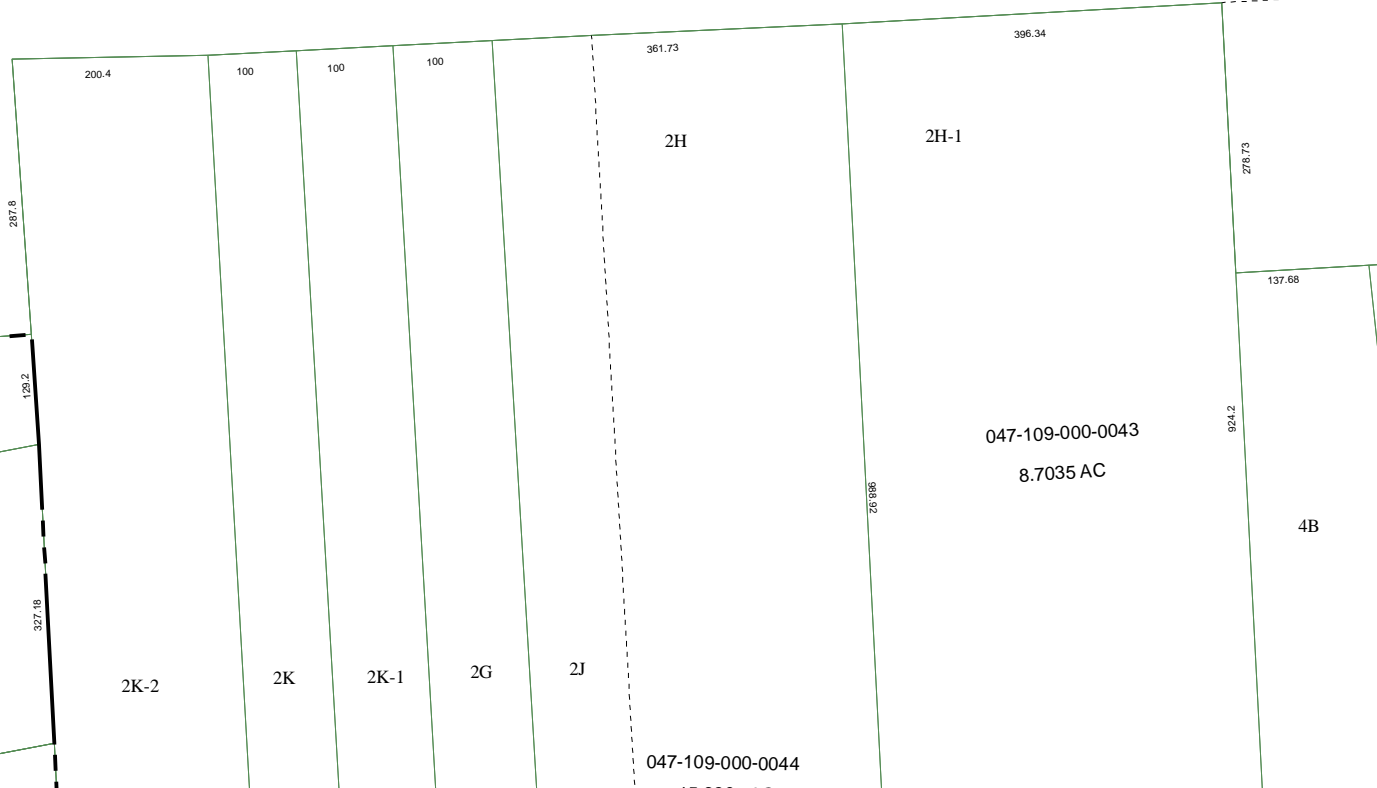
6266A3

2

047-109-000-0030
59.5500 AC

19900
047-109-000-0032
1.0000 AC

6266A6



6266A11

Harris County Appraisal District

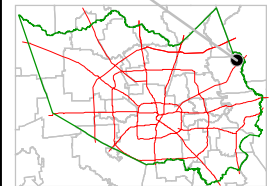


0 100 200
PUBLICATION DATE:
8/3/2011

Geospatial or map data maintained by the Harris County Appraisal District is for informational purposes and may **not** have been prepared for or be suitable for legal, engineering, or surveying purposes. It does **not** represent an on-the-ground survey and only represents the approximate location of property boundaries.



MAP LOCATION



FACET 6266A

1	2	3	4
5	6	7	8
9	10	11	12

6266A8