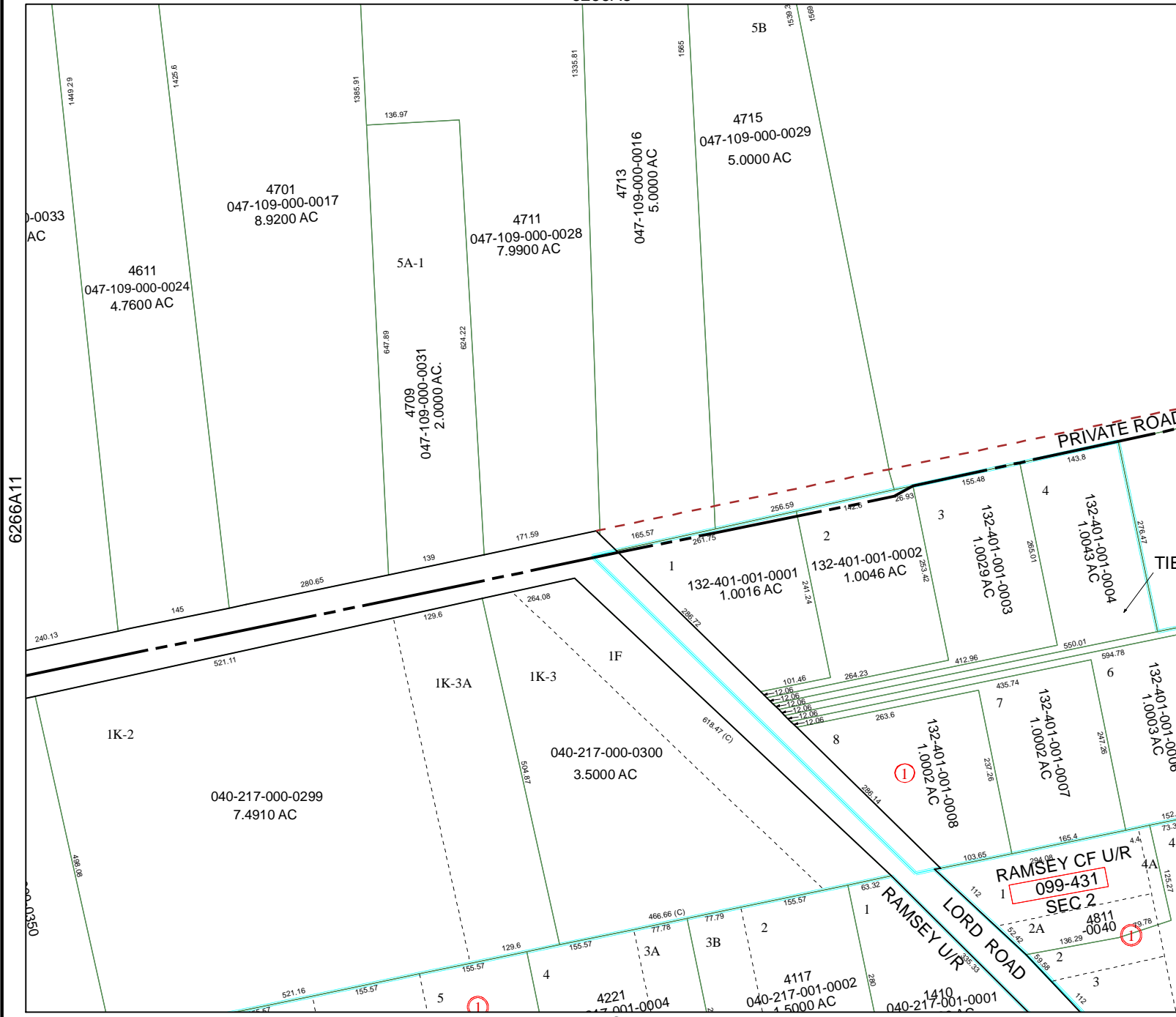


6266A8



Harris County Appraisal District

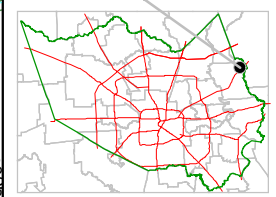


0 100 200
 PUBLICATION DATE:
 2/9/2012

Geospatial or map data maintained by the Harris County Appraisal District is for informational purposes and may not have been prepared for or be suitable for legal, engineering, or surveying purposes. It does not represent an on-the-ground survey and only represents the approximate location of property boundaries.



MAP LOCATION



FACET 6266A

1	2	3	4
5	6	7	8
9	10	11	12

6266A11

6266B

6266C4

RAMSEY CF U/R
 099-431
 SEC. 2

RAMSEY U/R
 LORD ROAD

4811-0040