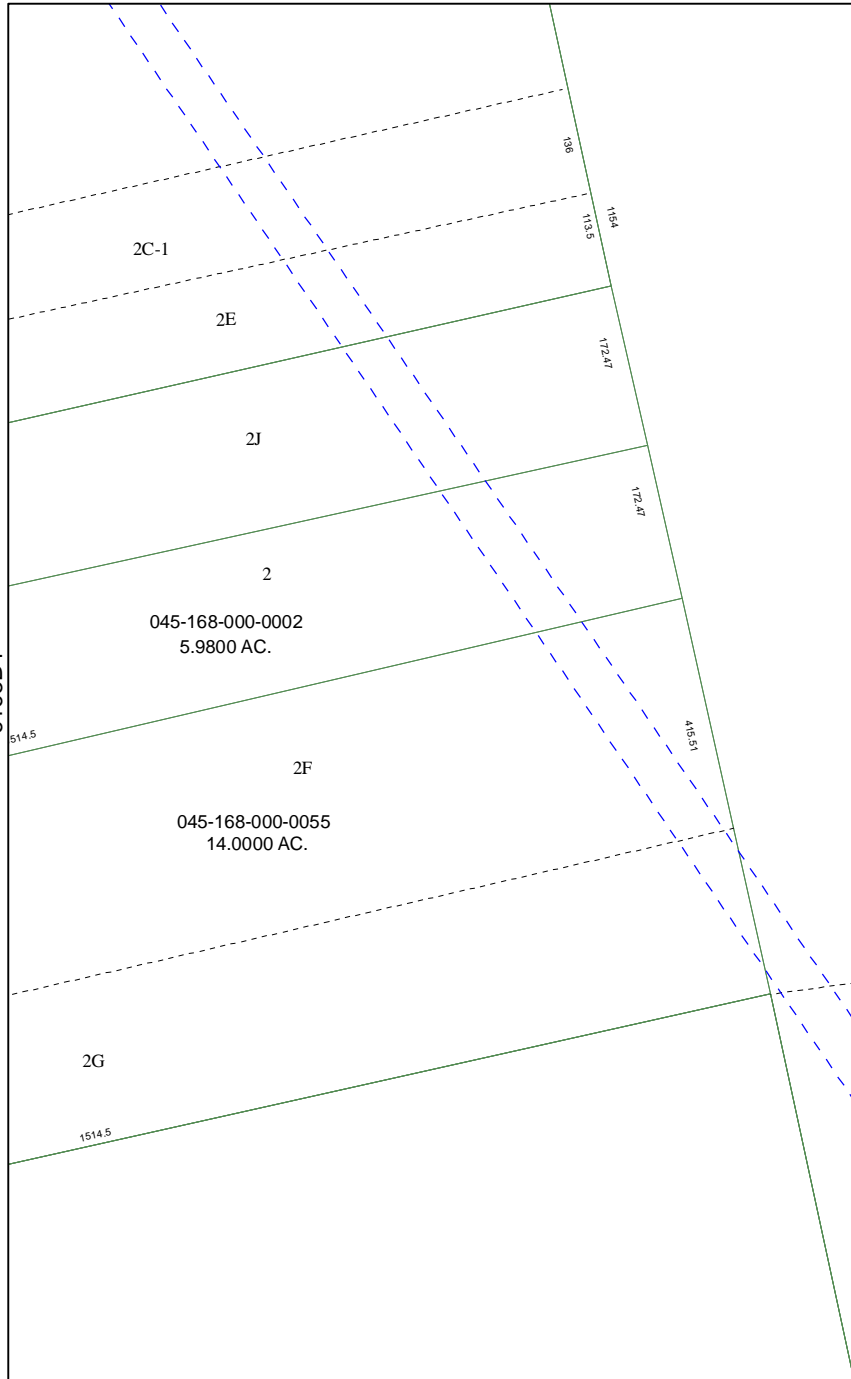


6266C9

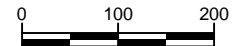
14

6165B4



6265A5

Harris County Appraisal District

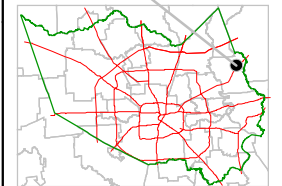


PUBLICATION DATE:
8/15/2011

Geospatial or map data maintained by the Harris County Appraisal District is for informational purposes and may **not** have been prepared for or be suitable for legal, engineering, or surveying purposes. It does **not** represent an on-the-ground survey and only represents the approximate location of property boundaries.



MAP LOCATION



FACET 6265A

1	2	3	4
5	6	7	8
9	10	11	12

6265A2