

6260A6

8713
059-137-000-0360
2.5000 AC.

85

COTTON FARMS A
9-137

2025
059-137-000-0613
3.7618 AC

2027
059-137-000-0094
5.7700 AC

827
-000-0086
000 AC
7-000-0606
479 AC

85E
8711
059-137-000-0599
1.0000 AC.

85F
8603
059-137-000-0600
1.0000 AC.

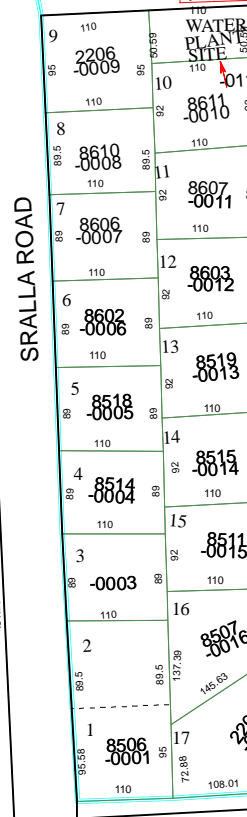
85G

85
2122
059-137-000-0085
4.0671 AC

SRALLA ROAD

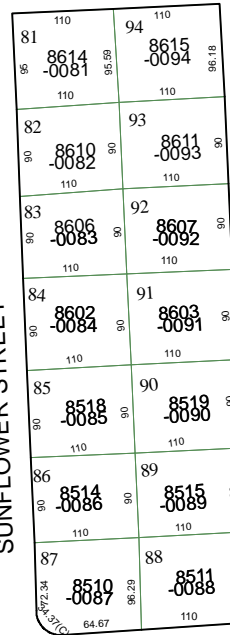
COUNTRY TERRACE
113-158

GOLDENRO



SUNFLOWER STREET

BLUEBONNET STREET



Harris County Appraisal District

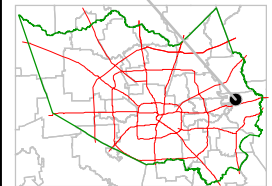


0 100 200

PUBLICATION DATE:
10/1/2011

Geospatial or map data maintained by the Harris County Appraisal District is for informational purposes and may not be prepared for or be suitable for legal, engineering, or surveying purposes. It does not represent an on-the-ground survey and only represents the approximate location of property boundaries.

MAP LOCATION



FACET 6260A

1	2	3	4
5	6	7	8
9	10	11	12

6260C2

EAST WALLISVILLE ROAD

15 14A 14B 14 13

12C 12E 11C 11D 11E 10D 10E 10C

D179 10-0180 130 10-0182

6260A9

86

1377

1377

1280.35

370

370

150.88

151.9

150.85

130

119

191.72

500

225.11

156.33

156.53

150

150

374.93

108.01

129.94

83.04

20.93

88

20

88

374.93

110

2306

89.5

89.5

137.29

146.83

80.03

117.14

4.14

88

19

88

20

88

2306

110

2306

88

2306

110

2306

88

2306

110

2306

88

2306

110

2306

88

2306

110

2306

88

2306

110

2306

88

2306

110

2306

88

2306

23K

23G

23F

23E

23D

950

170

170

170

170

170

170

170

170

170

170

170

170

170

170

170

100

100

100

100

100

100

100

100

100

100

100

100

100

100

100

100

100

100

100

100

100

80

79

78

77

76

75

74

85

85

85

85

85

85

85

85

85

85

85

85

85

85

110

110

110

110

110

110

110

110

110

110

110

110

110

110

110

110

110

110

110

110

110

90.59

110

85

85

85

85

85

85

85

85

85

85

85

85

85

85

85

85

85

85

85

110

110

110

110

110

110

110

110

110

110

110

110

110

110

110

110

110

110

110

110

110

95

95

95

95

95

95

95

95

95

95

95

95

95

95

95

95

95

95

95

95

95

110

110

110

110

110

110

110

110

110

110

110

110

110

110

110

110

110

110

110

110

110

89.5

89.5

89.5

89.5

89.5

89.5

89.5

89.5

89.5

89.5

89.5

89.5

89.5

89.5

89.5

89.5

89.5

89.5

89.5

89.5

89.5

110

110

110

110

110

110

110

110

110

110

110

110

110

110

110

110

110

110

110

110

110

88

88