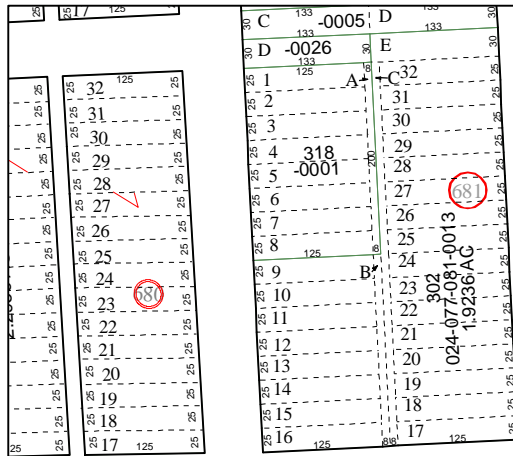
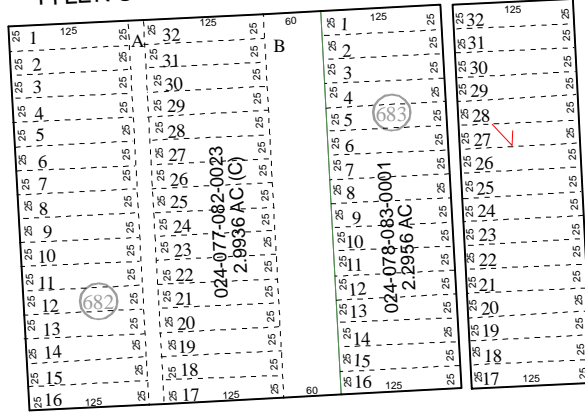


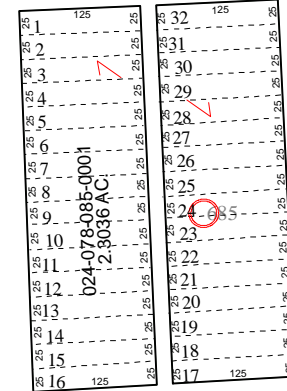
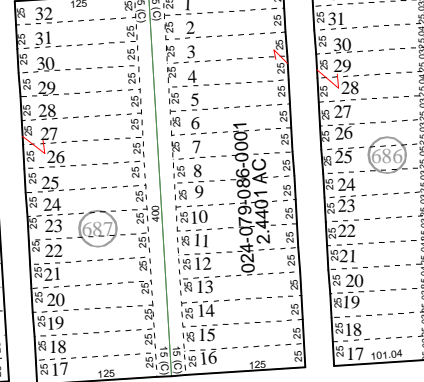
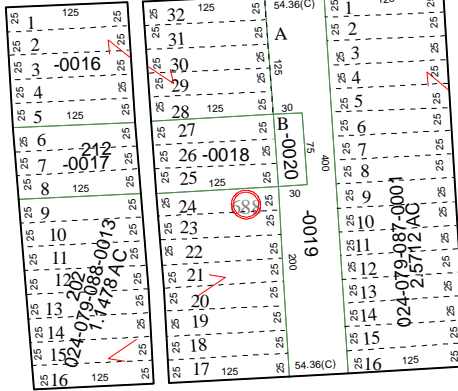
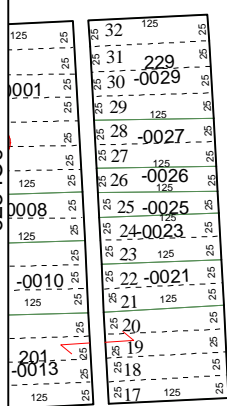
6254C6



TYLER STREET

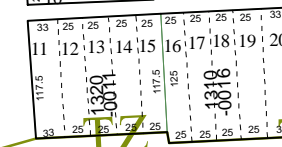
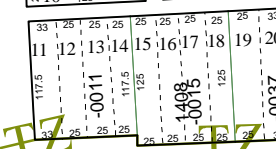
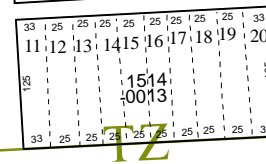
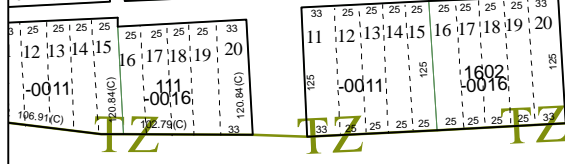
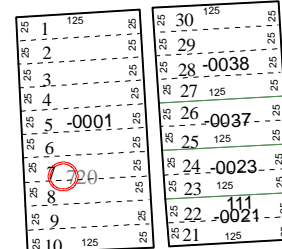
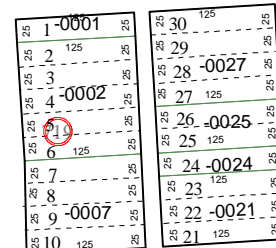
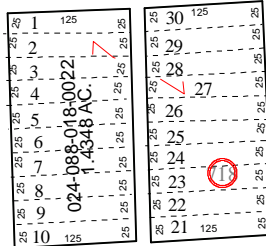
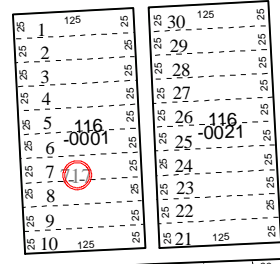
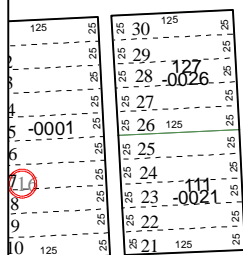


ADAMS STREET



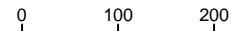
6254C11

WEST POLK STREET



6253A2

Harris County Appraisal District

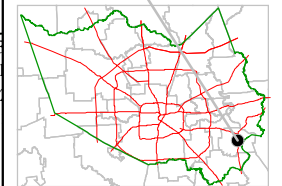


PUBLICATION DATE: 10/1/2011

Geospatial or map data maintained by the Harris County Appraisal District is for informational purposes and may not be prepared for or be suitable for legal, engineering, or surveying purposes. It does not represent an on-the-ground survey and only represents the approximate location of property boundaries.



MAP LOCATION



FACET 6254C

1	2	3	4
5	6	7	8
9	10	11	12