

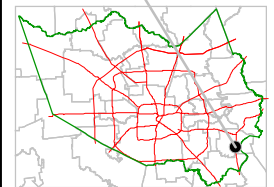
Harris County Appraisal District



0 100 200
PUBLICATION DATE:
 2/7/2012

Geospatial or map data maintained by the Harris County Appraisal District is for informational purposes and may **not** have been prepared for or be suitable for legal, engineering, or surveying purposes. It does **not** represent an on-the-ground survey and only represents the approximate location of property boundaries.

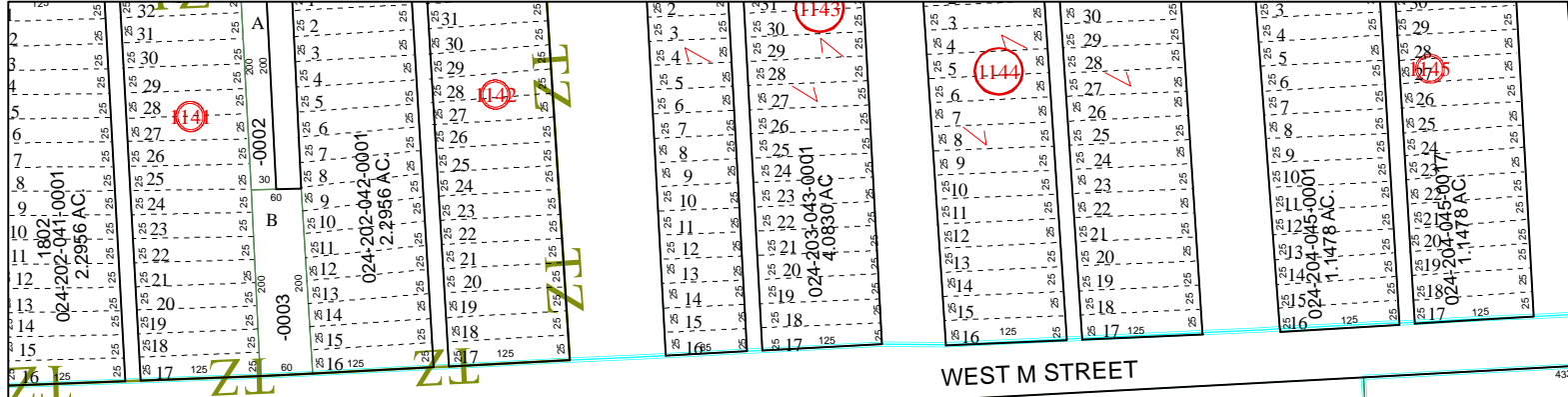
MAP LOCATION



FACET 6253C

1	2	3	4
5	6	7	8
9	10	11	12

6253C2



6253C5



6253C10

WEST M STREET

WEST N STREET

PORT CROSSIN

1B-3

RES M

040-278-001-0025
5.4362 AC

040-278-001-0029
12.6324 AC

040-278-001-0023
1.5862 AC.

040-278-001-0038
1.5862 AC.

040-278-001-0006
1.9060 AC.

129-217-7.34

129-217

120-310