

6253C11

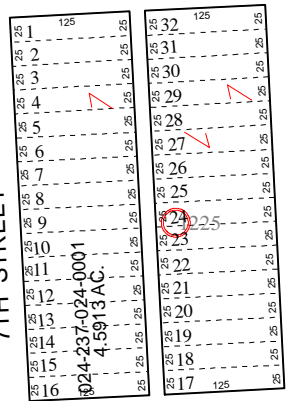
467.73

IA

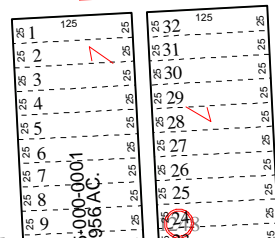
040-278-001-0032
3.3960 AC.

988.28(C)

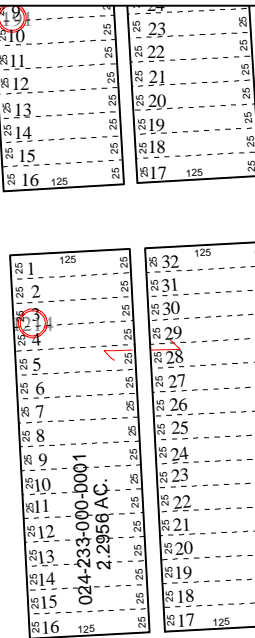
7TH STREET



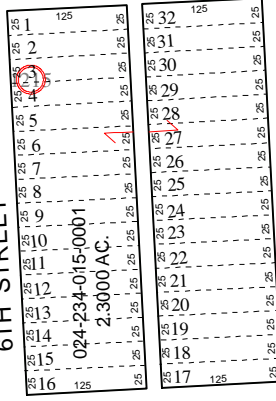
LA PORTE
023-149



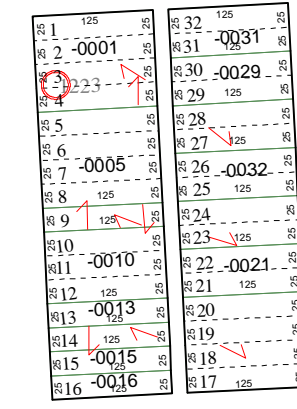
WEST P STREET



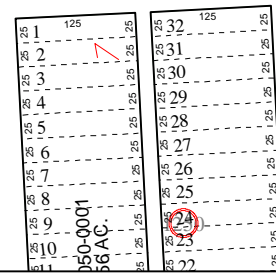
6TH STREET



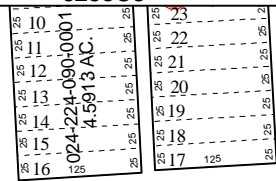
WEST Q STREET



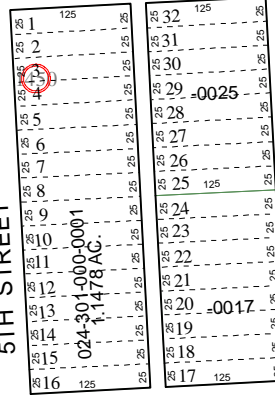
WEST R STREET



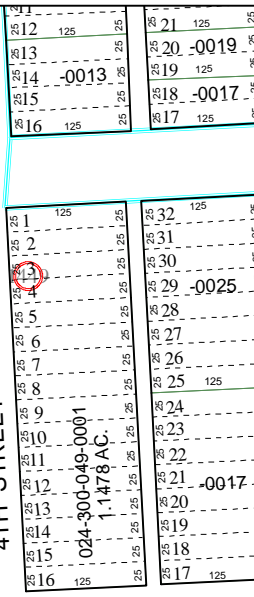
6253C8



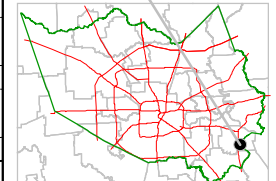
5TH STREET



4TH STREET



6253D9



FACET
6253C

1	2	3	4
5	6	7	8
9	10	11	12

Harris County Appraisal District



0 100 200
PUBLICATION DATE:
8/15/2011

Geospatial or map data maintained by the Harris County Appraisal District is for informational purposes and may not have been prepared for or be suitable for legal, engineering, or surveying purposes. It does not represent an on-the-ground survey and only represents the approximate location of property boundaries.

MAP LOCATION

