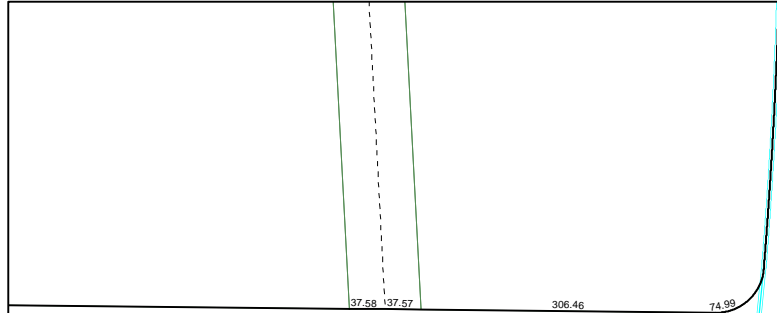


6252A3



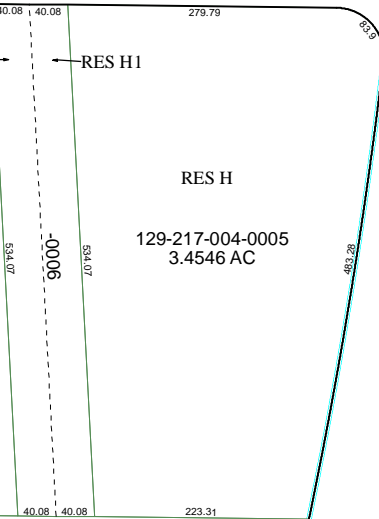
RTON WEEMS BOULEVARD

RES G1

RES H1

RES H

129-217-004-0005
3.4546 AC



6252A6

PORT CROSSING
129-217

003

WY. 146

6252A11

Harris County Appraisal District



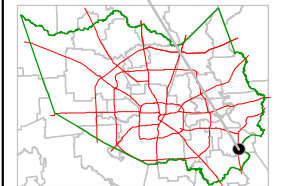
0 100 200

PUBLICATION DATE:
9/21/2011

Geospatial or map data maintained by the Harris County Appraisal District is for informational purposes and may not have been prepared for or be suitable for legal, engineering, or surveying purposes. It does not represent an on-the-ground survey and only represents the approximate location of property boundaries.



MAP LOCATION



FACET 6252A

1	2	3	4
5	6	7	8
9	10	11	12

