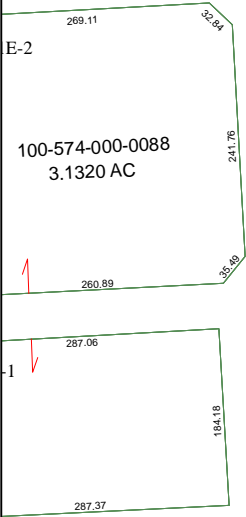


6251D2

9



100-574-000-0072
54.1512 AC

549.80

480.13

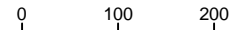
6251D5

3283.76(C)

2087.03

6251D10

Harris County Appraisal District

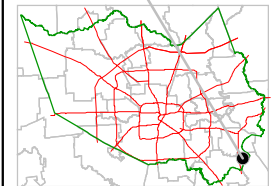


PUBLICATION DATE:
10/6/2011

Geospatial or map data maintained by the Harris County Appraisal District is for informational purposes and may **not** have been prepared for or be suitable for legal, engineering, or surveying purposes. It does **not** represent an on-the-ground survey and only represents the approximate location of property boundaries.



MAP LOCATION



FACET 6251D

1	2	3	4
5	6	7	8
9	10	11	12

6251D7