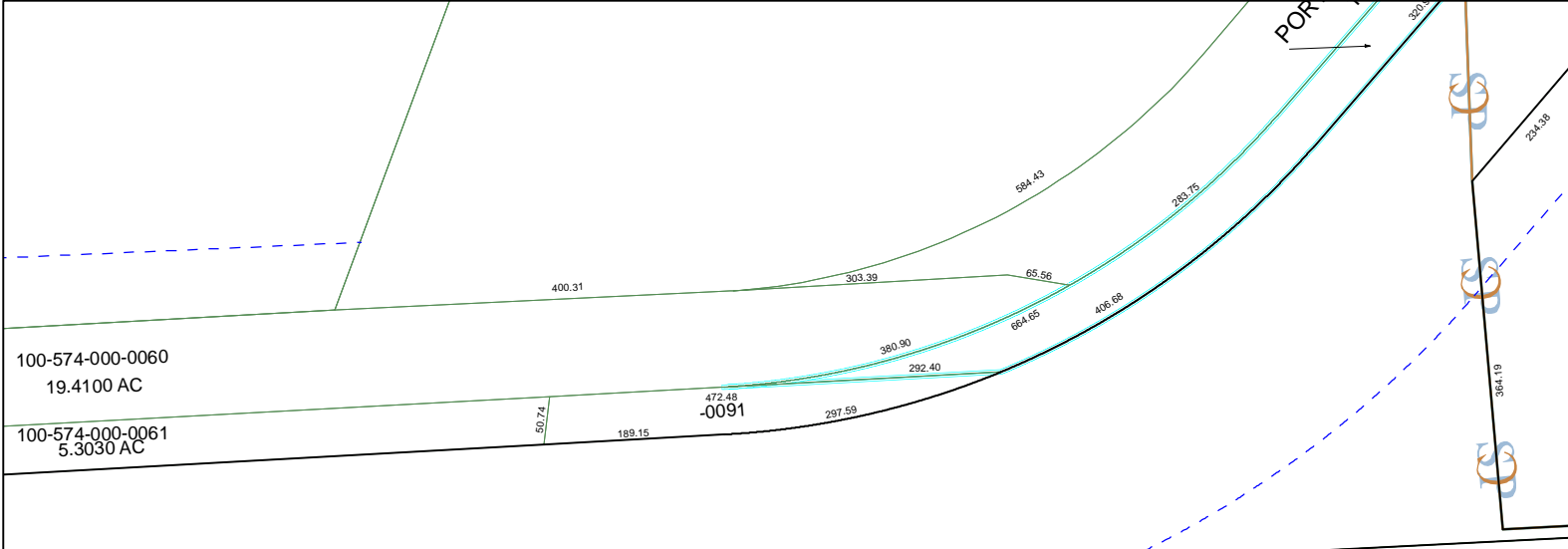


6251B10

POR

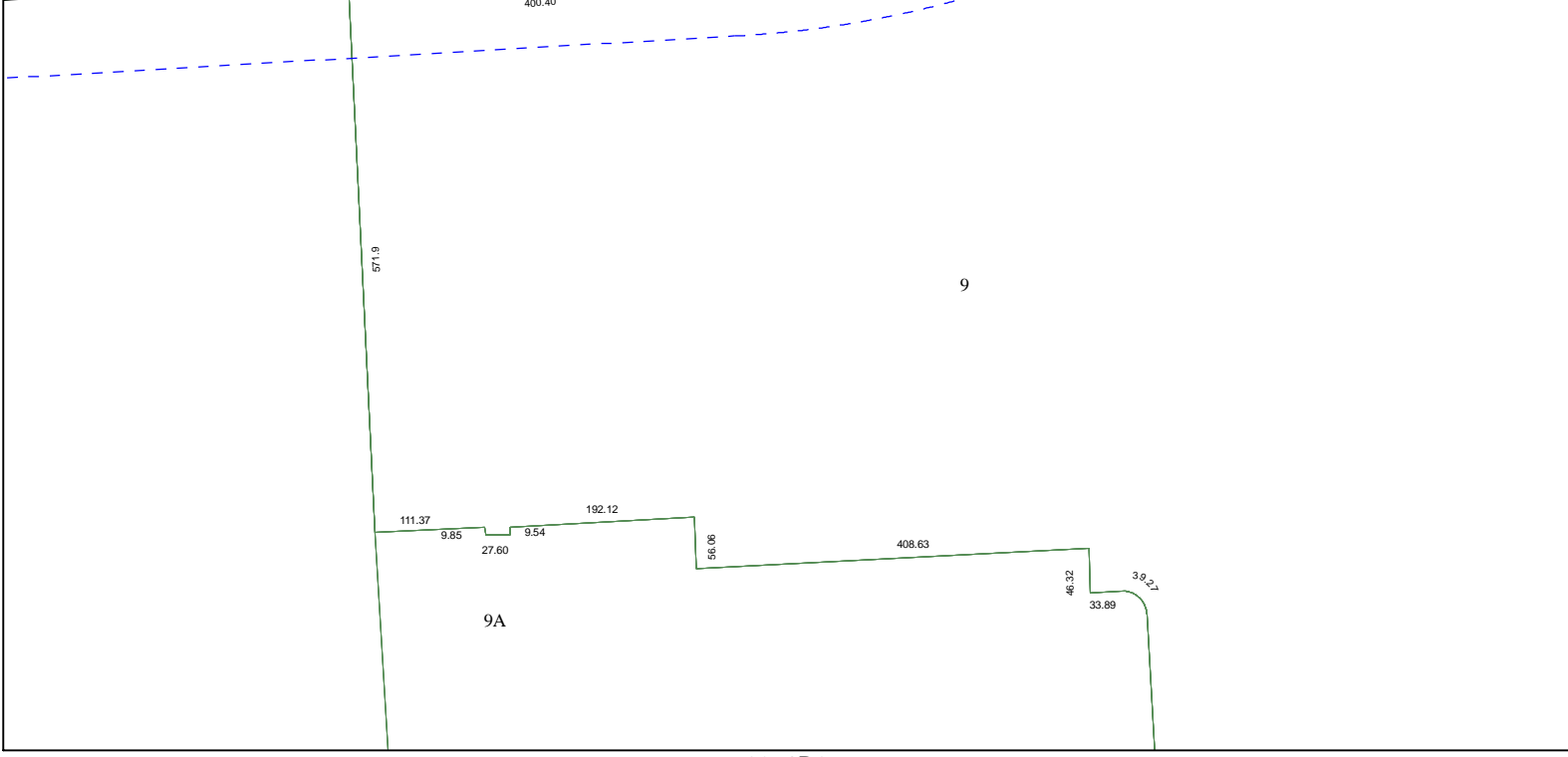


100-574-000-0060  
19.4100 AC

100-574-000-0061  
5.3030 AC



6251D1



6251D6

# Harris County Appraisal District

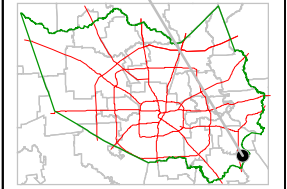


PUBLICATION DATE:  
10/6/2011

Geospatial or map data maintained by the Harris County Appraisal District is for informational purposes and may **not** have been prepared for or be suitable for legal, engineering, or surveying purposes. It does **not** represent an on-the-ground survey and only represents the approximate location of property boundaries.



### MAP LOCATION



# FACET 6251D

1	2	3	4
5	6	7	8
9	10	11	12

6251D3