

6252C11

BAYOU FOREST DRIVE SOUTH

CITY OF SHOREACRES

RES A
125-959-001-0018
1.0300 AC

058-068-048-0001
1.2747 AC

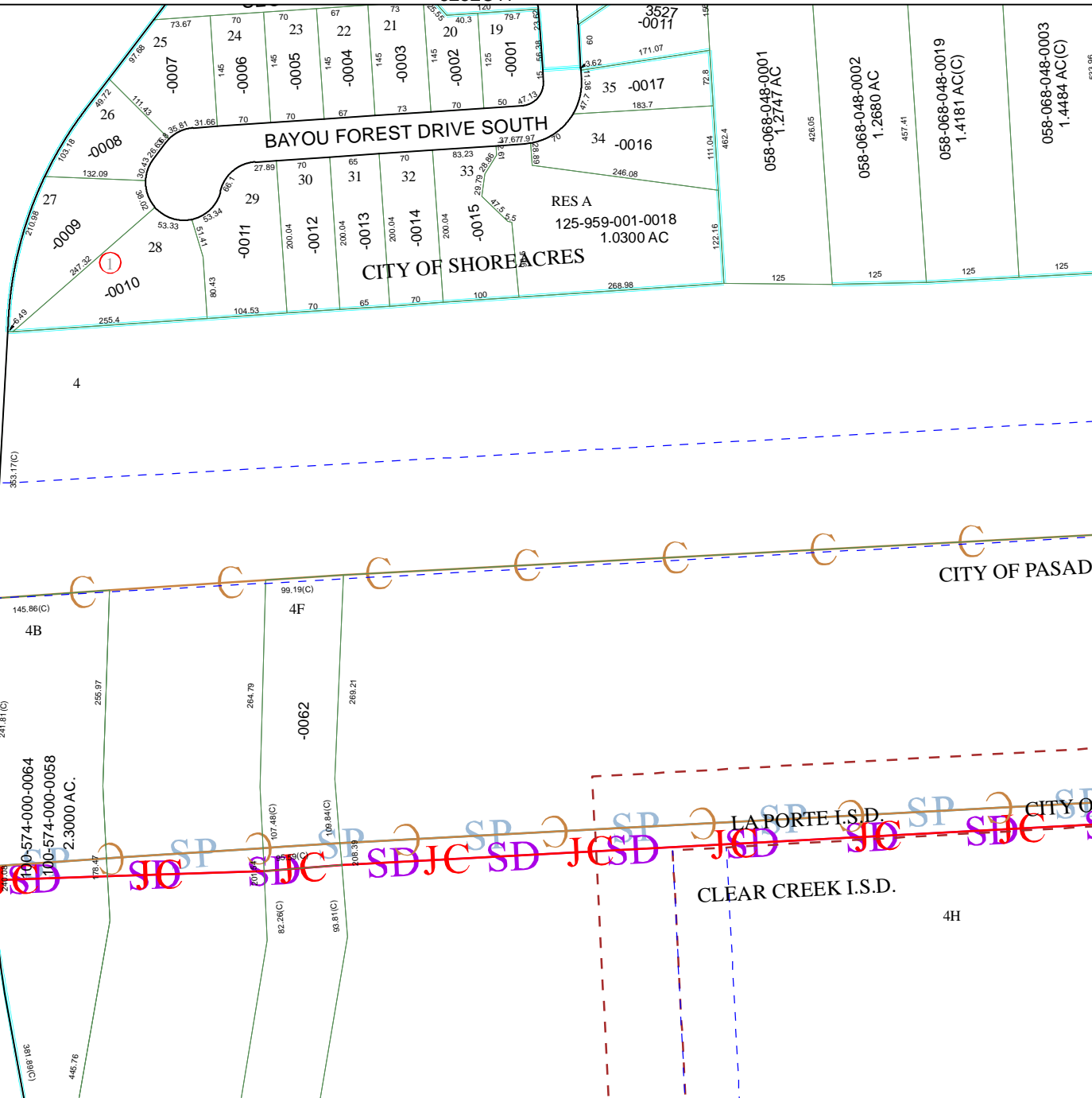
058-068-048-0002
1.2680 AC

058-068-048-0019
1.4181 AC(C)

058-068-048-0003
1.4484 AC(C)

533.96

6251A2



CITY OF PASADENA

6251A4

LAPORTE I.S.D.

CLEAR CREEK I.S.D.

4H

Harris County Appraisal District

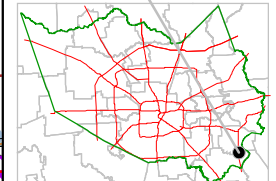


0 100 200
PUBLICATION DATE:
8/15/2011

Geospatial or map data maintained by the Harris County Appraisal District is for informational purposes and may not have been prepared for or be suitable for legal, engineering, or surveying purposes. It does not represent an on-the-ground survey and only represents the approximate location of property boundaries.



MAP LOCATION



FACET 6251A

1	2	3	4
5	6	7	8
9	10	11	12

6251A7