

Harris County Appraisal District

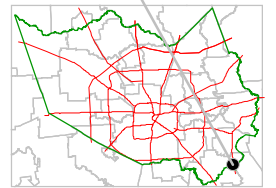


0 100 200
PUBLICATION DATE:
 8/15/2011

Geospatial or map data maintained by the Harris County Appraisal District is for informational purposes and may not have been prepared for or be suitable for legal, engineering, or surveying purposes. It does not represent an on-the-ground survey and only represents the approximate location of property boundaries.

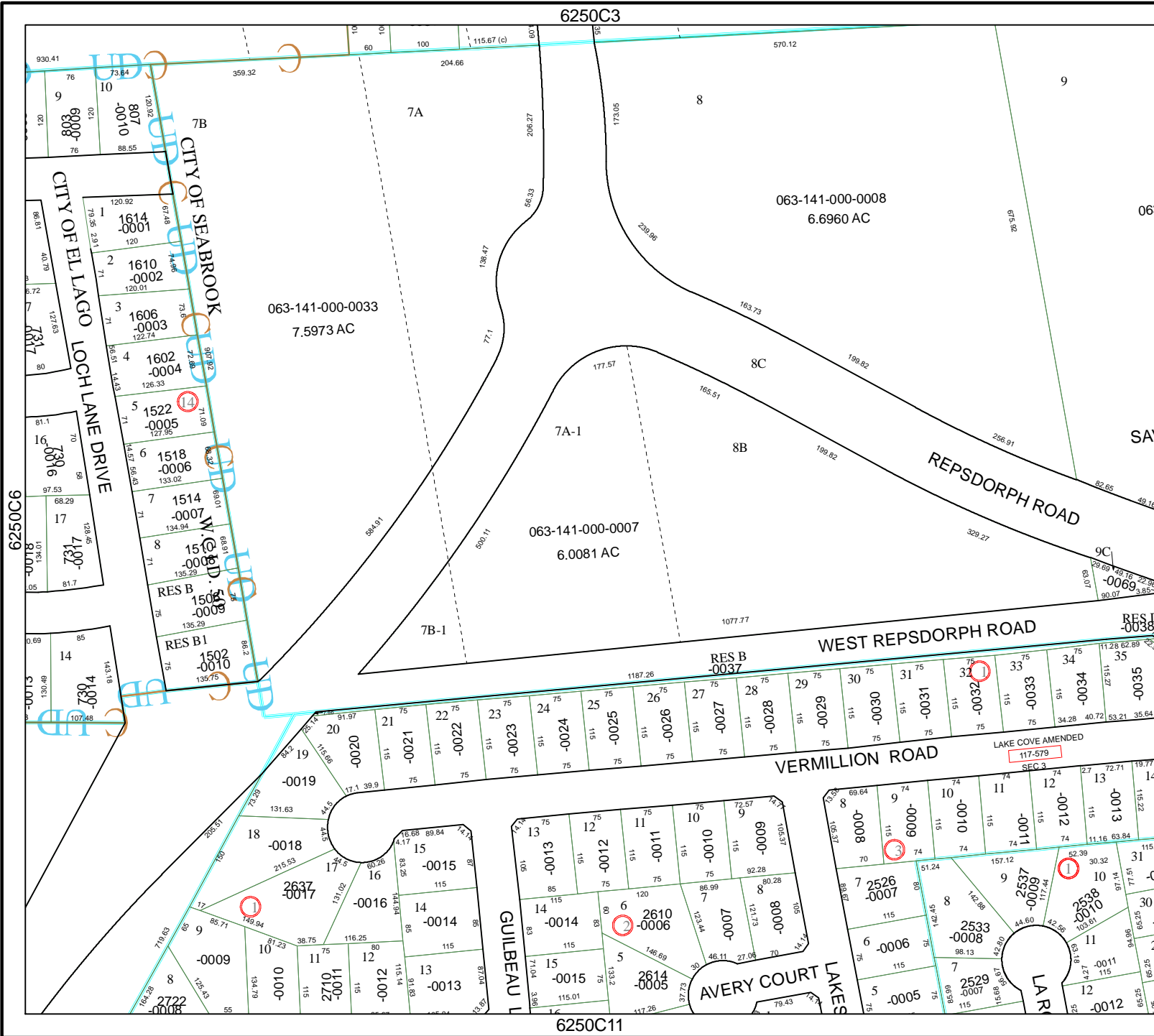


MAP LOCATION



FACET 6250C

1	2	3	4
5	6	7	8
9	10	11	12



6250C3

6250C11

6250C8

6250C6

CITY OF SEABROOK

CITY OF EL LAGO

RES B
-0037

RES B1
-0010

RES B
-0037

RES B
-0038

LAKE COVE AMENDED
117-579
SEC 3

AVERY COURT

LAKES

LAR

W. G. RD.

REPSDORPH ROAD

WEST REPSDORPH ROAD

VERMILLION ROAD

GUILBEAU

063-141-000-0033
7.5973 AC

063-141-000-0008
6.6960 AC

063-141-000-0007
6.0081 AC

1614
-0001

1610
-0002

1606
-0003

1602
-0004

1522
-0005

1518
-0006

1514
-0007

1507
-0008

1505
-0009

1502
-0010

1499
-0011

1496
-0012

1493
-0013

1490
-0014

1487
-0015

1484
-0016

1481
-0017

1478
-0018

1475
-0019

1472
-0020

20
-0020

21
-0021

22
-0022

23
-0023

24
-0024

25
-0025

26
-0026

27
-0027

28
-0028

29
-0029

30
-0030

31
-0031

32
-0032

33
-0033

34
-0034

35
-0035

36
-0036

37
-0037

38
-0038

39
-0039

40
-0040

41
-0041

42
-0042

43
-0043

44
-0044

45
-0045

46
-0046

47
-0047

48
-0048

49
-0049

50
-0050

51
-0051

52
-0052

53
-0053

54
-0054

55
-0055

56
-0056

57
-0057

58
-0058

59
-0059

60
-0060

61
-0061

62
-0062

63
-0063

64
-0064

65
-0065

66
-0066

67
-0067

68
-0068

69
-0069

70
-0070

71
-0071

72
-0072

73
-0073

74
-0074

75
-0075

76
-0076

77
-0077

78
-0078

79
-0079

80
-0080

81
-0081

82
-0082

83
-0083

84
-0084

85
-0085

86
-0086

87
-0087

88
-0088

89
-0089

90
-0090

91
-0091

92
-0092

93
-0093

94
-0094

95
-0095

96
-0096

97
-0097

98
-0098

99
-0099

100
-0100

101
-0101

102
-0102

103
-0103

104
-0104

105
-0105

106
-0106

107
-0107

108
-0108

109
-0109

110
-0110

111
-0111

112
-0112

113
-0113

114
-0114

115
-0115

116
-0116

117
-0117

118
-0118

119
-0119

120
-0120

121
-0121

930.41

76

120

73.84

120

73.95 2.91

40.79

127.63

73.7

127.63

81.1

70

730.916

97.53

68.29

9

10

73.84

120

73.95 2.91

40.79

127.63

73.7

127.63

81.1

70

730.916

97.53

68.29

120

359.32

7B

120.92

73.95 2.91

120

73.95 2.91

40.79

127.63

73.7

127.63

81.1

70

730.916

97.53

68.29

100

115.67 (c)

801

60

100

115.67 (c)

801

60

100

115.67 (c)

801

60

100

115.67 (c)

801

204.66

7A

208.27

56.33

188.47

77.1

177.57

177.57

165.51

199.82

199.82

199.82

199.82

199.82

199.82

570.12

8

173.05

229.96

163.73

165.51

199.82

199.82

199.82

199.82

199.82

199.82

199.82

199.82

199.82

615.26

9

615.26

615.26

615.26

615.26

615.26

615.26

615.26

615.26

615.26

615.26

615.26

615.26

615.26

06

063-141-000-0008

6.6960 AC

063-141-000-0007

6.0081 AC

063-141-000-0033

7.5973 AC

063-141-000-0008

6.69