

6169A2

3407
041-005-003-0048
23.9500 AC

Harris County Appraisal District

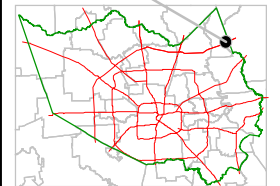


0 100 200
PUBLICATION DATE:
8/15/2011

Geospatial or map data maintained by the Harris County Appraisal District is for informational purposes and may not be suitable for legal, engineering, or surveying purposes. It does not represent an on-the-ground survey and only represents the approximate location of property boundaries.

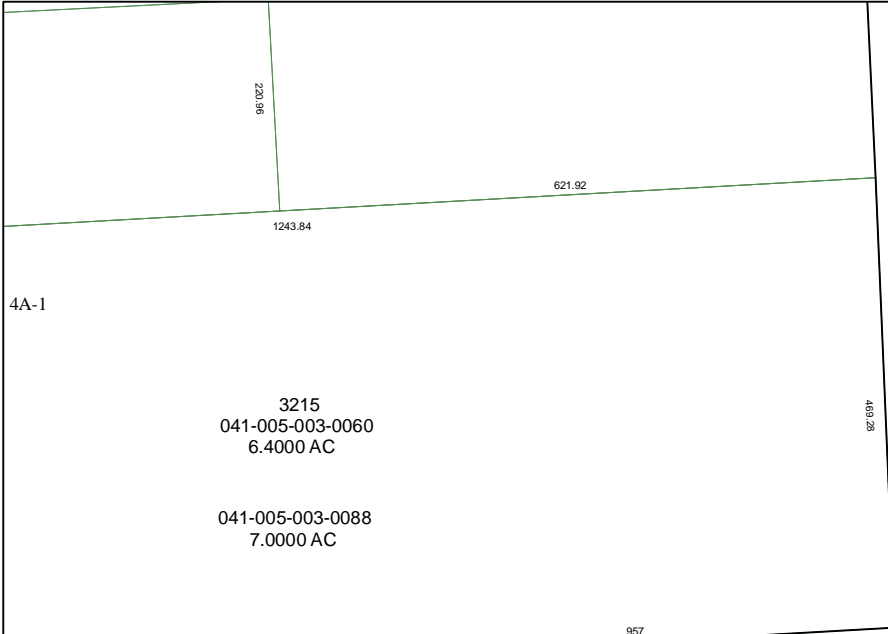


MAP LOCATION

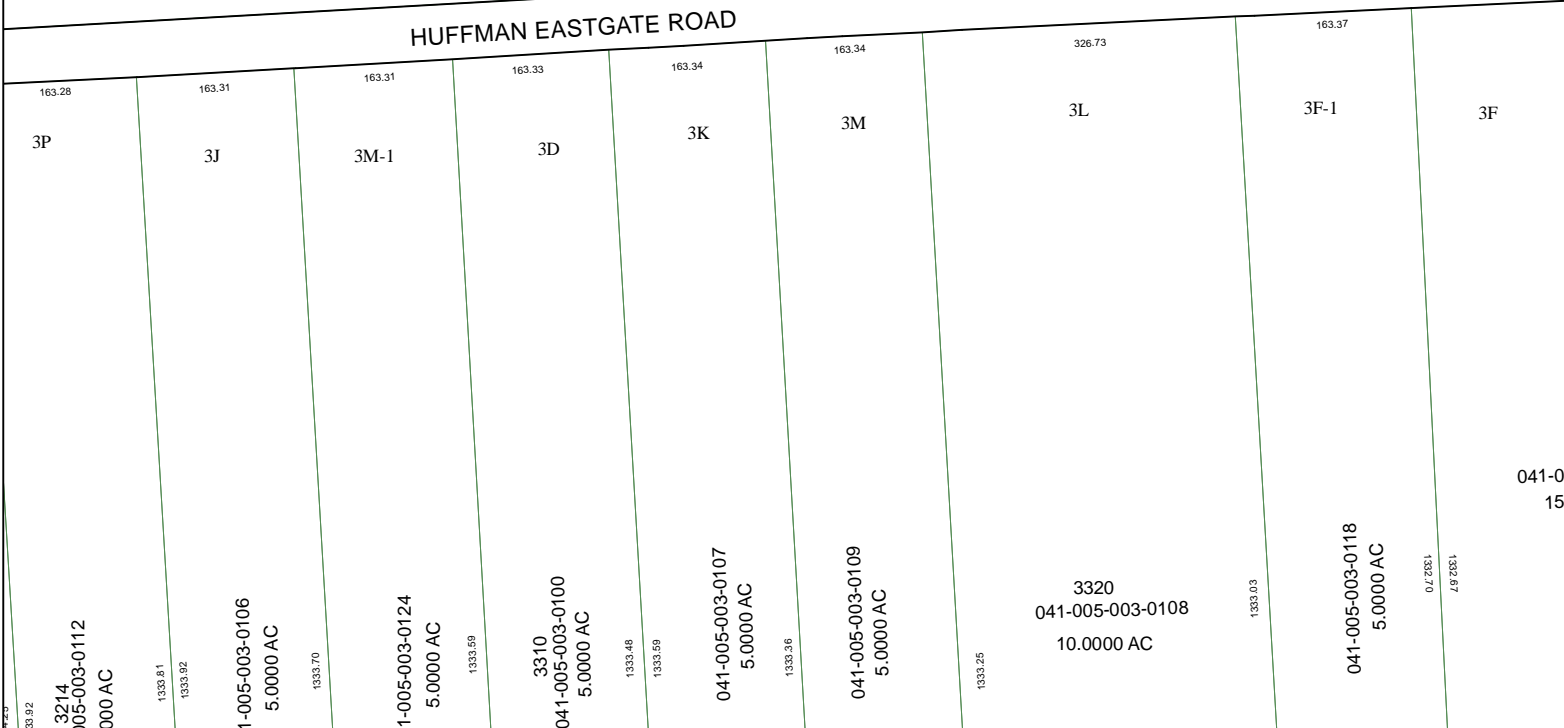


FACET 6169A

1	2	3	4
5	6	7	8
9	10	11	12



HUFFMAN EASTGATE ROAD



6169A10

6169A5

6169A7

041-005-003-0118
15.0000 AC