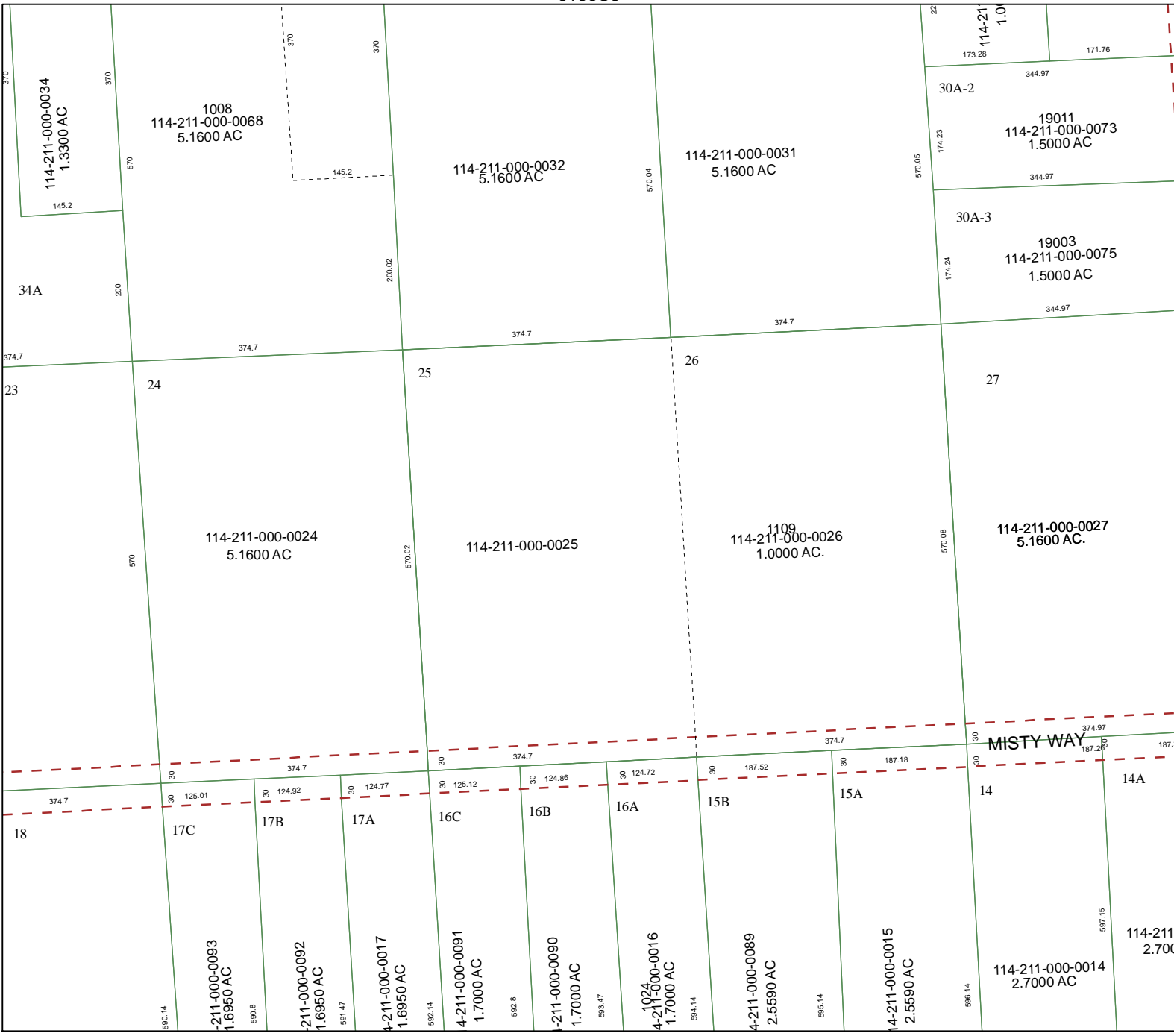


6166C5

6066D12



6165A1

# Harris County Appraisal District

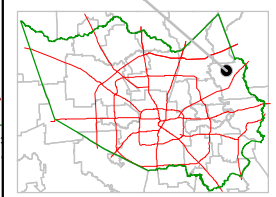


**PUBLICATION DATE:**  
12/16/2011

Geospatial or map data maintained by the Harris County Appraisal District is for informational purposes and may **not** have been prepared for or be suitable for legal, engineering, or surveying purposes. It does **not** represent an on-the-ground survey and only represents the approximate location of property boundaries.



**MAP LOCATION**



## FACET 6166C

1	2	3	4
5	6	7	8
9	10	11	12

6166C10

114-211-000-0014  
2.7000 AC

114-211-000-0015  
2.5590 AC

114-211-000-0089  
2.5590 AC

114-211-000-0016  
1.7000 AC

114-211-000-0091  
1.7000 AC

114-211-000-0017  
1.6950 AC

114-211-000-0093  
1.6950 AC

MISTY WAY

14

14A

18

17C

17B

17A

16C

16B

16A

15B

15A

14

14A

27

26

25

24

23

30A-2

30A-3

34A

1008  
114-211-000-0068  
5.1600 AC

114-211-000-0032  
5.1600 AC

114-211-000-0031  
5.1600 AC

19011  
114-211-000-0073  
1.5000 AC

19003  
114-211-000-0075  
1.5000 AC

114-211-000-0027  
5.1600 AC

1109  
114-211-000-0026  
1.0000 AC

114-211-000-0024  
5.1600 AC

114-211-000-0025

114-211-000-0034  
1.3300 AC

114-211-000-0001  
1.0000 AC

22

173.28

171.76

344.97

174.23

570.05

174.24

344.97

374.7

374.7

374.7

374.7

374.7

570.08

570.02

570

370

370

570

370

370

145.2

200

200.02

374.7

374.7

30

187.52

30

187.18

30

187.28

30

187.28

30

187.28

30

187.28

30

125.12

30

124.86

30

124.72

30

125.12

30

124.86

30

124.72

30

125.01

30

124.92

30

124.77

30

125.12

30

124.86

30

124.72

374.7

30

125.01

30

124.92

30

124.77

30

125.12

30

124.86

30

124.72

30

374.97

30

187.28

30

187.28

30

187.28

30

187.28

30

187.28

30

187.28

30

187.28

30

187.28

374.97

30

187.28

30

187.28

30

187.28

30

187.28

30

187.28

30

187.28

30

187.28

30

187.28

374.97

30

187.28

30

187.28

30

187.28

30

187.28

30

187.28

30

187.28

30

187.28

30

187.28

114-211-000-0014  
2.7000 AC

595.14

595.14

595.14

595.14

595.14

595.14

595.14

595.14

597.15

595.14

595.14

595.14

595.14

595.14

595.14

595.14

595.14

597.15

595.14

595.14

595.14

595.14

595.14

595.14

595.14

595.14

374.97

374.7

374.7

374.7

374.7

374.7

374.7

374.7

374.7

374.97

374.7

374.7

374.7

374.7

374.7

374.7

374.7

374.7

374.97

374.7

374.7

374.7

374.7

374.7

374.7

374.7

374.7

374.97

374.7

374.7

374.7

374.7

374.7

374.7

374.7

374.7

374.97

374.7

374.7

374.7

374.7

374.7

374.7

374.7

374.7

374.97

374.7

374.7

374.7

374.7

374.7

374.7

374.7

374.7

374.97

374.7

374.7

374.7

374.7

374.7

374.7

374.7

374.7

374.97

374.7

374.7

374.7

374.7

374.7

374.7

374.7

374.7

374.97

374.7

374.7

374.7

374.7

374.7

374.7

374.7

374.7

374.97

374.7

374.7

374.7

374.7

374.7

374.7

374.7

374.7

374.97

374.7

374.7