

6166A1

281.49

82

ED ED ED ED ED ED ED ED

205.55 60.5 140.7 150 368.59

10

11C 11D 11E 11G 11F 11B 15A-1

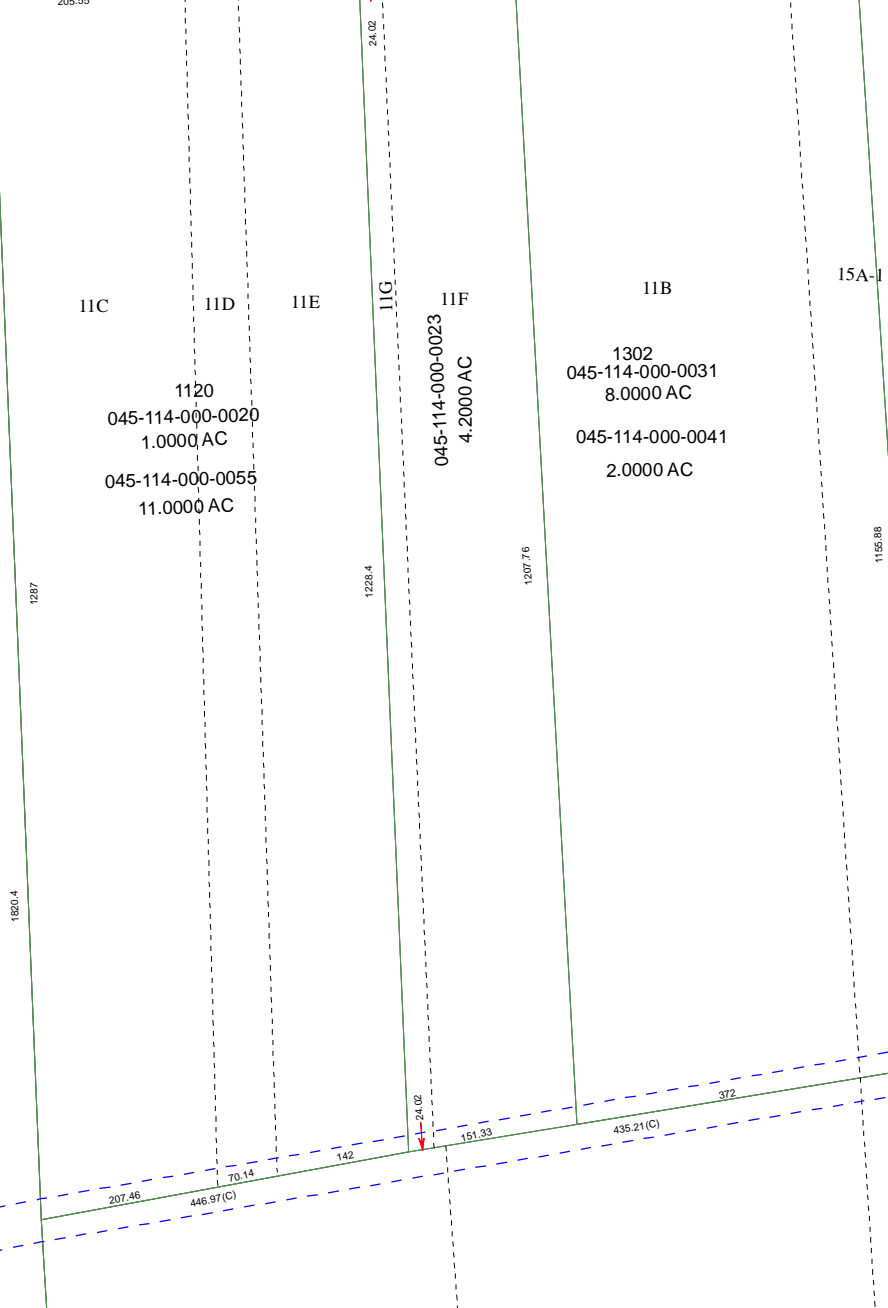
1120
045-114-000-0020
1.0000 AC

045-114-000-0055
11.0000 AC

045-114-000-0023
4.2000 AC

1302
045-114-000-0031
8.0000 AC

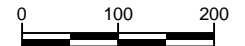
045-114-000-0041
2.0000 AC



6166A9

6066B8

Harris County Appraisal District

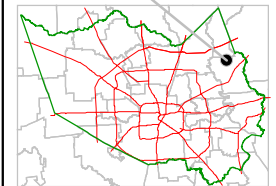


PUBLICATION DATE:
8/15/2011

Geospatial or map data maintained by the Harris County Appraisal District is for informational purposes and may **not** have been prepared for or be suitable for legal, engineering, or surveying purposes. It does **not** represent an on-the-ground survey and only represents the approximate location of property boundaries.



MAP LOCATION



FACET 6166A

1	2	3	4
5	6	7	8
9	10	11	12