

6165B8

6165B11

6165D4

Harris County Appraisal District



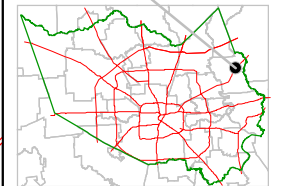
0 100 200

PUBLICATION DATE:
12/13/2011

Geospatial or map data maintained by the Harris County Appraisal District is for informational purposes and may **not** have been prepared for or be suitable for legal, engineering, or surveying purposes. It does **not** represent an on-the-ground survey and only represents the approximate location of property boundaries.



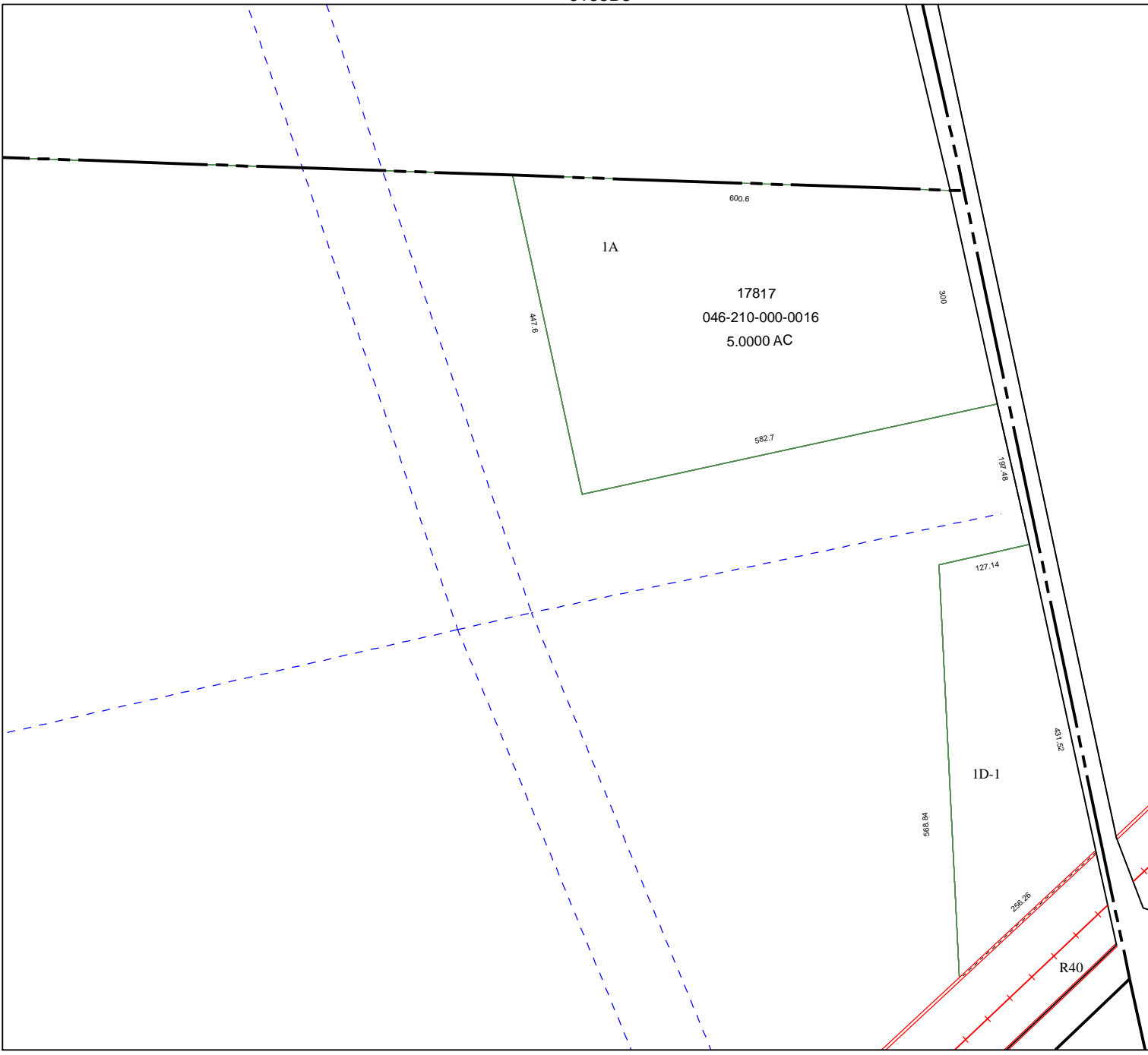
MAP LOCATION



6265A9

FACET 6165B

1	2	3	4
5	6	7	8
9	10	11	12



HWY. 90