

6165D10

Harris County Appraisal District

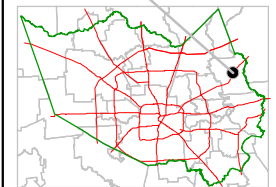


0 100 200

PUBLICATION DATE:
12/13/2011

Geospatial or map data maintained by the Harris County Appraisal District is for informational purposes and may not have been prepared for or be suitable for legal, engineering, or surveying purposes. It does not represent an on-the-ground survey and only represents the approximate location of property boundaries.

MAP LOCATION



FACET 6164B

1	2	3	4
5	6	7	8
9	10	11	12

6164B1

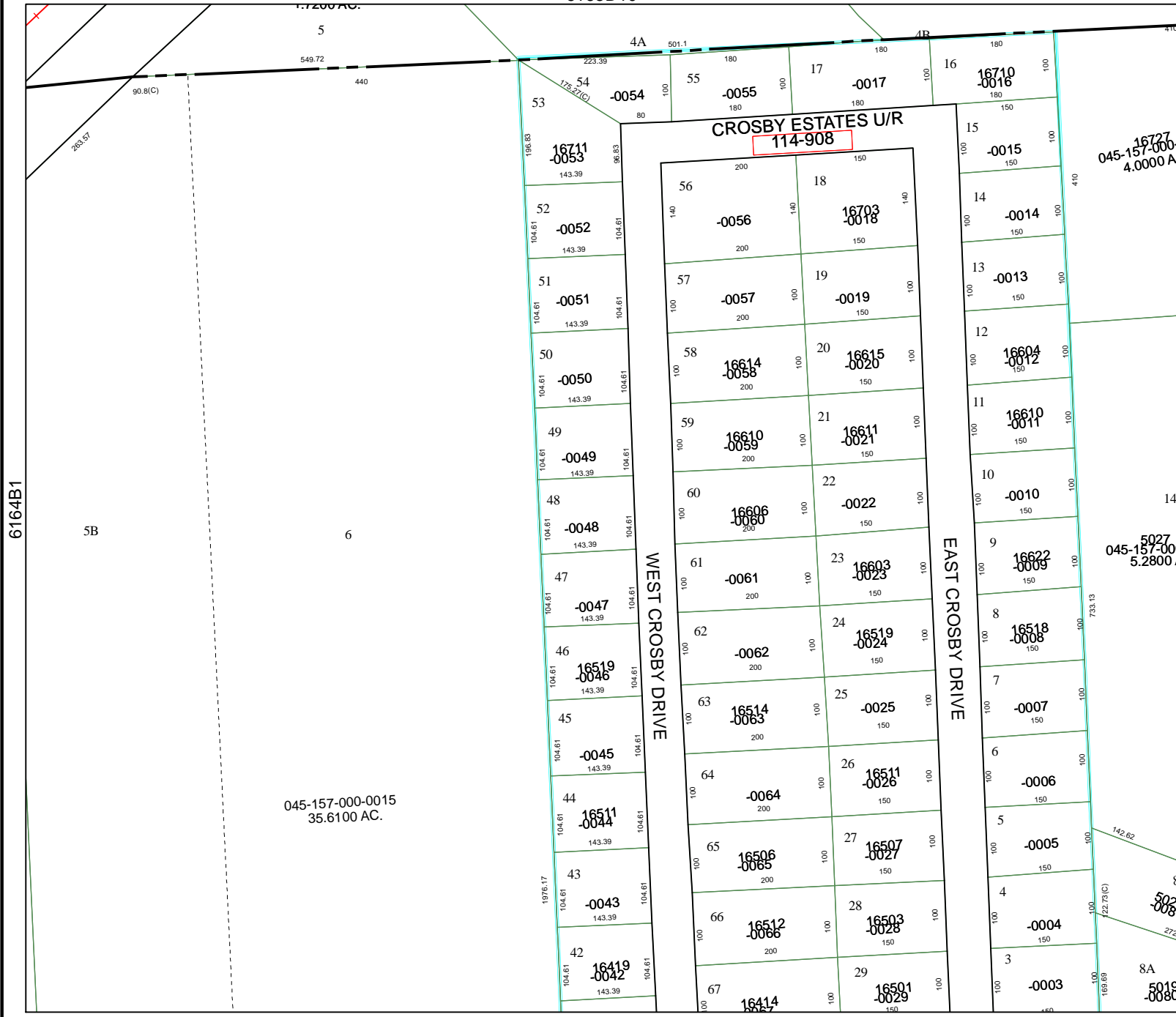
5B

045-157-000-0015
35.6100 AC.

6

6164B6

6164B3



CROSBY ESTATES U/R
114-908

WEST CROSBY DRIVE

EAST CROSBY DRIVE