

# Harris County Appraisal District



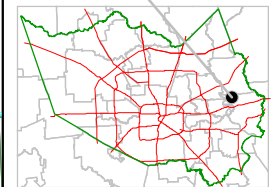
0 100 200

PUBLICATION DATE:  
9/1/2011

Geospatial or map data maintained by the Harris County Appraisal District is for informational purposes and may **not** have been prepared for or be suitable for legal, engineering, or surveying purposes. It does **not** represent an on-the-ground survey and only represents the approximate location of property boundaries.

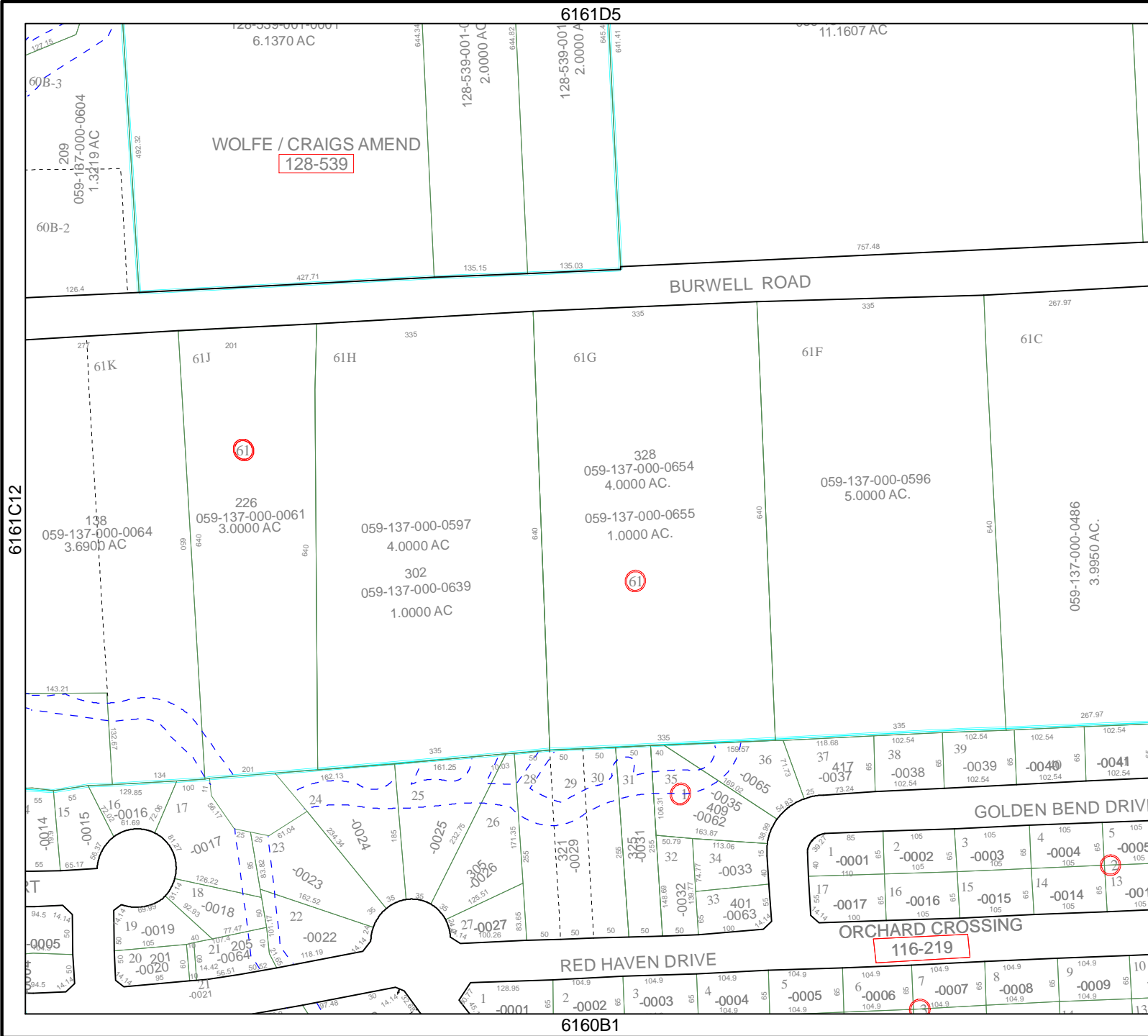


MAP LOCATION



## FACET 6161D

1	2	3	4
5	6	7	8
9	10	11	12



6161C12

6161D5

6161D10

6160B1

WOLFE / CRAIGS AMEND  
128-539

ORCHARD CROSSING  
116-219