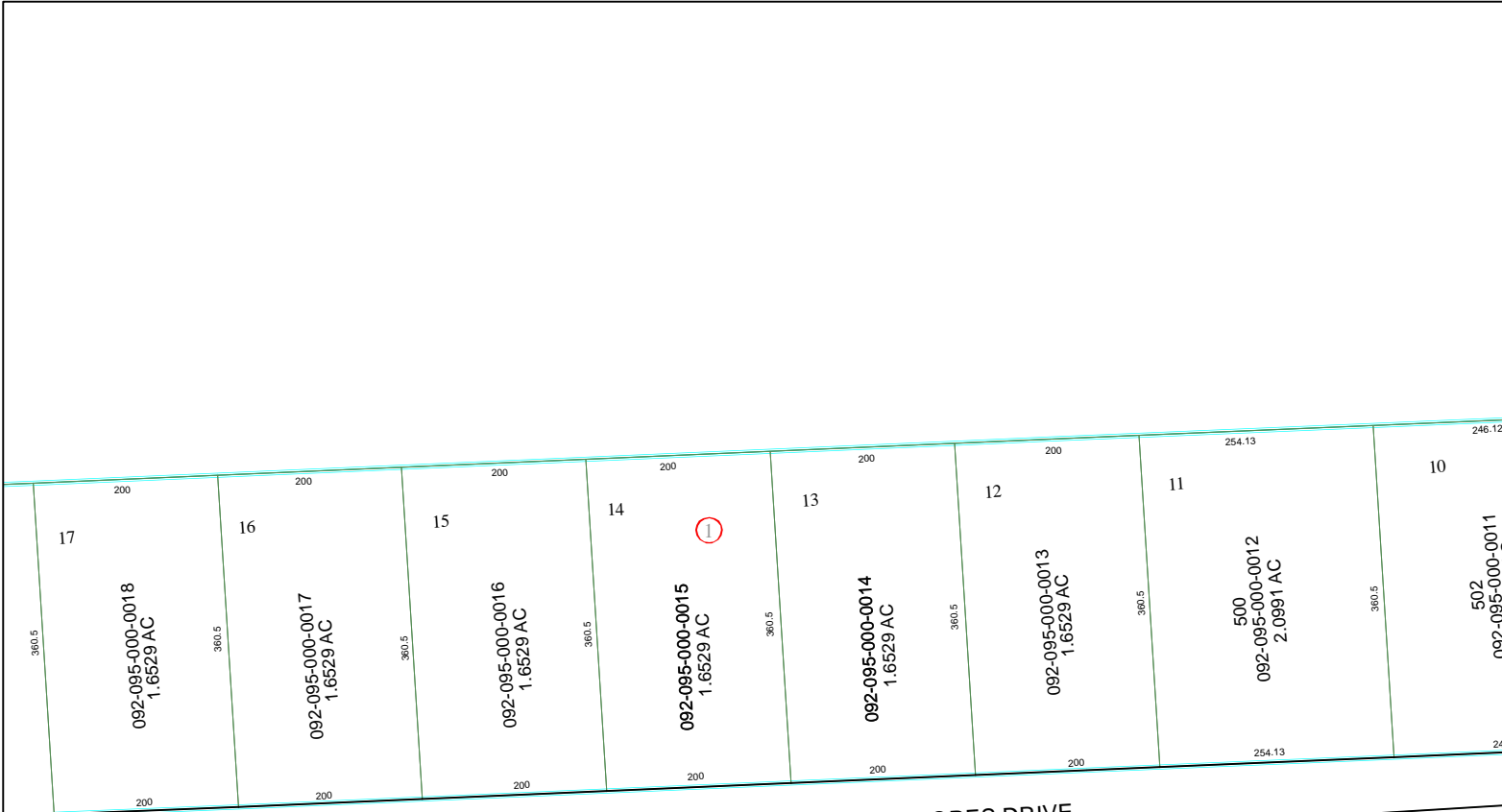


6161C2

6161C5

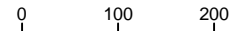


HIGHLAND SHORES DRIVE

4253.84(C)

6161C10

Harris County Appraisal District

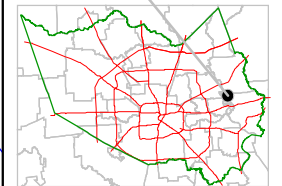


PUBLICATION DATE: 8/15/2011

Geospatial or map data maintained by the Harris County Appraisal District is for informational purposes and may not have been prepared for or be suitable for legal, engineering, or surveying purposes. It does not represent an on-the-ground survey and only represents the approximate location of property boundaries.



MAP LOCATION



FACET 6161C

1	2	3	4
5	6	7	8
9	10	11	12

6161C7