

Harris County Appraisal District

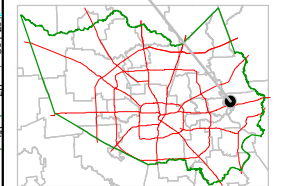


0 100 200
PUBLICATION DATE:
 8/18/2011

Geospatial or map data maintained by the Harris County Appraisal District is for informational purposes and may not have been prepared for or be suitable for legal, engineering, or surveying purposes. It does not represent an on-the-ground survey and only represents the approximate location of property boundaries.



MAP LOCATION

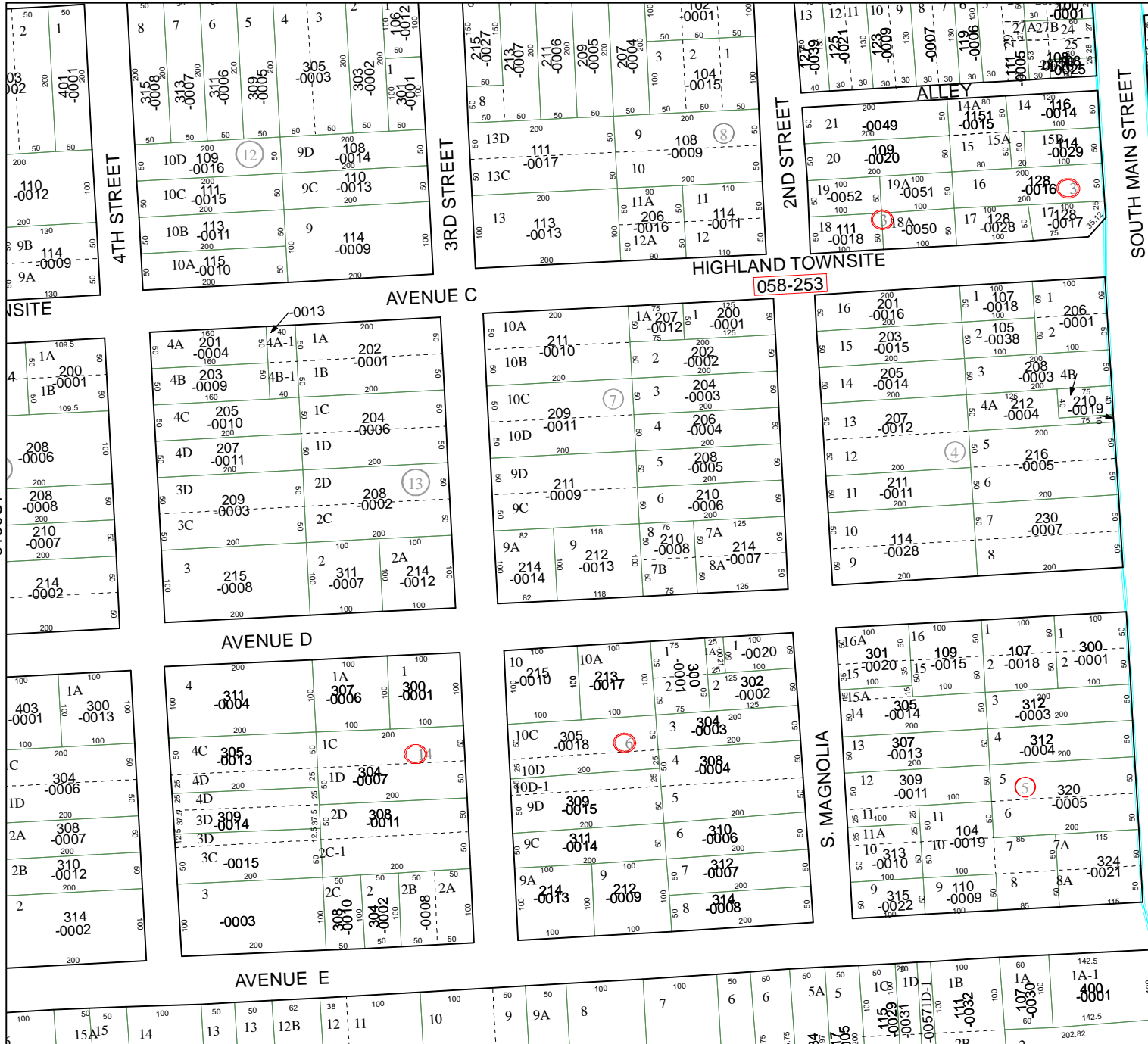


FACET 6160C

1	2	3	4
5	6	7	8
9	10	11	12

6160C4

6160C12



4TH STREET

3RD STREET

2ND STREET

SOUTH MAIN STREET

AVENUE C

AVENUE D

AVENUE E

HIGHLAND TOWNSITE

058-253

S. MAGNOLIA

ALLEY

6160C7

6160D5