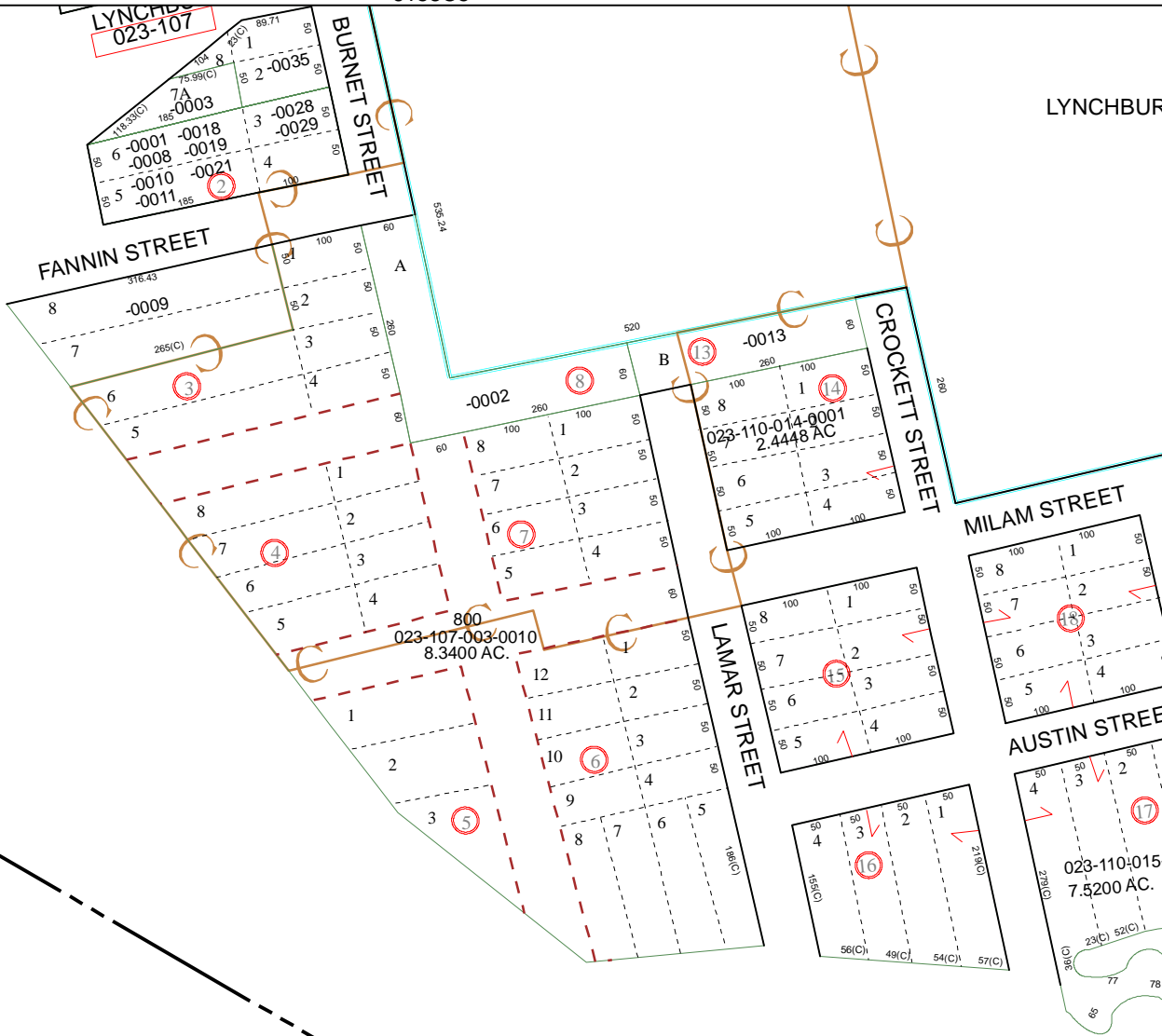


6158C5

LYNCHBURG
023-107



LYNCHBURG

Harris County Appraisal District

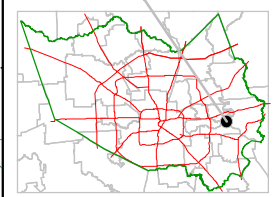


0 100 200
 PUBLICATION DATE:
 9/1/2011

Geospatial or map data maintained by the Harris County Appraisal District is for informational purposes and may not have been prepared for or be suitable for legal, engineering, or surveying purposes. It does not represent an on-the-ground survey and only represents the approximate location of property boundaries.



MAP LOCATION



FACET 6158C

1	2	3	4
5	6	7	8
9	10	11	12

6157A1

6058D12