

Harris County Appraisal District



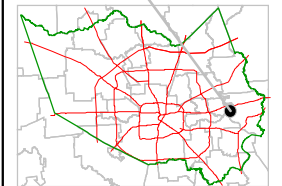
0 100 200

PUBLICATION DATE:
8/15/2011

Geospatial or map data maintained by the Harris County Appraisal District is for informational purposes and may not have been prepared for or be suitable for legal, engineering, or surveying purposes. It does not represent an on-the-ground survey and only represents the approximate location of property boundaries.



MAP LOCATION



FACET 6158A

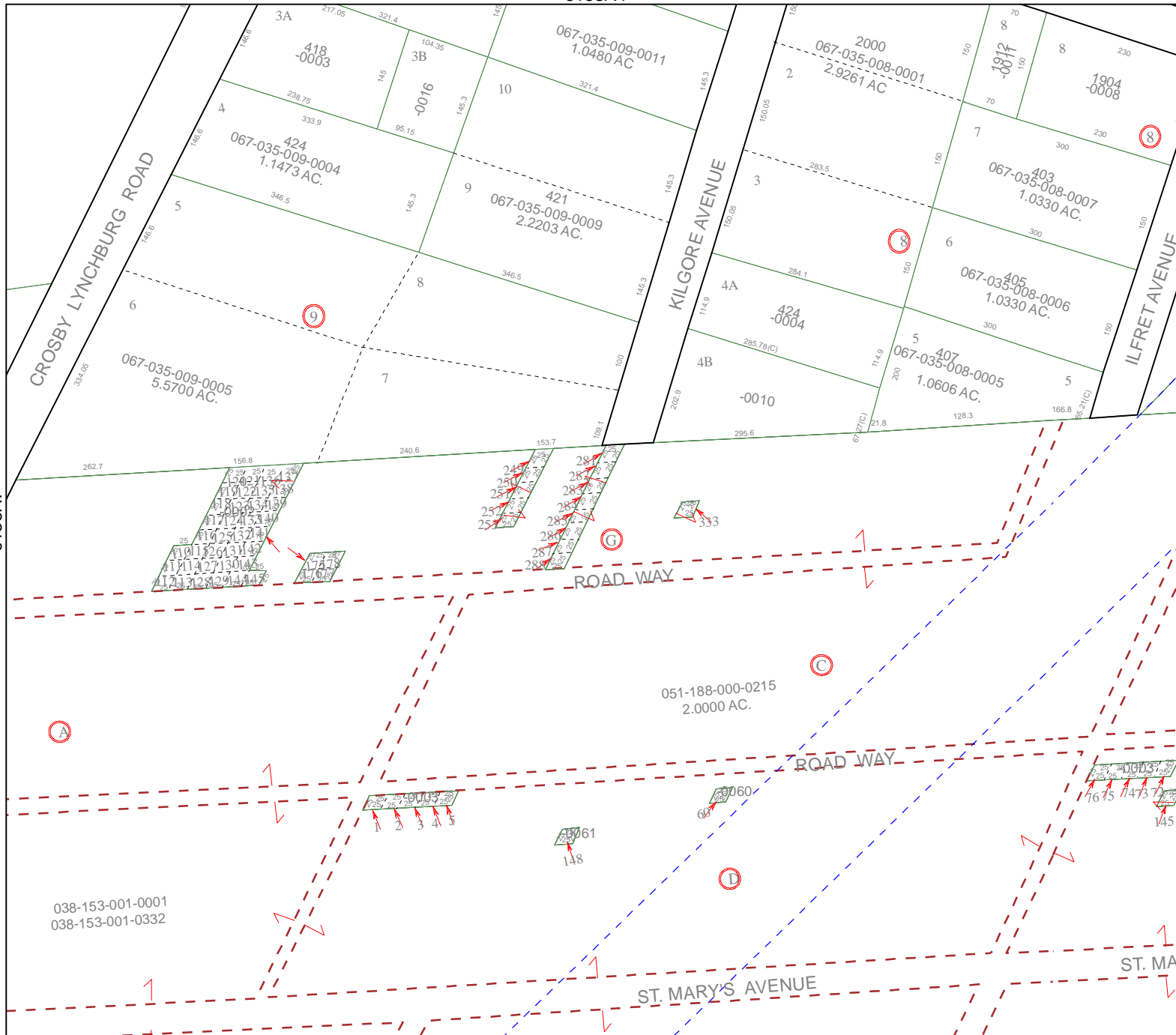
1	2	3	4
5	6	7	8
9	10	11	12

6158A4

6158A12

6158A7

6158B5



038-153-001-0001
038-153-001-0332

051-188-000-0215
2.0000 AC.

400037
7675 7473 7145

61
148

60

150271 25 4 25
1702137 33
1802430 37
1902734 41
2003038 45
2103342 49
2203646 53
2303950 57
2404254 61
2504558 65
2604862 69
2705166 73
2805470 77
2905774 81
3006078 85
3106382 89
3206686 93
3306990 97
3407294 101
3507598 105
3607902 109
3708206 113
3808510 117
3908814 121
4009118 125
4109422 129
4209726 133
4310030 137
4410334 141
4510638 145
4610942 149
4711246 153
4811550 157
4911858 161
5012166 165
5112470 169
5212774 173
5313078 177
5413382 181
5513686 185
5613990 189
5714298 193
5814602 197
5914906 201
6015214 205
6115518 209
6215826 213
6316130 217
6416434 221
6516742 225
6617050 229
6717354 233
6817658 237
6917966 241
7018274 245
7118582 249
7218886 253
7319194 257
7419502 261
7519810 265
7620018 269
7720326 273
7820634 277
7920942 281
8021258 285
8121566 289
8221874 293
8322182 297
8422490 301
8522802 305
8623110 309
8723418 313
8823726 317
8924034 321
9024342 325
9124650 329
9224958 333
9325270 337
9425578 341
9525886 345
9626194 349
9726502 353
9826810 357
9927118 361
10027426 365