

6156B10

6156D1

Harris County Appraisal District

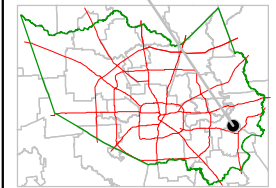


PUBLICATION DATE:
7/20/2011

Geospatial or map data maintained by the Harris County Appraisal District is for informational purposes and may **not** have been prepared for or be suitable for legal, engineering, or surveying purposes. It does **not** represent an on-the-ground survey and only represents the approximate location of property boundaries.



MAP LOCATION

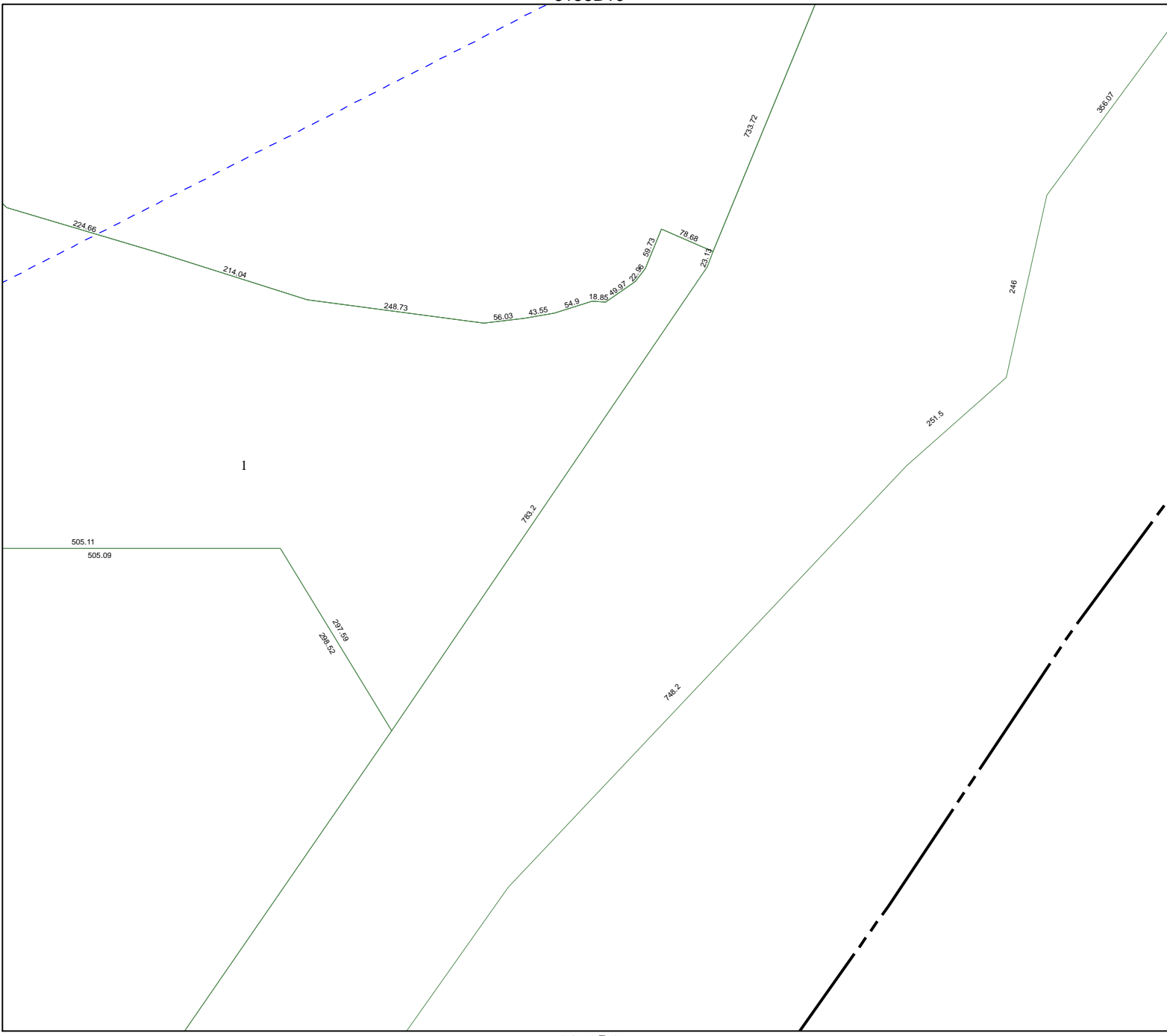


FACET 6156D

1	2	3	4
5	6	7	8
9	10	11	12

6156D6

6156D3



1

505.11
505.09

297.59
258.92

783.2

788.2

297.5

246

358.07

733.72

78.68

231.13

59.73

22.96

18.85

54.9

43.55

56.03

248.73

214.04

224.66