

6154D2

Harris County Appraisal District



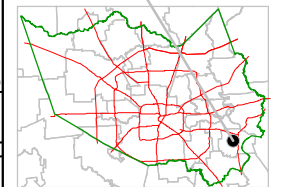
0 100 200

PUBLICATION DATE:
8/15/2011

Geospatial or map data maintained by the Harris County Appraisal District is for informational purposes and may not have been prepared for or be suitable for legal, engineering, or surveying purposes. It does not represent an on-the-ground survey and only represents the approximate location of property boundaries.



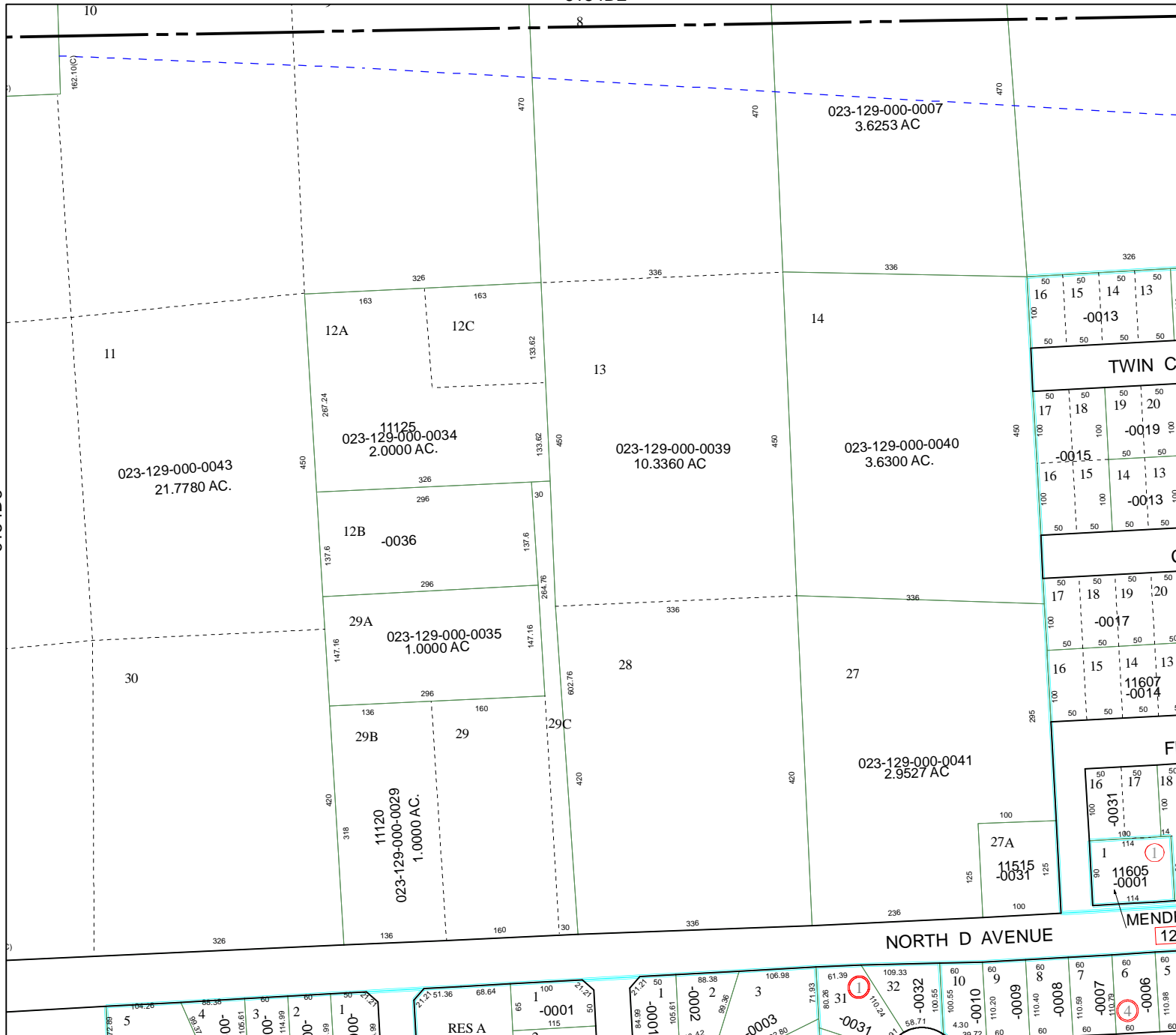
MAP LOCATION



FACET 6154D

1	2	3	4
5	6	7	8
9	10	11	12

6154D5



6154D7

NORTH D AVENUE

MENDE 127

6154D10