

6154D1

473C-1

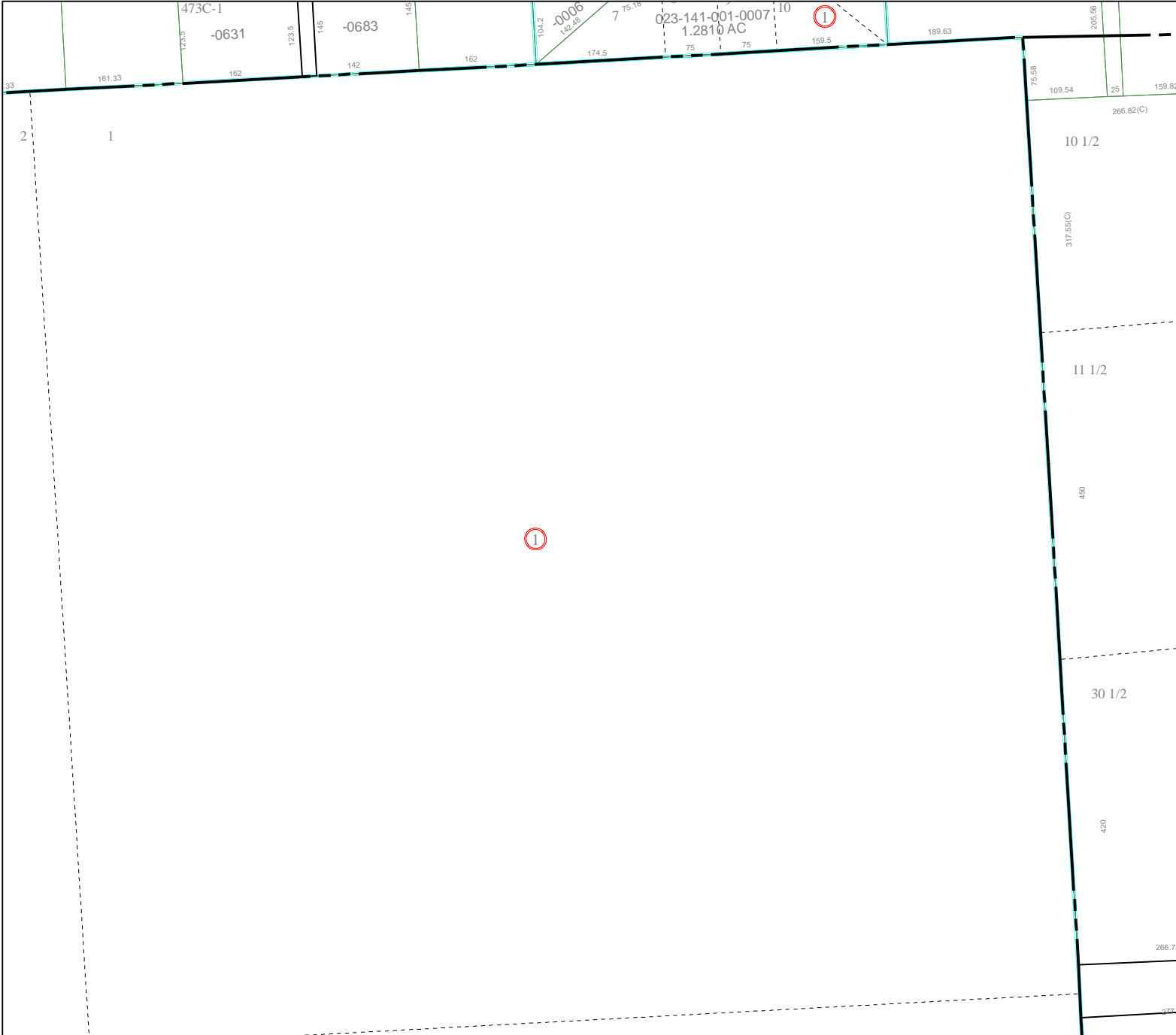
-0631

-0683

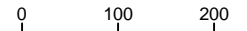
023-141-001-0007 10
1.2810 AC



6154C8



Harris County Appraisal District

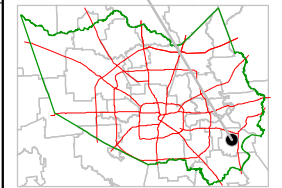


PUBLICATION DATE:
8/15/2011

Geospatial or map data maintained by the Harris County Appraisal District is for informational purposes and may **not** have been prepared for or be suitable for legal, engineering, or surveying purposes. It does **not** represent an on-the-ground survey and only represents the approximate location of property boundaries.



MAP LOCATION



FACET 6154D

1	2	3	4
5	6	7	8
9	10	11	12

6154D9