

Harris County Appraisal District

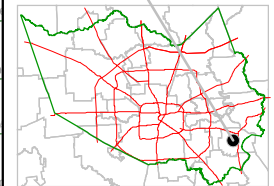


0 100 200

PUBLICATION DATE:
10/1/2011

Geospatial or map data maintained by the Harris County Appraisal District is for informational purposes and may not have been prepared for or be suitable for legal, engineering, or surveying purposes. It does not represent an on-the-ground survey and only represents the approximate location of property boundaries.

MAP LOCATION

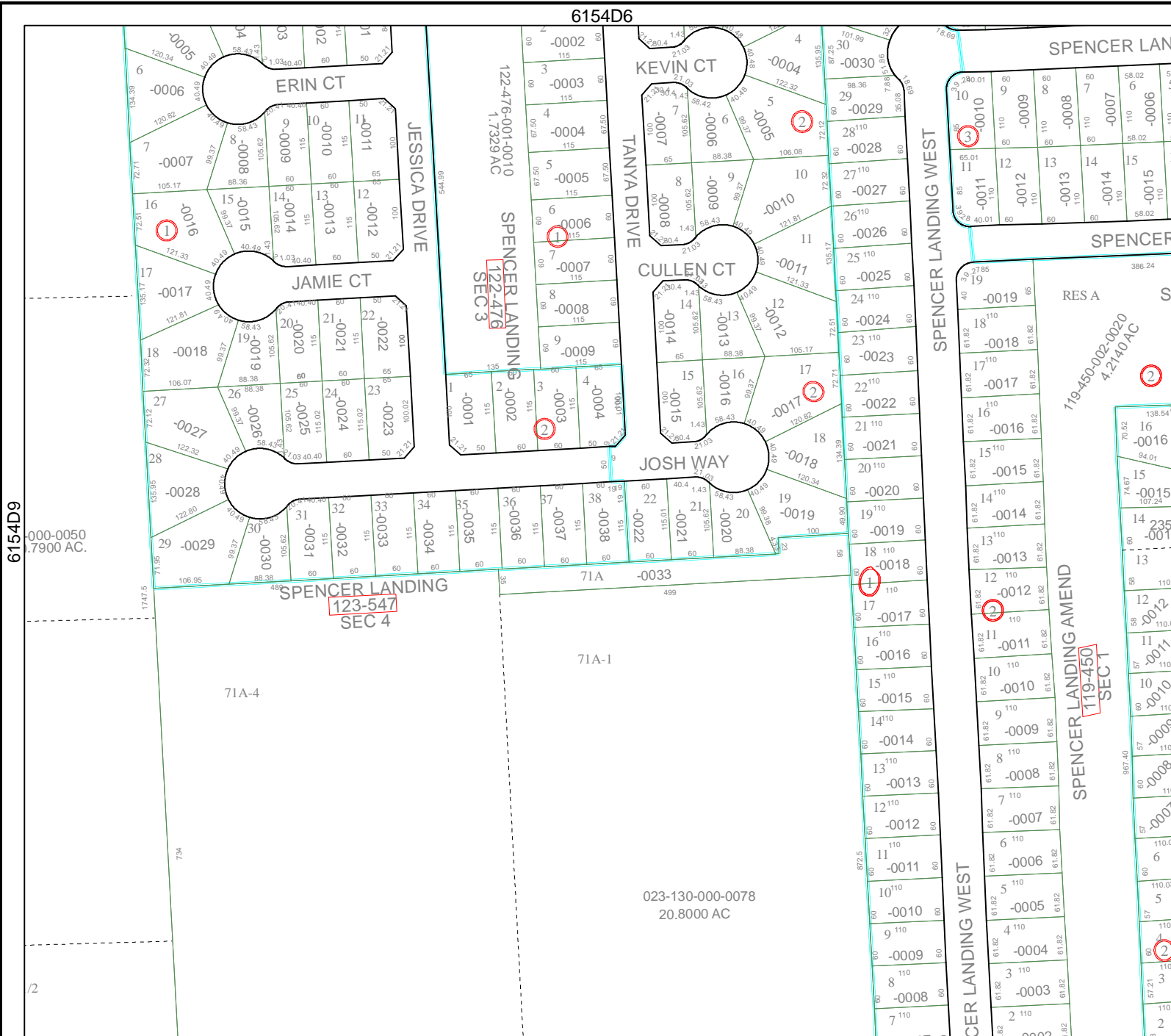


FACET 6154D

1	2	3	4
5	6	7	8
9	10	11	12

6154D6

6153B2



6154D9

6154D11



000-0050
7900 AC.

123-547
SEC 4

122-476
SEC 3

119-450-002-020
4.2140 AC

023-130-000-0078
20.8000 AC

12