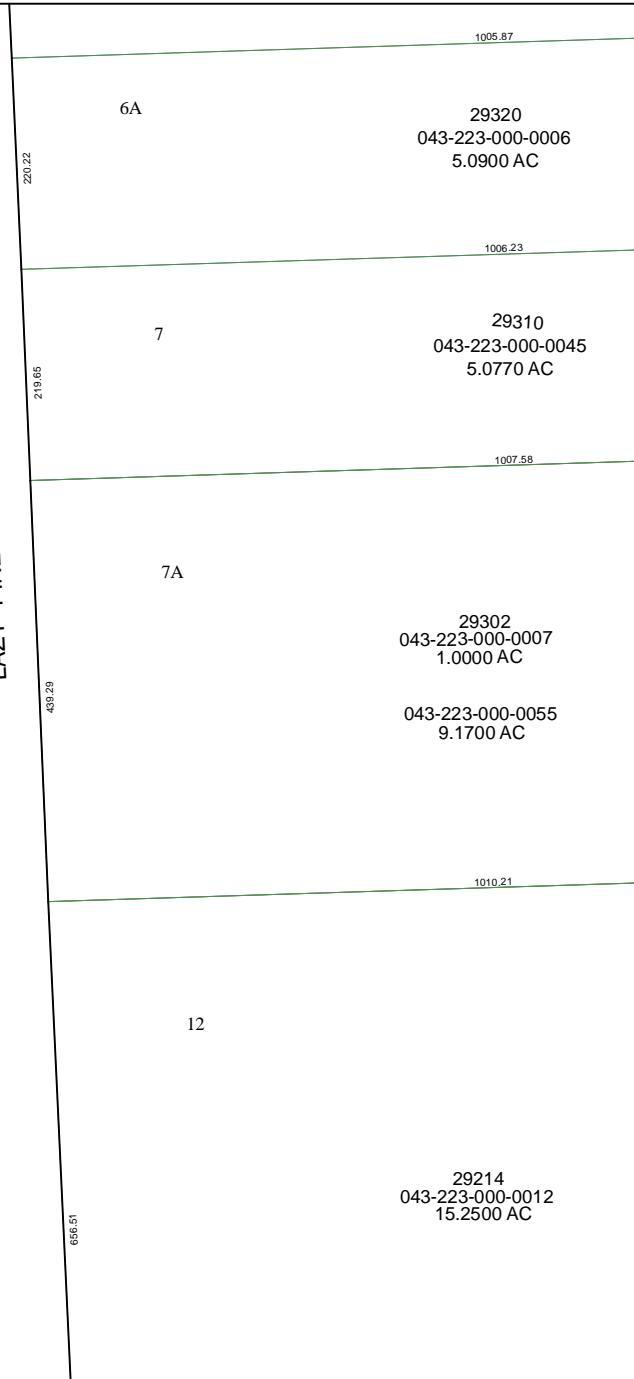
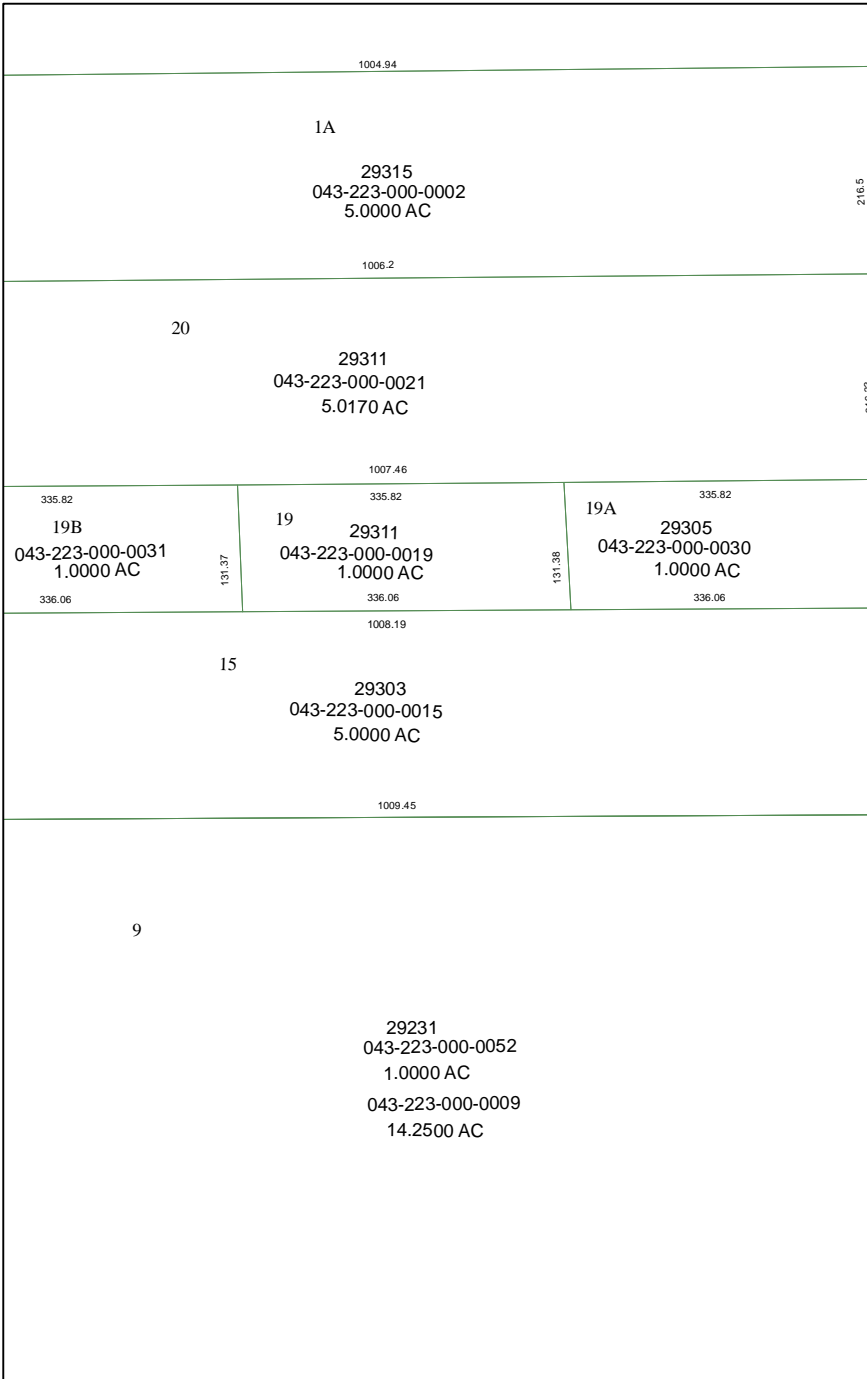


6071A5

5971B12

LAZY PINE STREET

6071C1



# Harris County Appraisal District

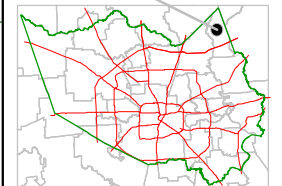


0 100 200  
 PUBLICATION DATE:  
 9/1/2011

Geospatial or map data maintained by the Harris County Appraisal District is for informational purposes and may not have been prepared for or be suitable for legal, engineering, or surveying purposes. It does not represent an on-the-ground survey and only represents the approximate location of property boundaries.



### MAP LOCATION



## FACET 6071A

1	2	3	4
5	6	7	8
9	10	11	12

6071A10