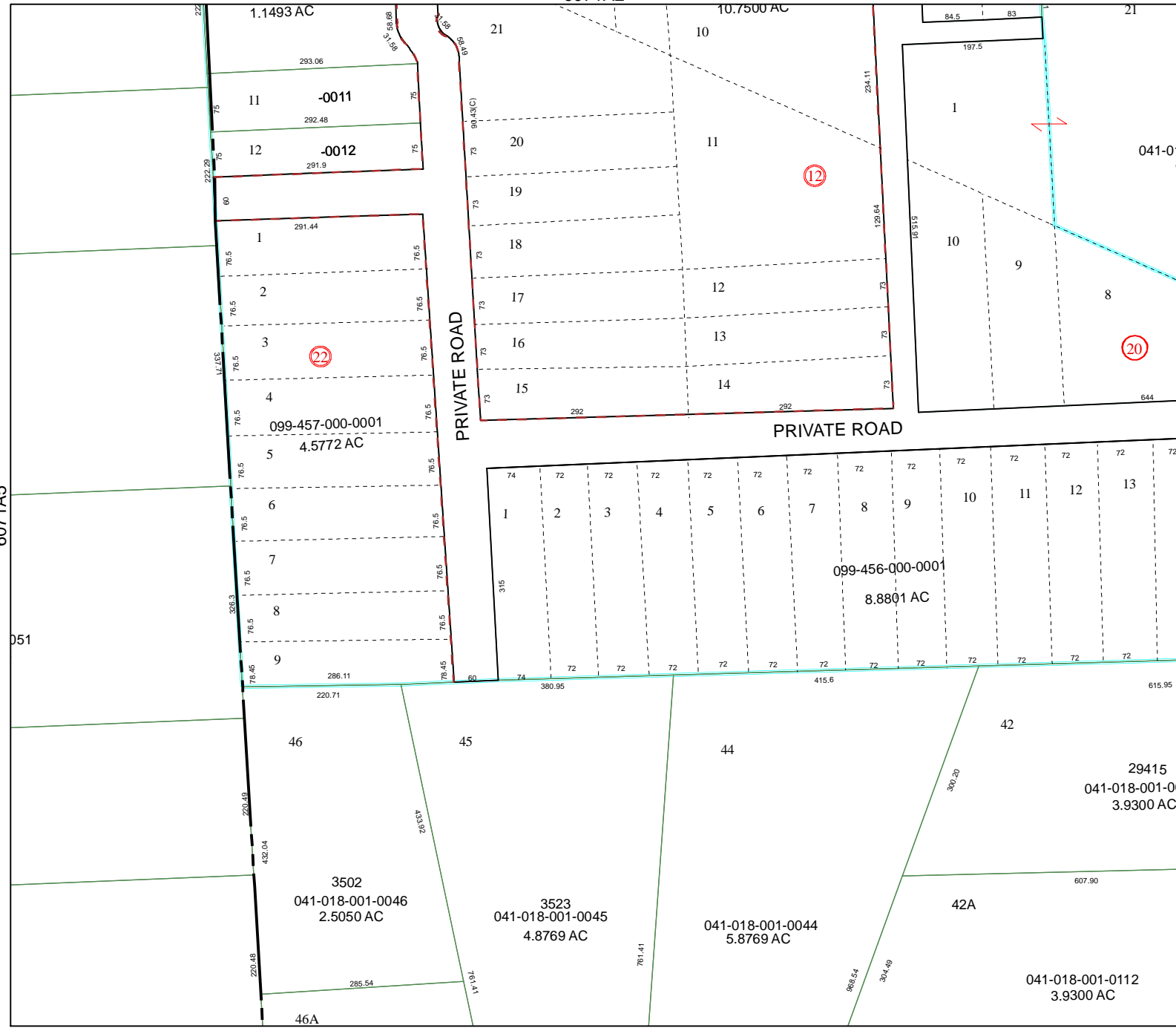


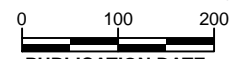
6071A2

6071A10

6071A5



Harris County Appraisal District

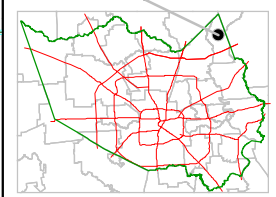


PUBLICATION DATE:
1/20/2012

Geospatial or map data maintained by the Harris County Appraisal District is for informational purposes and may **not** have been prepared for or be suitable for legal, engineering, or surveying purposes. It does **not** represent an on-the-ground survey and only represents the approximate location of property boundaries.



MAP LOCATION



FACET 6071A

1	2	3	4
5	6	7	8
9	10	11	12