

6072C11

Harris County Appraisal District



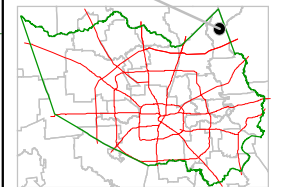
0 100 200

PUBLICATION DATE:
8/23/2011

Geospatial or map data maintained by the Harris County Appraisal District is for informational purposes and may not have been prepared for or be suitable for legal, engineering, or surveying purposes. It does not represent an on-the-ground survey and only represents the approximate location of property boundaries.

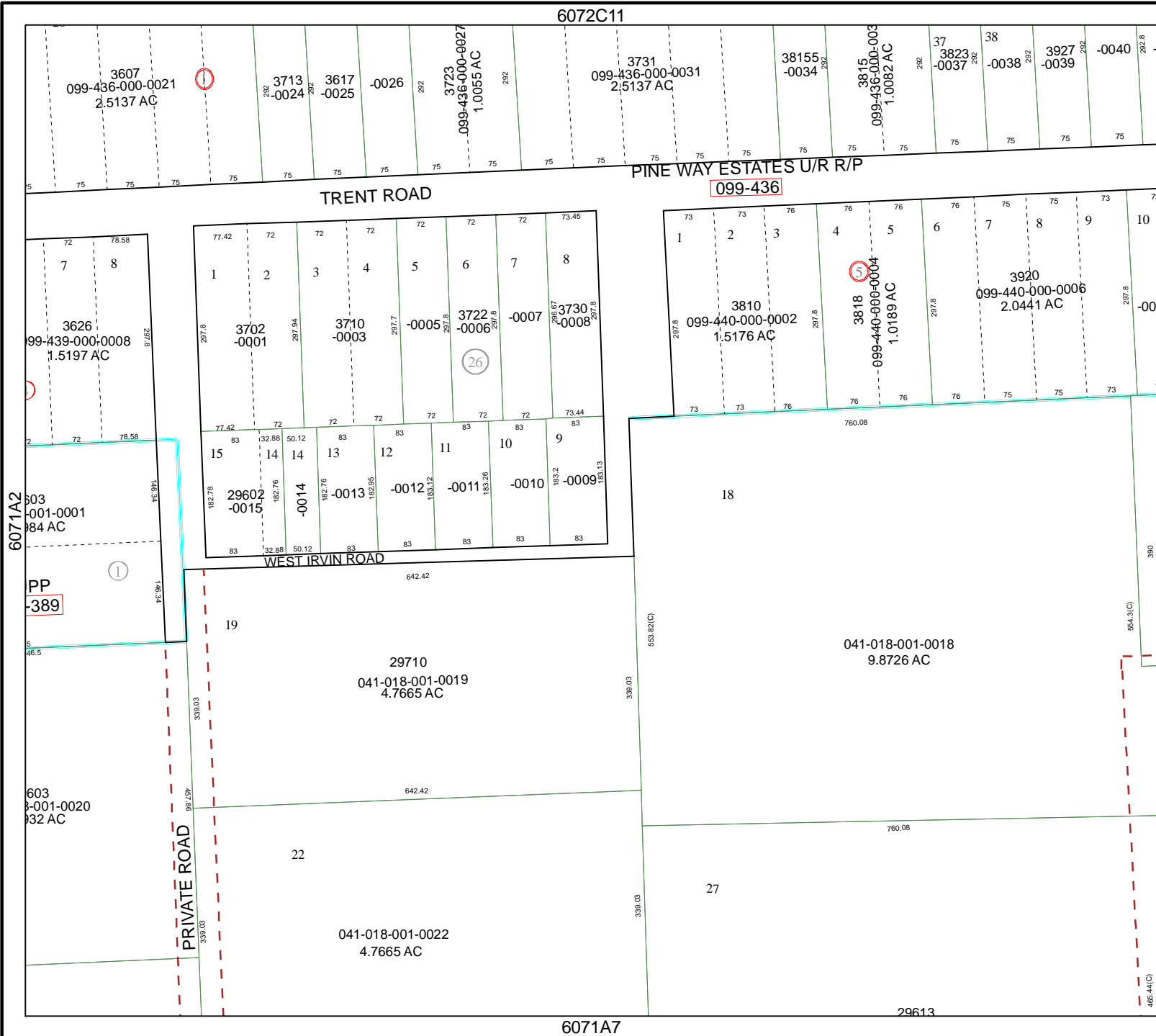


MAP LOCATION



FACET 6071A

1	2	3	4
5	6	7	8
9	10	11	12



6071A7

29613

6071A2

6071A4

PP
-389

1

041-018-001-0018
9.8726 AC

29710
041-018-001-0019
4.7665 AC

041-018-001-0022
4.7665 AC

099-436

5

26

18

27

19

22

3607
099-436-000-0021
2.5137 AC

3713
-0024

3617
-0025

3731
099-436-000-0031
2.5137 AC

38155
-0034

3815
099-436-000-0003
1.0082 AC

37
3823
-0037

38
-0038

3927
-0039

-0040

3626
99-439-000-0008
1.5197 AC

3702
-0001

3710
-0003

3810
099-440-000-0002
1.5176 AC

3818
099-440-000-0004
1.0189 AC

3920
099-440-000-0006
2.0441 AC

603
001-0001
084 AC

29602
-0015

-0014

-0013

-0012

-0011

-0010

-0009

603
8-001-0020
032 AC

PRIVATE ROAD

WEST IRVIN ROAD

558.82(C)

564.3(C)

339.03

465.44(C)

339.03

98.25P

PC 9P1

PC 9P1

98.25P

558.82(C)

564.3(C)

339.03

465.44(C)

339.03

98.25P

PC 9P1

PC 9P1

98.25P

558.82(C)

564.3(C)

339.03

465.44(C)

339.03

98.25P

PC 9P1

PC 9P1

98.25P

558.82(C)

564.3(C)

339.03

465.44(C)

339.03

98.25P

PC 9P1

PC 9P1

98.25P

558.82(C)

564.3(C)

339.03

465.44(C)

339.03

98.25P

PC 9P1

PC 9P1

98.25P

558.82(C)

564.3(C)

339.03

465.44(C)

339.03

98.25P

PC 9P1

PC 9P1

98.25P

558.82(C)

564.3(C)

339.03

465.44(C)

339.03

98.25P

PC 9P1

PC 9P1

98.25P

558.82(C)

564.3(C)

339.03

465.44(C)

339.03

98.25P

PC 9P1

PC 9P1

98.25P

558.82(C)

564.3(C)

339.03

465.44(C)

339.03

98.25P

PC 9P1

PC 9P1

98.25P

558.82(C)

564.3(C)

339.03

465.44(C)

339.03

98.25P

PC 9P1

PC 9P1

98.25P

558.82(C)

564.3(C)

339.03

465.44(C)

339.03

98.25P

PC 9P1

PC 9P1

98.25P

558.82(C)

564.3(C)

339.03

465.44(C)

339.03

98.25P

PC 9P1

PC 9P1

98.25P

558.82(C)

564.3(C)

339.03

465.44(C)

339.03

98.25P

PC 9P1

PC 9P1

98.25P

558.82(C)

564.3(C)

339.03

465.44(C)

339.03

98.25P

PC 9P1

PC 9P1

98.25P

558.82(C)

564.3(C)

339.03

465.44(C)

339.03

98.25P

PC 9P1

PC 9P1

98.25P

558.82(C)

564.3(C)

339.03

465.44(C)

339.03

98.25P

PC 9P1

PC 9P1

98.25P

558.82(C)

564.3(C)

339.03

465.44(C)

339.03

98.25P

PC 9P1

PC 9P1

98.25P

558.82(C)

564.3(C)

339.03

465.44(C)

339.03

98.25P

PC 9P1

PC 9P1

98.25P

558.82(C)

564.3(C)

339.03

465.44(C)

339.03

98.25P

PC 9P1

PC 9P1

98.25P

558.82(C)

564.3(C)

339.03

465.44(C)

339.03

98.25P

PC 9P1

PC 9P1

98.25P

558.82(C)

564.3(C)

339.03

465.44(C)

339.03

98.25P

PC 9P1

PC 9P1

98.25P

558.82(C)

564.3(C)

339.03

465.44(C)

339.03

98.25P

PC 9P1

PC 9P1

98.25P

558.82(C)

564.3(C)

339.03

465.44(C)

339.03

98.25P

PC 9P1

PC 9P1

98.25P

558.82(C)

564.3(C)

339.03

465.44(C)

339.03

98.25P

PC 9P1

PC 9P1

98.25P

558.82(C)

564.3(C)

339.03

465.44(C)

339.03

98.25P

PC 9P1

PC 9P1