

6071A6

3502  
041-018-001-0114  
2.5050 AC

43A

3611  
041-018-001-0043  
4.6381 AC

43B

3611  
041-018-001-0070

47

48

041-018-001-0047  
5.9014 AC

3522  
041-018-001-0048  
6.4435 AC

49

3610  
041-018-001-0049  
5.3563 AC

6071A9

6071A11

161.88

400.42

995.83

50A

041-018-001-0082  
6.3805 AC

643.37

6071C2

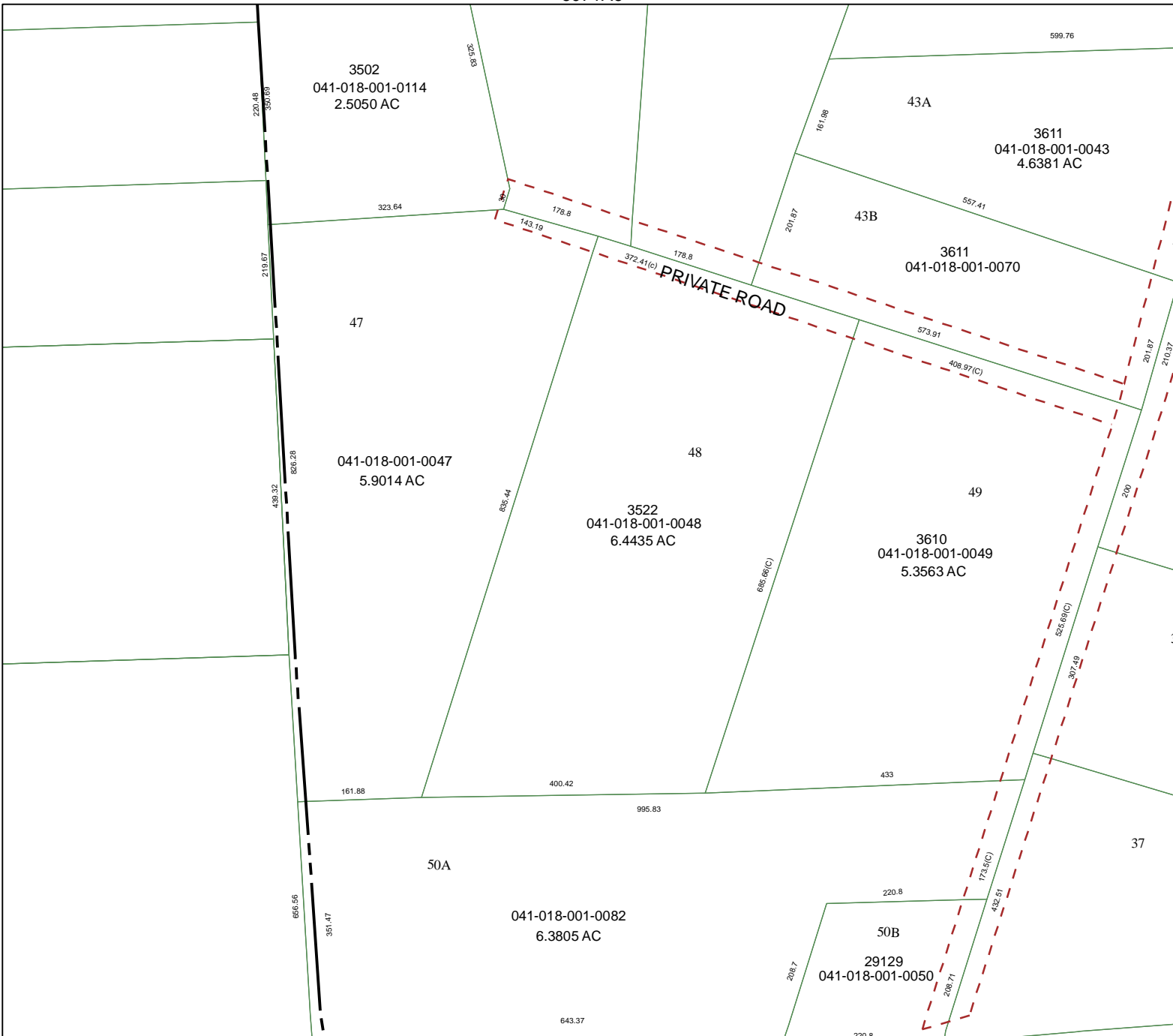
220.8

50B  
29129  
041-018-001-0050

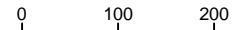
208.7

220.8

37



# Harris County Appraisal District

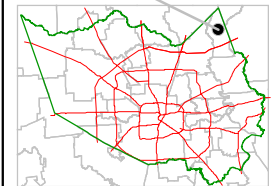


PUBLICATION DATE:  
1/20/2012

Geospatial or map data maintained by the Harris County Appraisal District is for informational purposes and may **not** have been prepared for or be suitable for legal, engineering, or surveying purposes. It does **not** represent an on-the-ground survey and only represents the approximate location of property boundaries.



## MAP LOCATION



# FACET 6071A

1	2	3	4
5	6	7	8
9	10	11	12