

6072C9

IA

Harris County Appraisal District



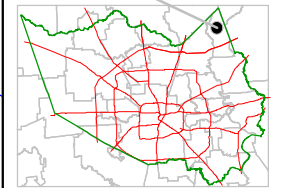
0 100 200

PUBLICATION DATE:
9/21/2011

Geospatial or map data maintained by the Harris County Appraisal District is for informational purposes and may not have been prepared for or be suitable for legal, engineering, or surveying purposes. It does not represent an on-the-ground survey and only represents the approximate location of property boundaries.



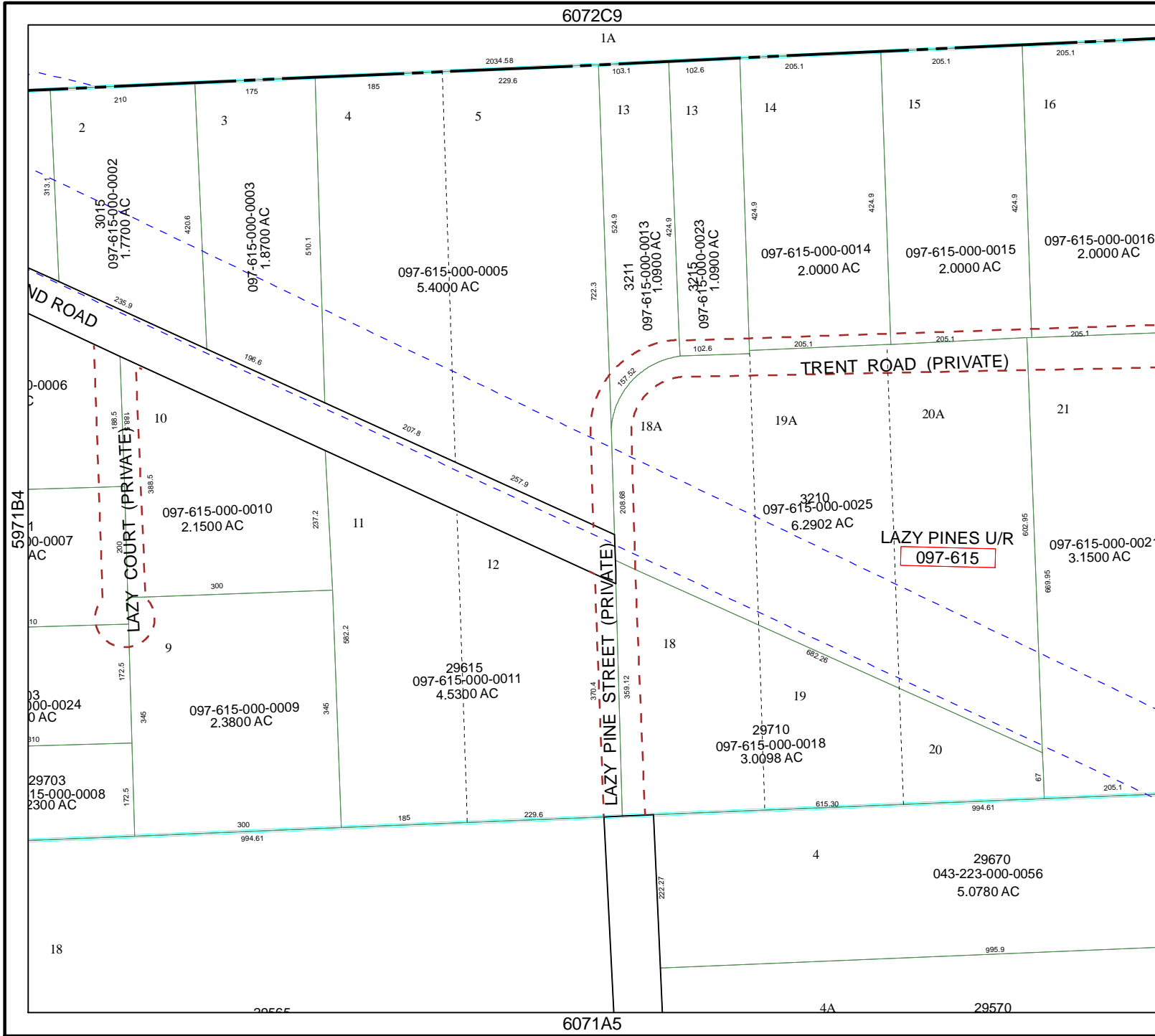
MAP LOCATION



FACET 6071A

1	2	3	4
5	6	7	8
9	10	11	12

6071A5



5971B4

6071A2

29703
15-000-0008
2300 AC

18

29565

6071A5

4A

29570