

6070C1

040-182-001-0012
5.4600 AC

8A-1A
224.75

8A-1

689.01
892.73

595.32
826.76

500

8A-2A

450.05

040-182-000
10.0000 AC

8A-2

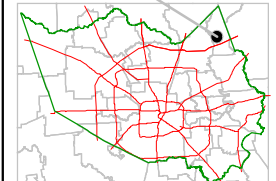


PUBLICATION DATE:
8/31/2011

Geospatial or map data maintained by the Harris County Appraisal District is for informational purposes and may **not** have been prepared for or be suitable for legal, engineering, or surveying purposes. It does **not** represent an on-the-ground survey and only represents the approximate location of property boundaries.



MAP LOCATION



**FACET
6070C**

1	2	3	4
5	6	7	8
9	10	11	12

6070C9

040-182-001-0012
5.4600 AC

8A-1A
224.75

8A-1

689.01
892.73

595.32
826.76

500

8A-2A

450.05

040-182-000
10.0000 AC

8A-2

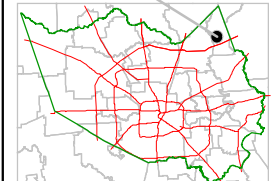


PUBLICATION DATE:
8/31/2011

Geospatial or map data maintained by the Harris County Appraisal District is for informational purposes and may **not** have been prepared for or be suitable for legal, engineering, or surveying purposes. It does **not** represent an on-the-ground survey and only represents the approximate location of property boundaries.



MAP LOCATION



**FACET
6070C**

1	2	3	4
5	6	7	8
9	10	11	12

6070C9

040-182-001-0012
5.4600 AC

8A-1A
224.75

8A-1

689.01
892.73

595.32
826.76

500

8A-2A

450.05

040-182-000
10.0000 AC

8A-2

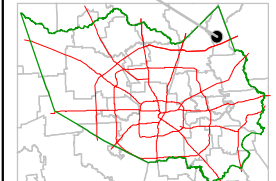


PUBLICATION DATE:
8/31/2011

Geospatial or map data maintained by the Harris County Appraisal District is for informational purposes and may **not** have been prepared for or be suitable for legal, engineering, or surveying purposes. It does **not** represent an on-the-ground survey and only represents the approximate location of property boundaries.



MAP LOCATION

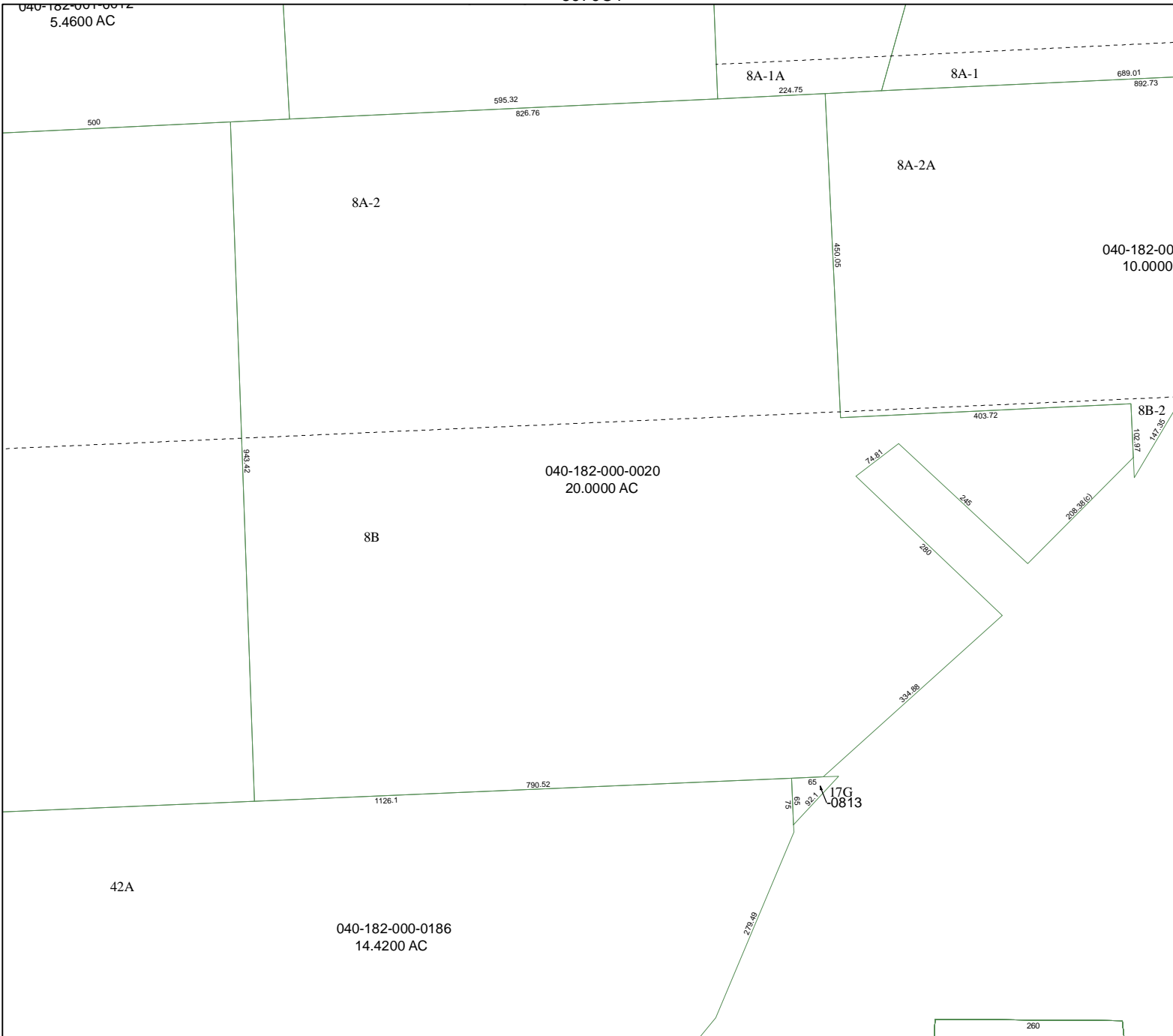


**FACET
6070C**

1	2	3	4
5	6	7	8
9	10	11	12

6070C9

5970D8



040-182-000-0020
20.0000 AC

040-182-000-0186
14.4200 AC

17G-0813

8B-2

74.91

245

260

334.98

208.38(C)

403.72

46.70

117.36

790.52

1126.1

57

59

65

92.1

278.49

260