

6069B11

19

Harris County Appraisal District



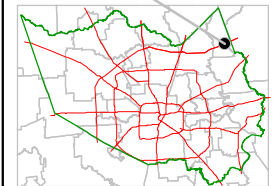
0 100 200

PUBLICATION DATE:
12/1/2011

Geospatial or map data maintained by the Harris County Appraisal District is for informational purposes and may **not** have been prepared for or be suitable for legal, engineering, or surveying purposes. It does **not** represent an on-the-ground survey and only represents the approximate location of property boundaries.



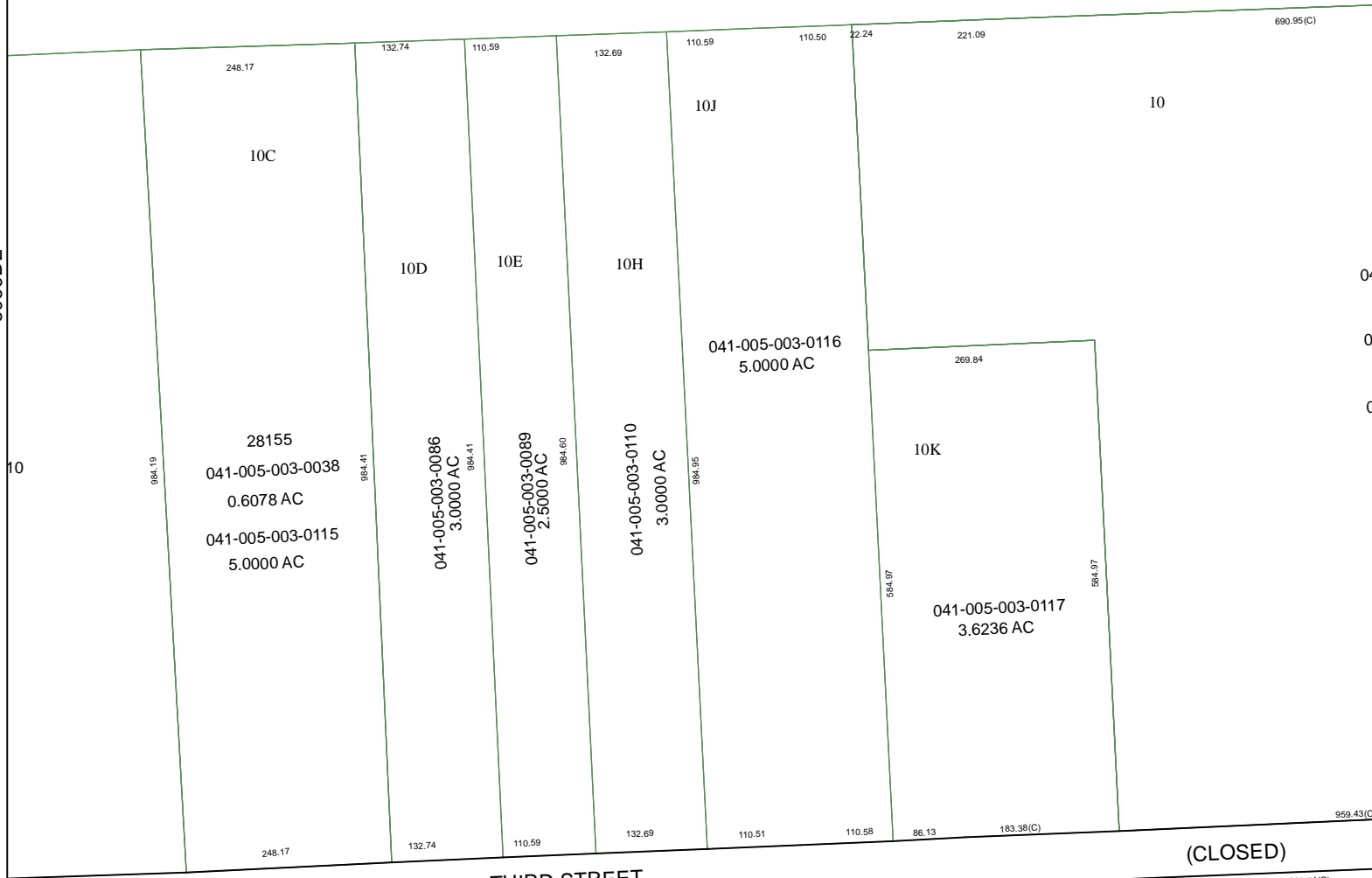
MAP LOCATION



FACET 6069D

1	2	3	4
5	6	7	8
9	10	11	12

6069D2



10

6069D4

THIRD STREET

6069D7

(CLOSED)

683.54(C)