

NEWPORT
108-001
SEC. 10

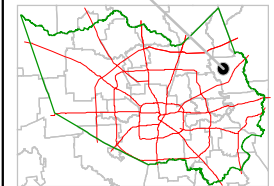
Harris County Appraisal District



0 100 200
PUBLICATION DATE:
8/15/2011

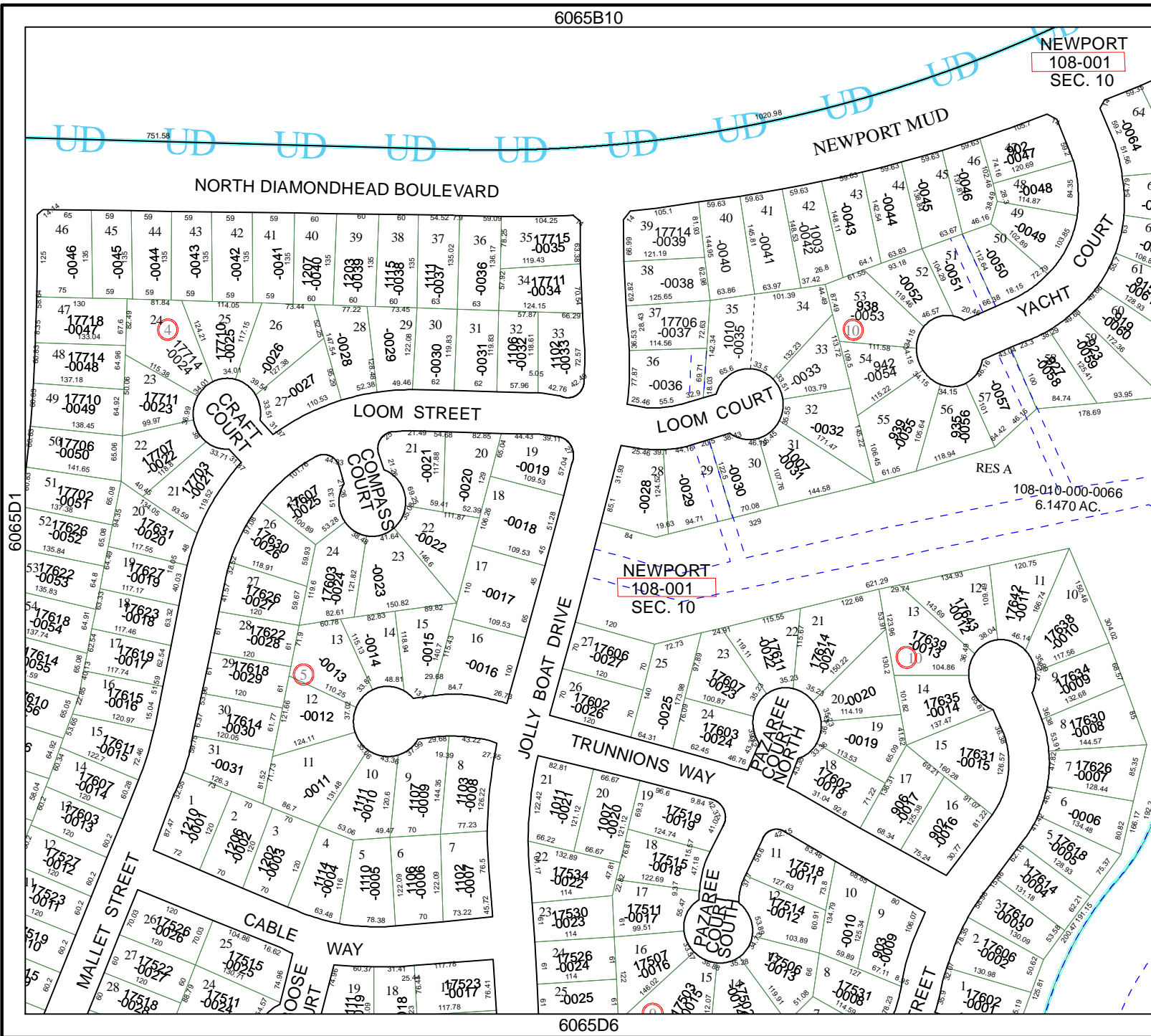
Geospatial or map data maintained by the Harris County Appraisal District is for informational purposes and may not have been prepared for or be suitable for legal, engineering, or surveying purposes. It does not represent an on-the-ground survey and only represents the approximate location of property boundaries.

MAP LOCATION



FACET 6065D

1	2	3	4
5	6	7	8
9	10	11	12



6065D1

6065D3