

6064A7  
SEC. 4

6064C3

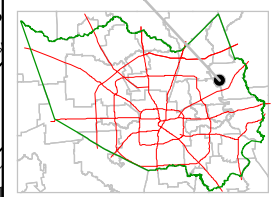
# Harris County Appraisal District



0 100 200  
PUBLICATION DATE:  
12/13/2011

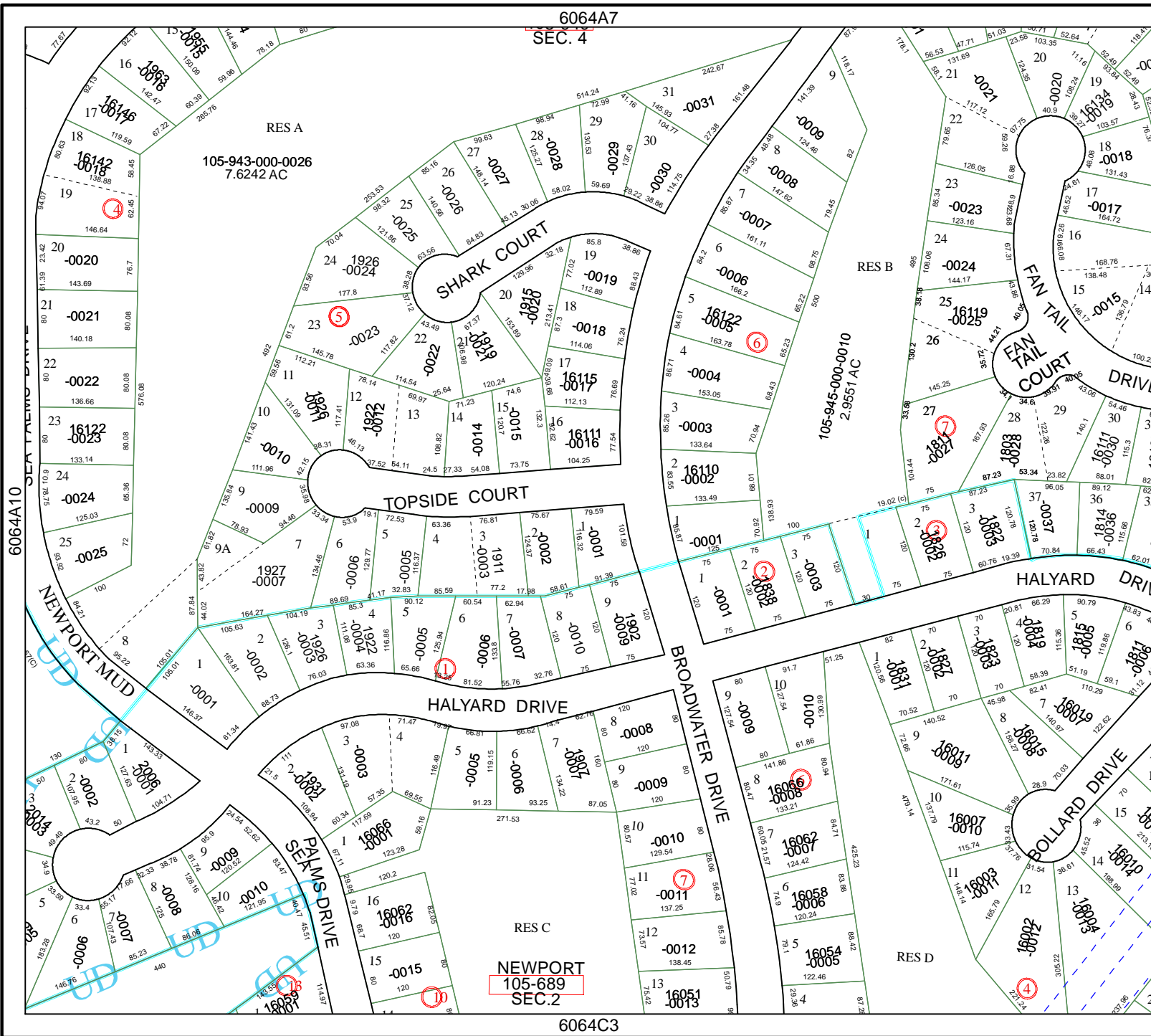
Geospatial or map data maintained by the Harris County Appraisal District is for informational purposes and may not have been prepared for or be suitable for legal, engineering, or surveying purposes. It does not represent an on-the-ground survey and only represents the approximate location of property boundaries.

### MAP LOCATION



## FACET 6064A

1	2	3	4
5	6	7	8
9	10	11	12



NEWPORT  
105-689  
SEC.2