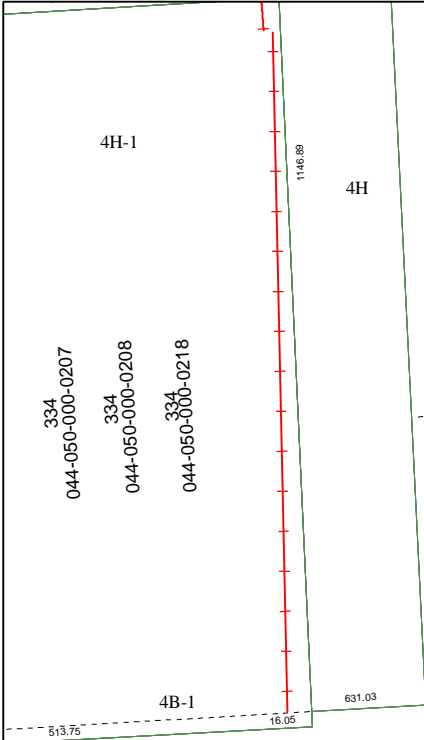


6056C11

6055A2



4D

13

3256.15

4B

6055A7

Harris County Appraisal District



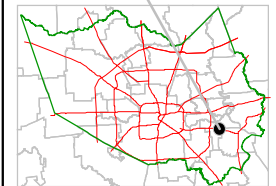
PUBLICATION DATE:
8/15/2011

Geospatial or map data maintained by the Harris County Appraisal District is for informational purposes and may **not** have been prepared for or be suitable for legal, engineering, or surveying purposes. It does **not** represent an on-the-ground survey and only represents the approximate location of property boundaries.



6055A4

MAP LOCATION



FACET 6055A

1	2	3	4
5	6	7	8
9	10	11	12