

Harris County Appraisal District

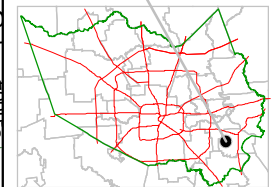


0 100 200

PUBLICATION DATE:
8/15/2011

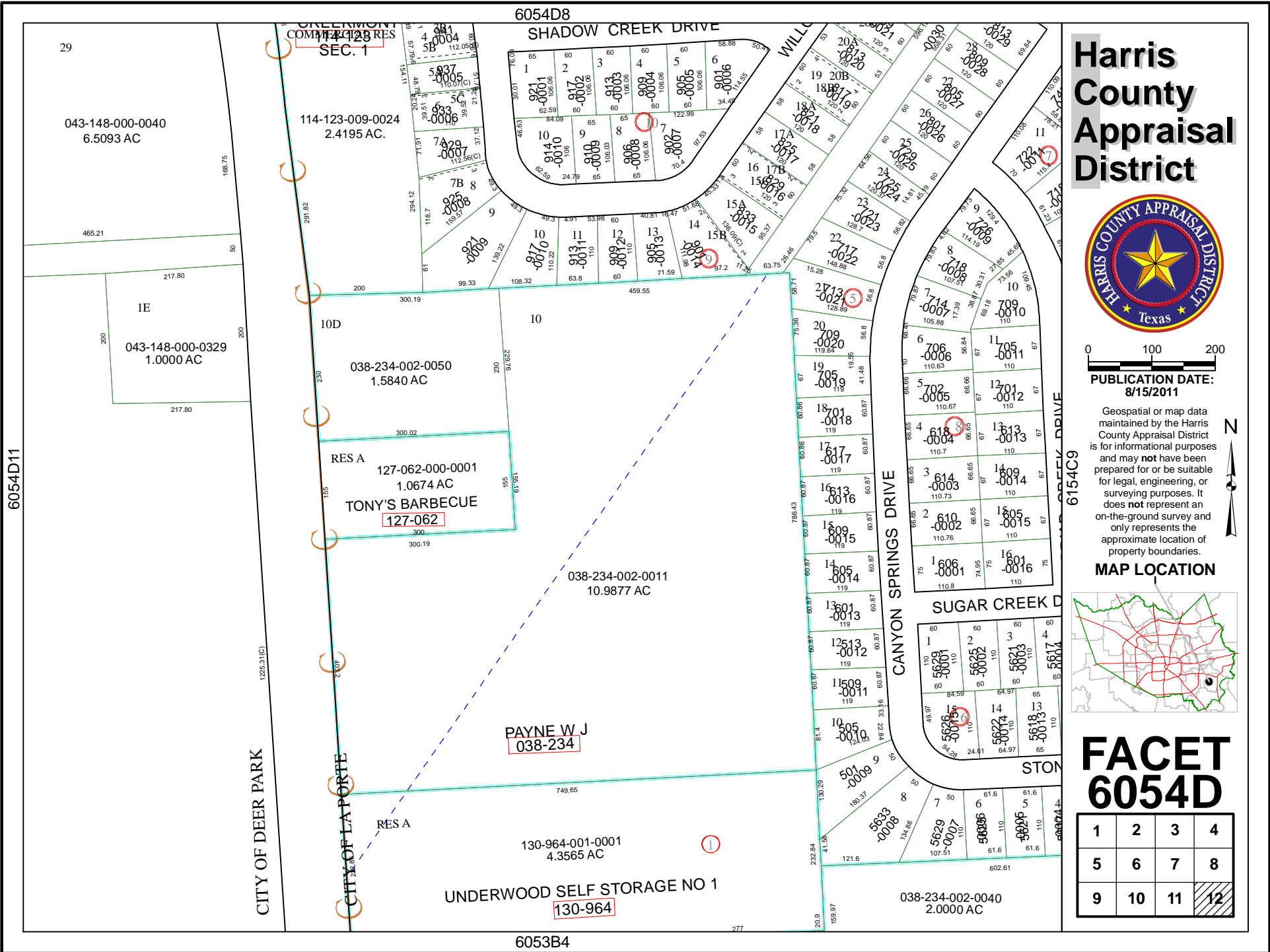
Geospatial or map data maintained by the Harris County Appraisal District is for informational purposes and may **not** be suitable for legal, engineering, or surveying purposes. It does **not** represent an on-the-ground survey and only represents the approximate location of property boundaries.

MAP LOCATION



FACET 6054D

1	2	3	4
5	6	7	8
9	10	11	12



6054D11

6054D8

6053B4

CITY OF DEER PARK

CITY OF LA PORTE

6154C9

277