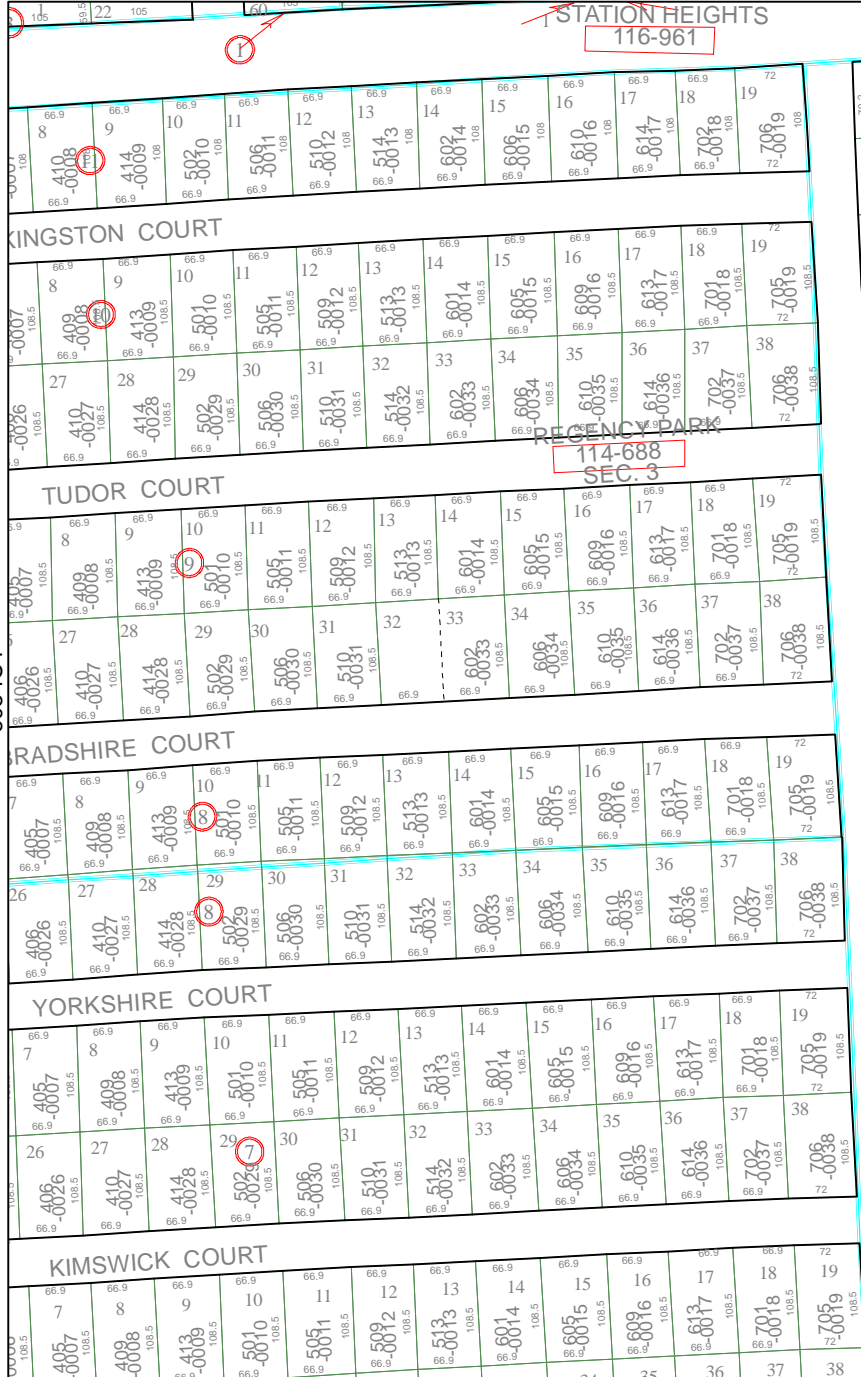


6054A10

STATION HEIGHTS
116-961

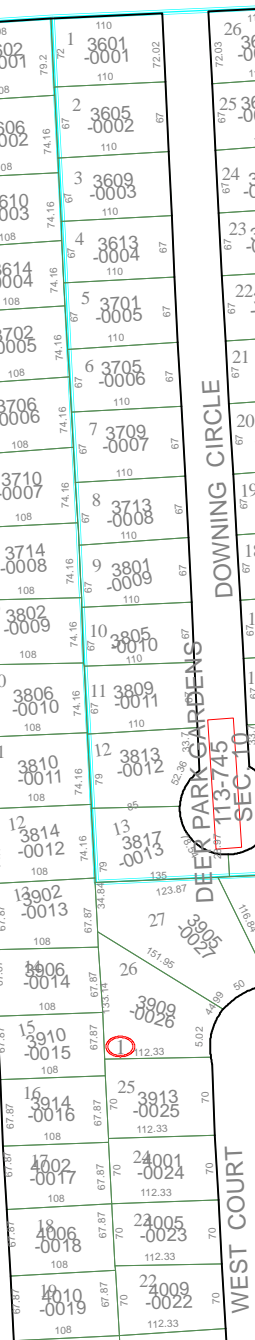
6054C1



114-688
SEC. 3

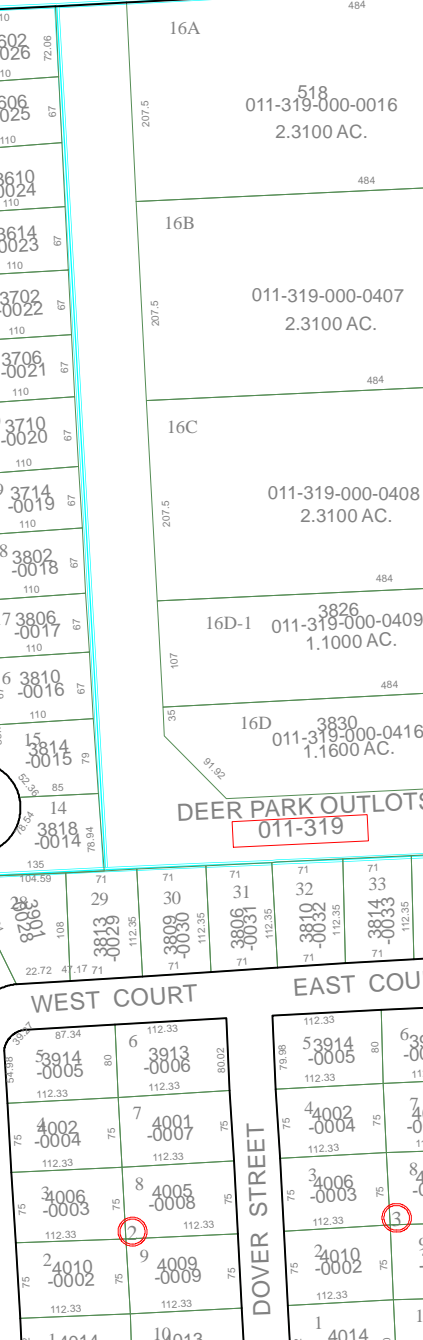
WINDSOR DRIVE

6054C6



113-745
SEC. 3

DOWNING CIRCLE



011-319

6054C3

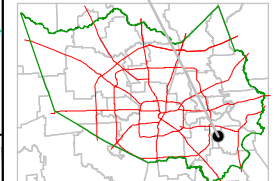
Harris County Appraisal District



0 100 200
PUBLICATION DATE:
8/15/2011

Geospatial or map data maintained by the Harris County Appraisal District is for informational purposes and may not be suitable for legal, engineering, or surveying purposes. It does not represent an on-the-ground survey and only represents the approximate location of property boundaries.

MAP LOCATION



FACET 6054C

| | | | |
|---|----|----|----|
| 1 | 2 | 3 | 4 |
| 5 | 6 | 7 | 8 |
| 9 | 10 | 11 | 12 |