

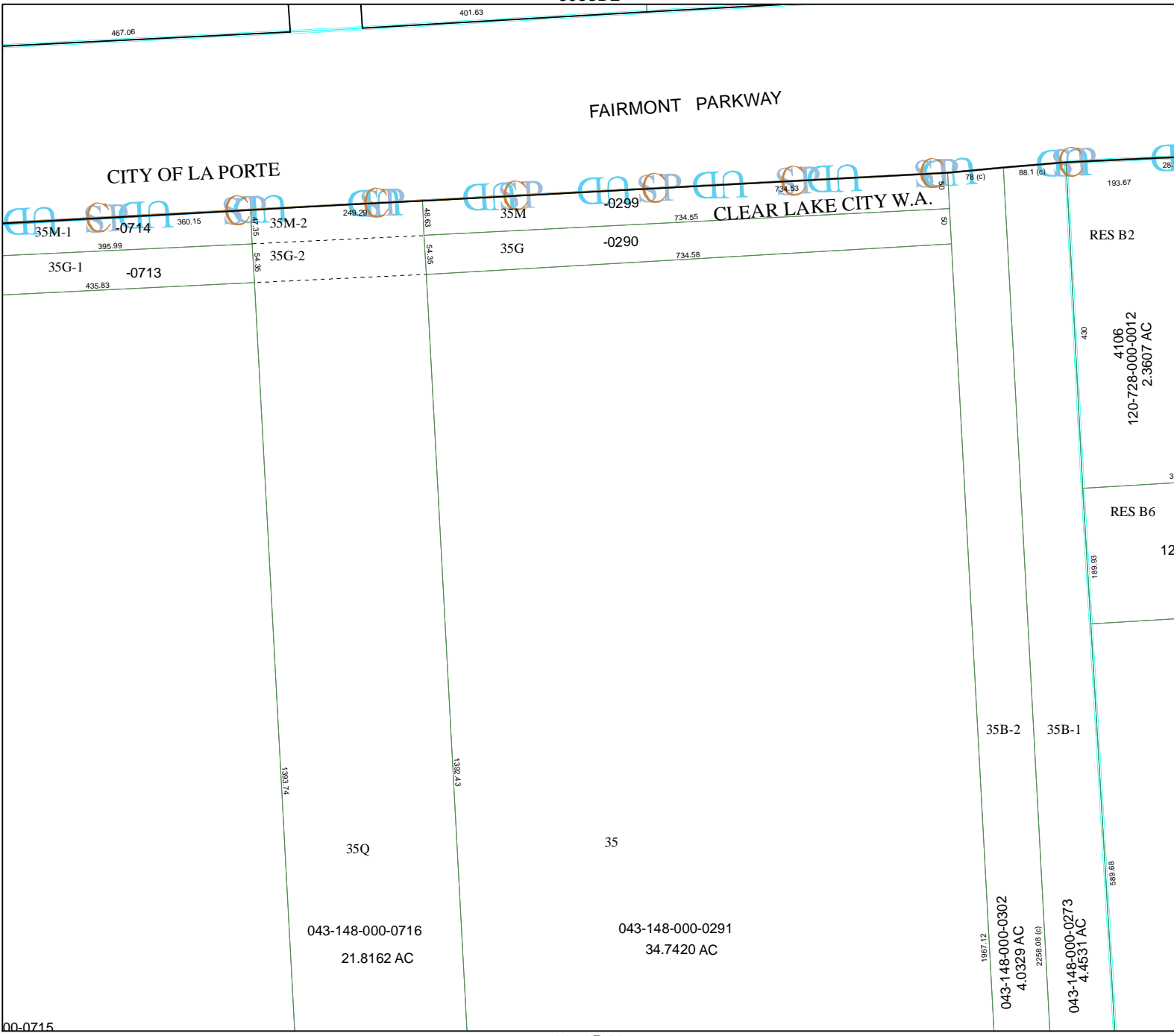
6053D2

FAIRMONT PARKWAY

CITY OF LA PORTE

CLEAR LAKE CITY W.A.

6053D5



# Harris County Appraisal District

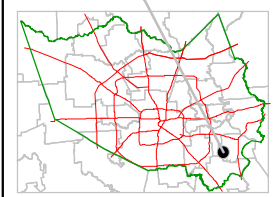


PUBLICATION DATE:  
9/28/2011

Geospatial or map data maintained by the Harris County Appraisal District is for informational purposes and may **not** have been prepared for or be suitable for legal, engineering, or surveying purposes. It does **not** represent an on-the-ground survey and only represents the approximate location of property boundaries.



### MAP LOCATION



## FACET 6053D

1	2	3	4
5	6	7	8
9	10	11	12

6053D10

00-0715