

# Harris County Appraisal District

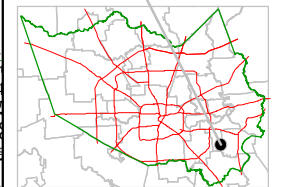


0 100 200

PUBLICATION DATE:  
8/15/2011

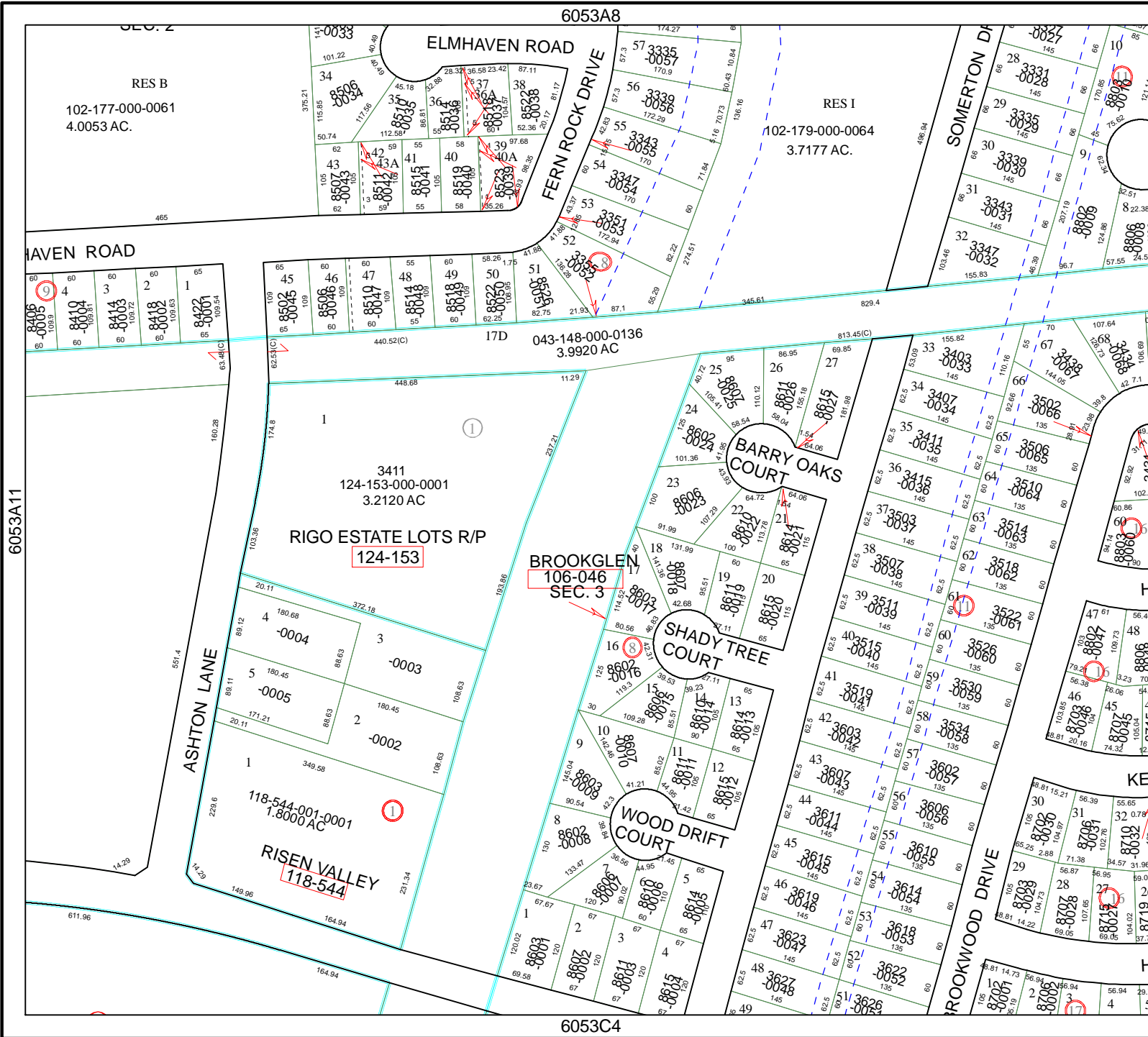
Geospatial or map data maintained by the Harris County Appraisal District is for informational purposes and may not be prepared for or be suitable for legal, engineering, or surveying purposes. It does not represent an on-the-ground survey and only represents the approximate location of property boundaries.

MAP LOCATION



## FACET 6053A

1	2	3	4
5	6	7	8
9	10	11	12



6053B9

6053A11

6053A8

6053C4

RES B  
102-177-000-0061  
4.0053 AC.

RES I  
102-179-000-0064  
3.7177 AC.

3411  
124-153-000-001  
3.2120 AC  
124-153

106-046  
SEC. 3

118-544-001-0001  
1.8000 AC  
118-544

1	2	3	4
5	6	7	8
9	10	11	12