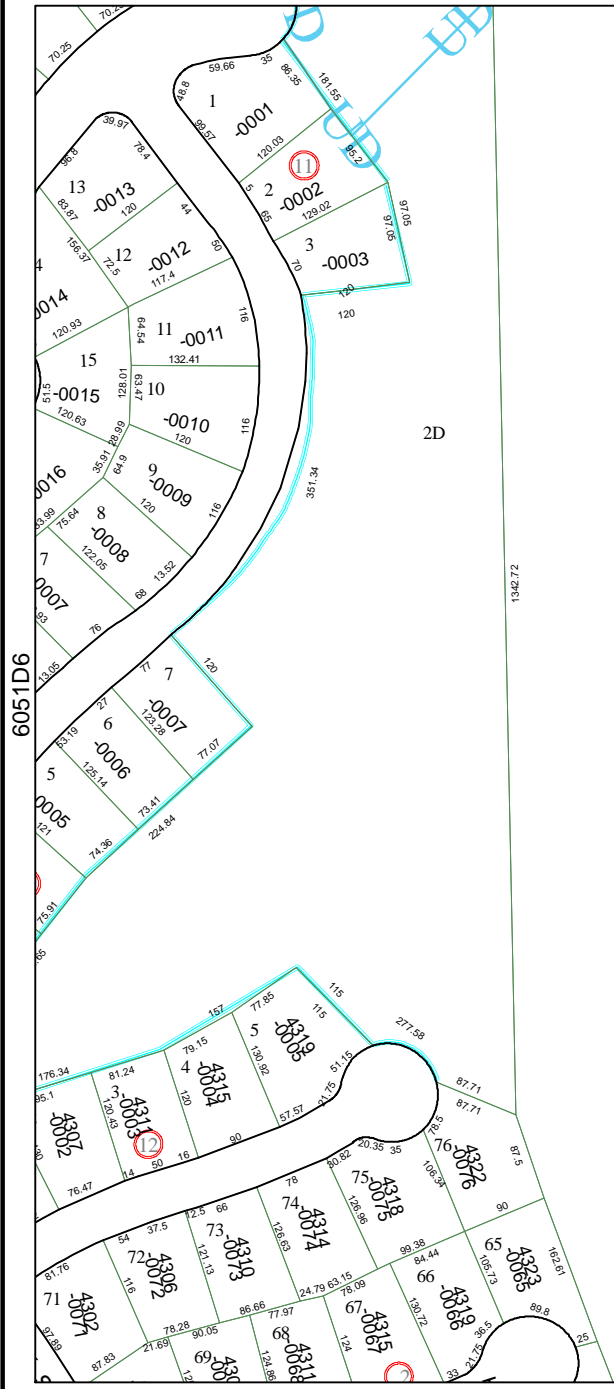


6051D3



6051D11

Harris County Appraisal District

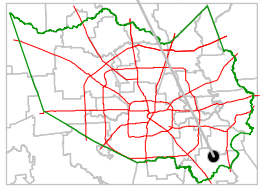


0 100 200
PUBLICATION DATE:
 8/15/2011

Geospatial or map data maintained by the Harris County Appraisal District is for informational purposes and may **not** have been prepared for or be suitable for legal, engineering, or surveying purposes. It does **not** represent an on-the-ground survey and only represents the approximate location of property boundaries.



MAP LOCATION



FACET 6051D

1	2	3	4
5	6	7	8
9	10	11	12

6051D8

959.66(C)

2D

3

041-020-000-0010
82.9500 AC.