

6051D6

6050B2

Harris County Appraisal District

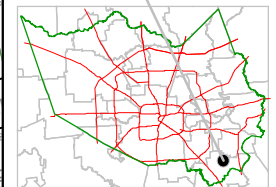


0 100 200

PUBLICATION DATE:
10/1/2011

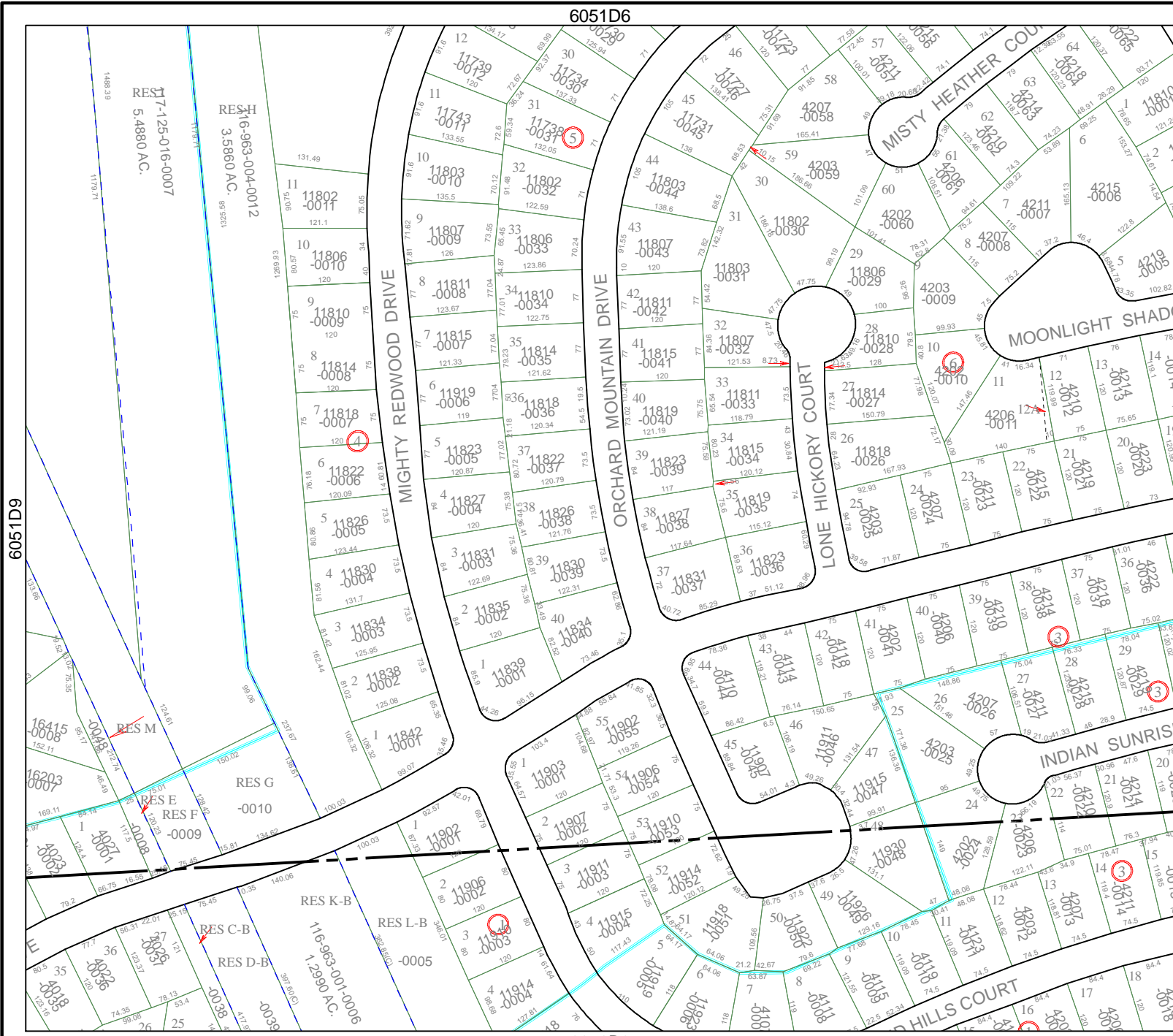
Geospatial or map data maintained by the Harris County Appraisal District is for informational purposes and may not be suitable for legal, engineering, or surveying purposes. It does not represent an on-the-ground survey and only represents the approximate location of property boundaries.

MAP LOCATION



FACET 6051D

1	2	3	4
5	6	7	8
9	10	11	12



6051D5

6051D1

