

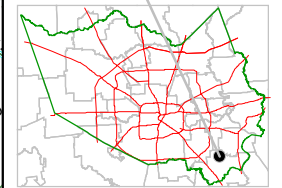
Harris County Appraisal District



0 100 200
PUBLICATION DATE:
 12/15/2011

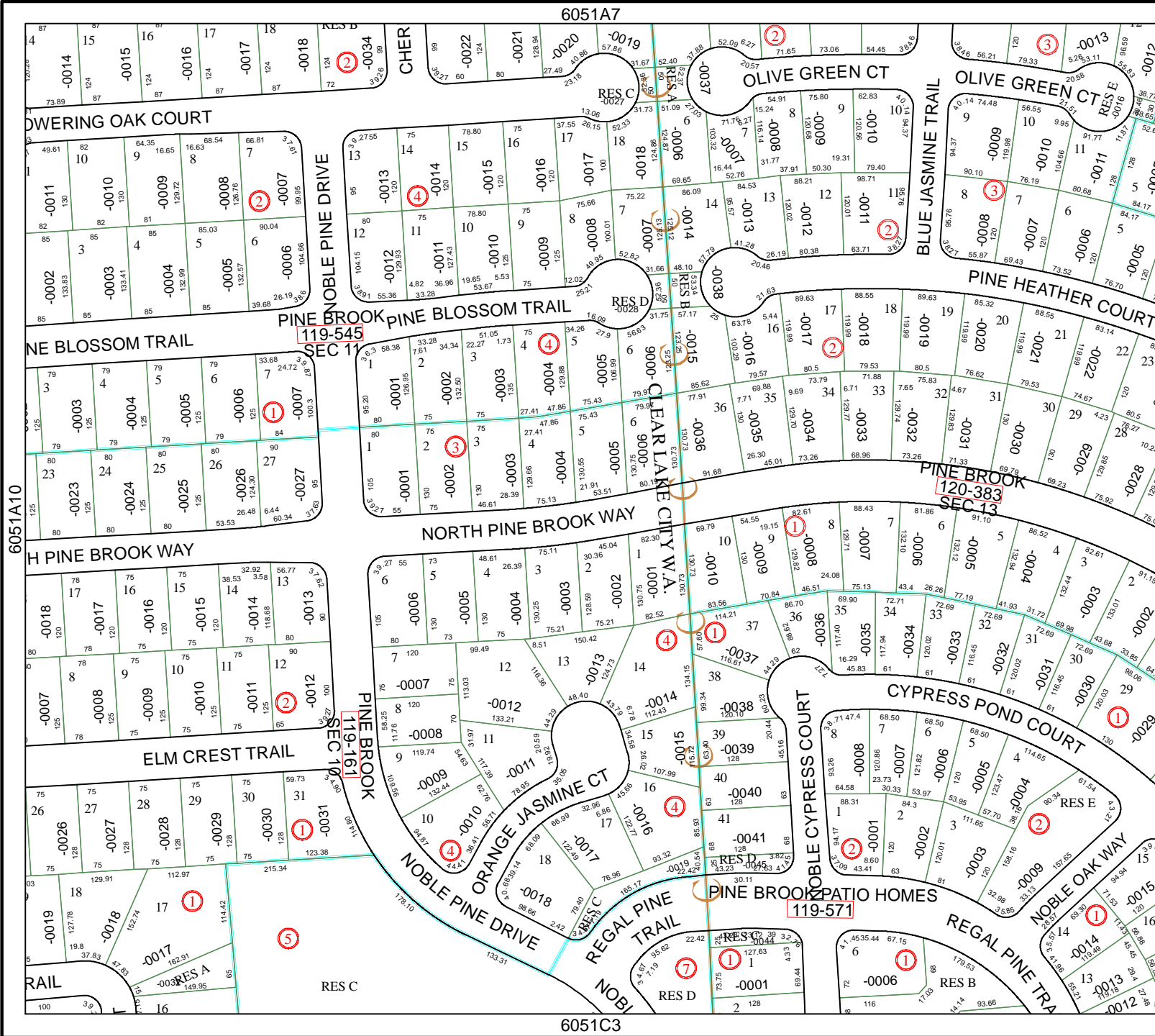
Geospatial or map data maintained by the Harris County Appraisal District is for informational purposes and may not be prepared for or be suitable for legal, engineering, or surveying purposes. It does not represent an on-the-ground survey and only represents the approximate location of property boundaries.

MAP LOCATION



FACET 6051A

1	2	3	4
5	6	7	8
9	10	11	12



6051A10

6051A7

6051A12

6051C3

