

6050D3

6050D6

Harris County Appraisal District



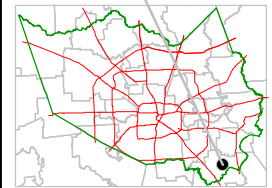
0 100 200

PUBLICATION DATE:
8/26/2011

Geospatial or map data maintained by the Harris County Appraisal District is for informational purposes and may not have been prepared for or be suitable for legal, engineering, or surveying purposes. It does not represent an on-the-ground survey and only represents the approximate location of property boundaries.

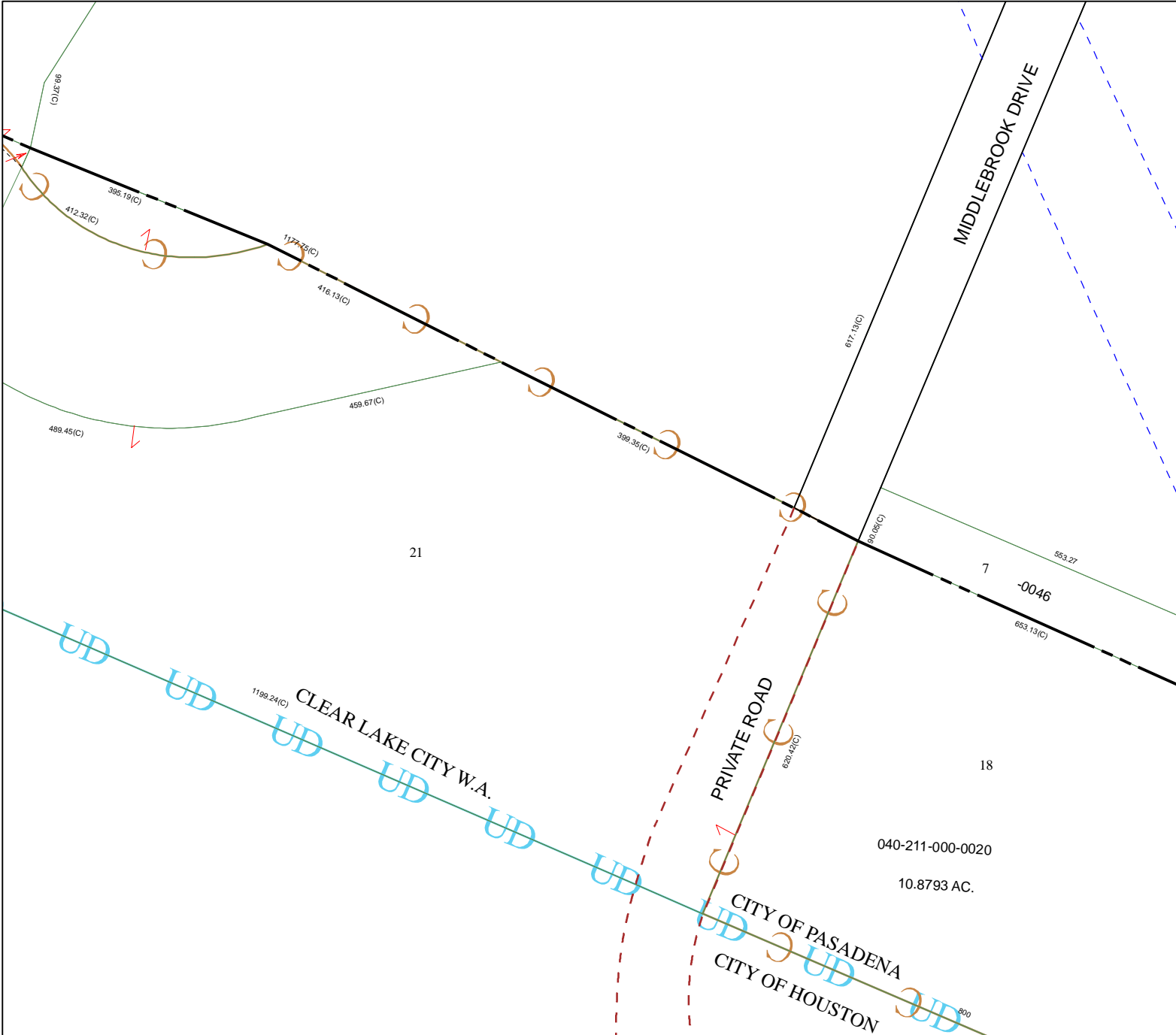


MAP LOCATION



FACET 6050D

1	2	3	4
5	6	7	8
9	10	11	12



6050D11

6050D8