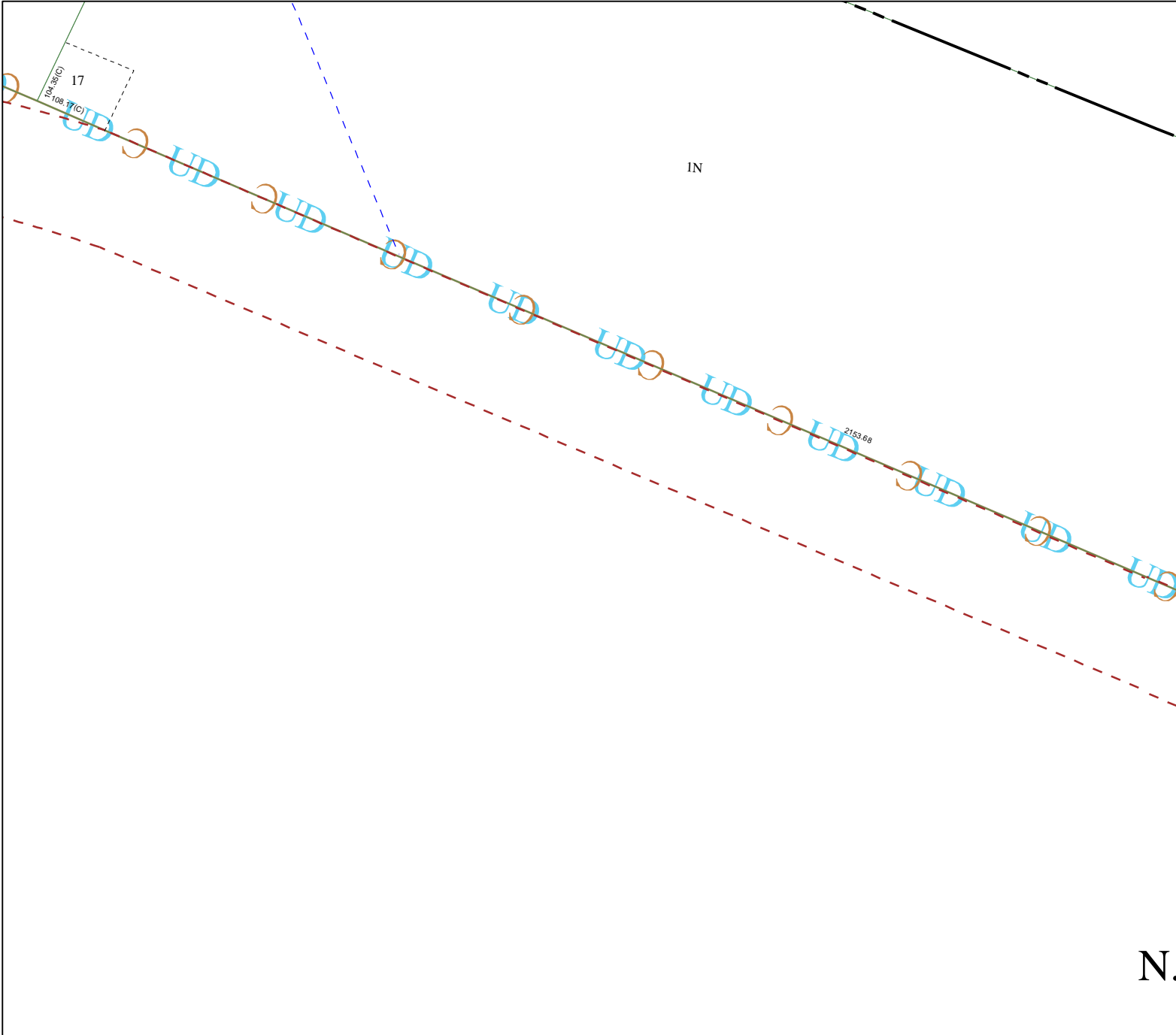


6050D8

6050D11



Harris County Appraisal District



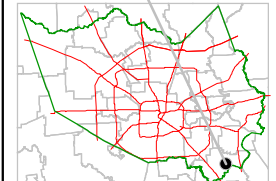
0 100 200

PUBLICATION DATE:
7/29/2011

Geospatial or map data maintained by the Harris County Appraisal District is for informational purposes and may **not** have been prepared for or be suitable for legal, engineering, or surveying purposes. It does **not** represent an on-the-ground survey and only represents the approximate location of property boundaries.



MAP LOCATION



FACET 6050D

1	2	3	4
5	6	7	8
9	10	11	12

N.

6049B4