

6050A12

IJ

RES A

116-251-001-0062
10.2810 AC.

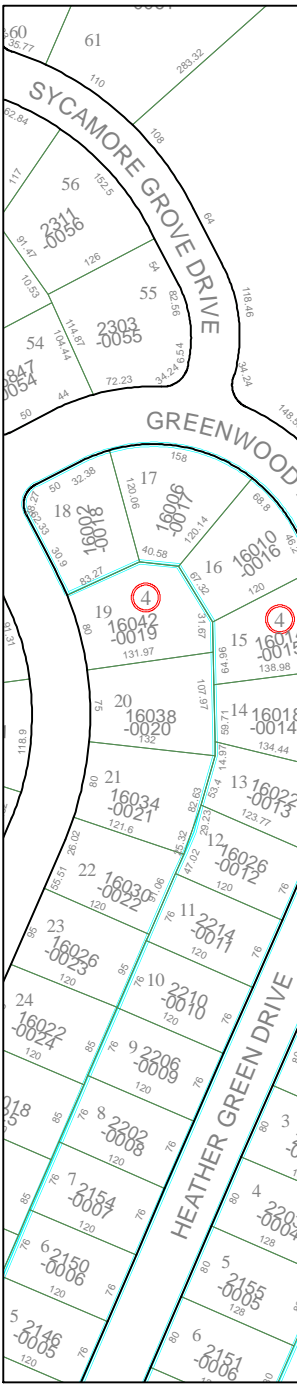
324.60(C)

883.21

346.7

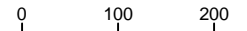
IX

900
040-211-000-0040
42.4780 AC.



6050C3

Harris County Appraisal District

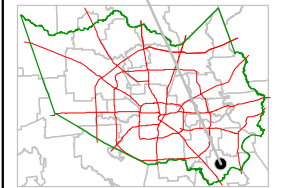


PUBLICATION DATE:
8/26/2011

Geospatial or map data maintained by the Harris County Appraisal District is for informational purposes and may **not** have been prepared for or be suitable for legal, engineering, or surveying purposes. It does **not** represent an on-the-ground survey and only represents the approximate location of property boundaries.



MAP LOCATION



FACET 6050C

1	2	3	4
5	6	7	8
9	10	11	12

6050C8

6050D1