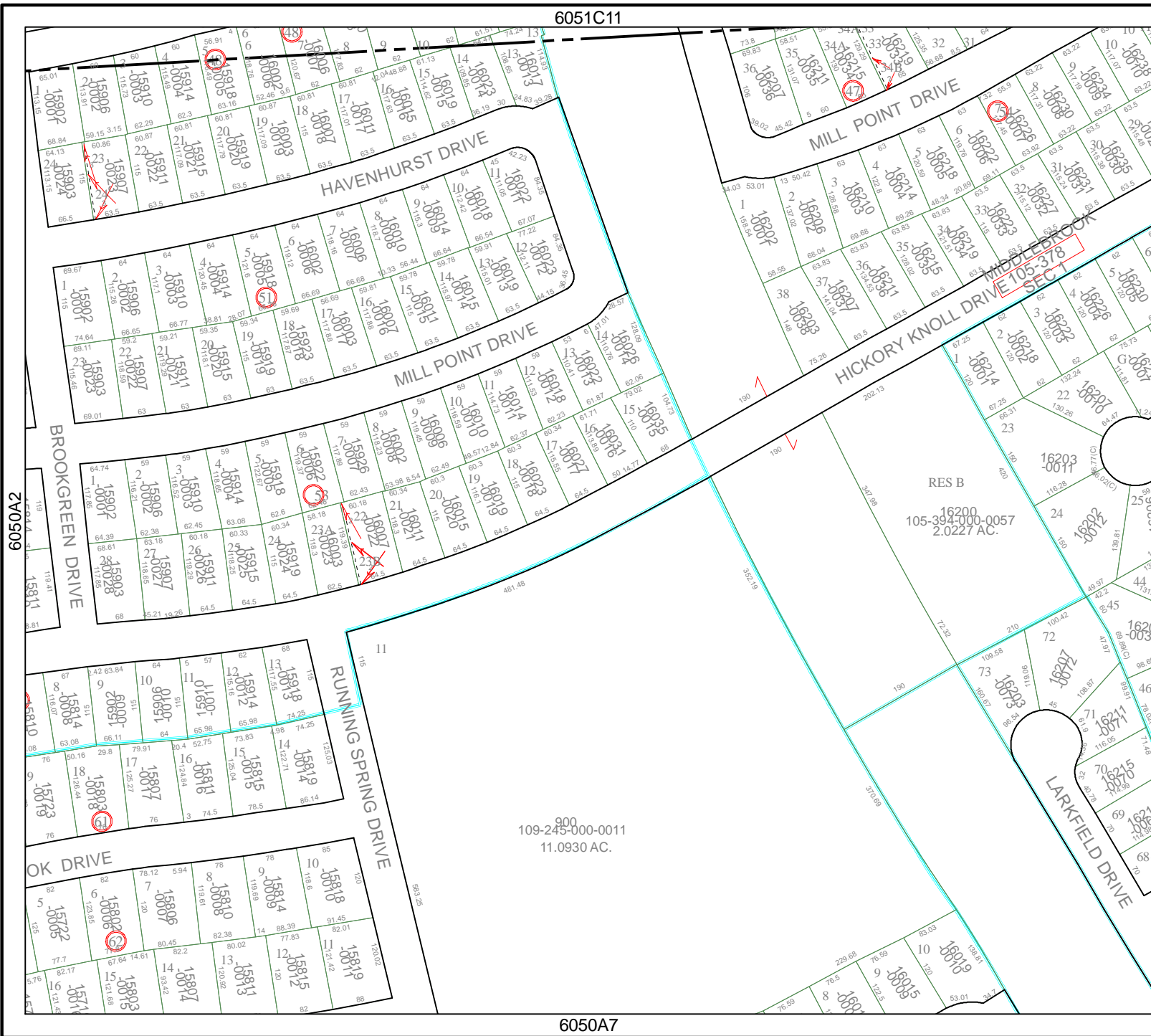


6051C11



6050A2

6050A7

Harris County Appraisal District

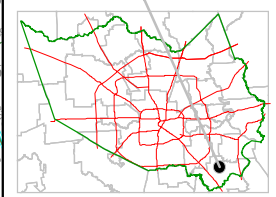


0 100 200
PUBLICATION DATE:
 8/30/2011

Geospatial or map data maintained by the Harris County Appraisal District is for informational purposes and may not be suitable for legal, engineering, or surveying purposes. It does not represent an on-the-ground survey and only represents the approximate location of property boundaries.



MAP LOCATION



FACET 6050A

1	2	3	4
5	6	7	8
9	10	11	12

6050A4

RES B
 16200
 105-394-000-0057
 2.0227 AC.

900
 109-245-000-0011
 11.0930 AC.